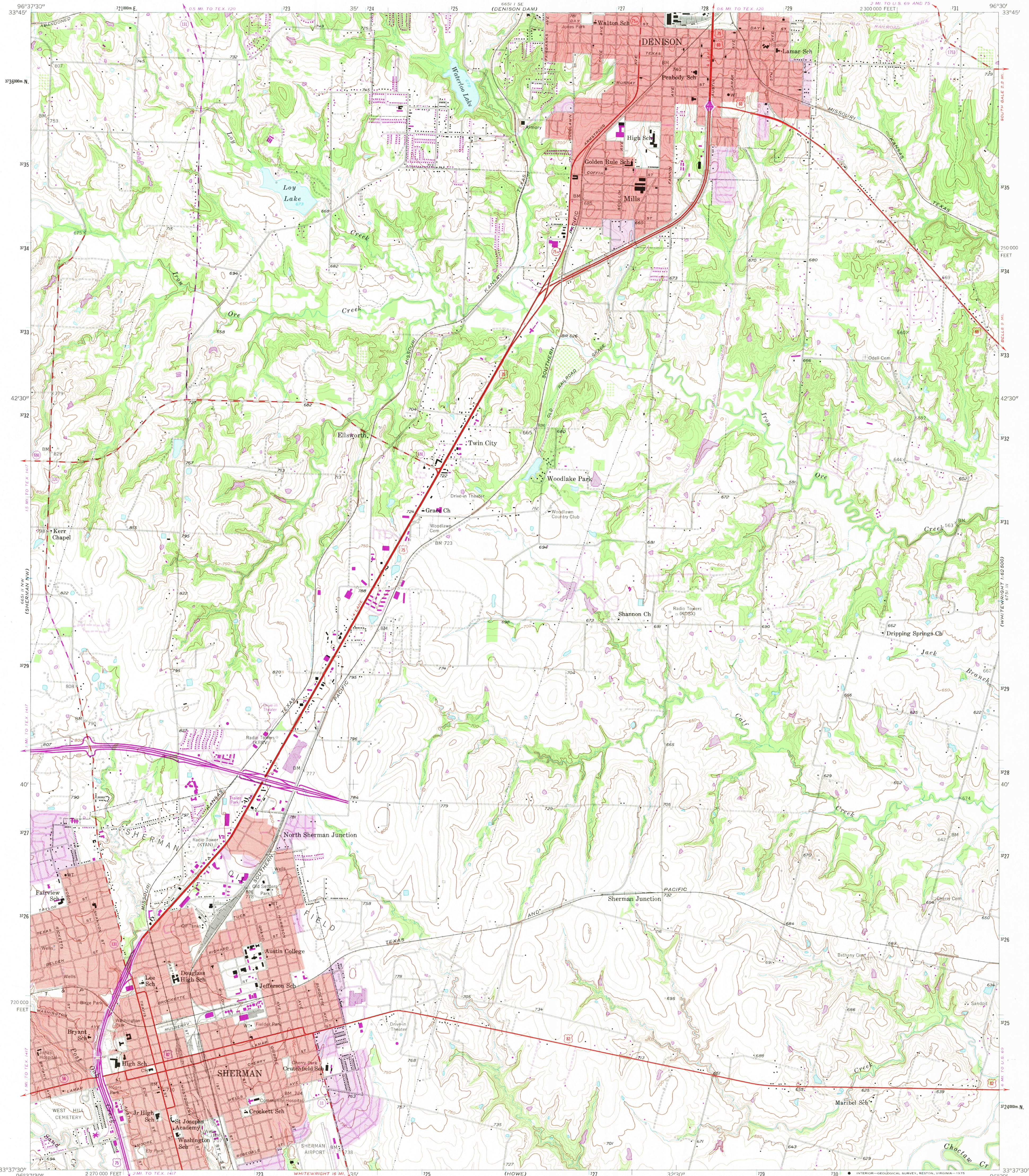


UNITED STATES
DEPARTMENT OF THE INTERIOR
GEOLOGICAL SURVEY

SHERMAN QUADRANGLE
TEXAS-GRAYSON CO.
7.5 MINUTE SERIES (TOPOGRAPHIC)
NE 1/4 SHERMAN 15' QUADRANGLE



Mapped, edited, and published by the Geological Survey

Control by USGS and NOS/NOAA

Topography from aerial photographs by multiplex methods

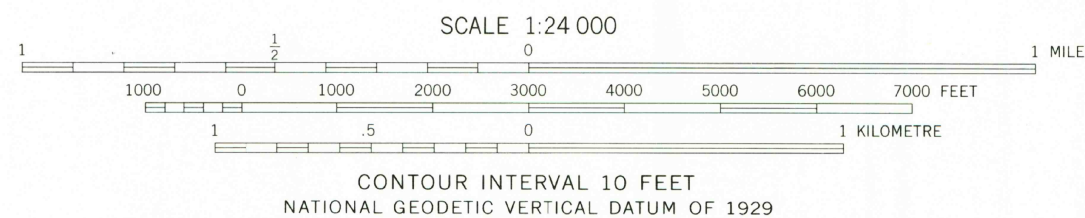
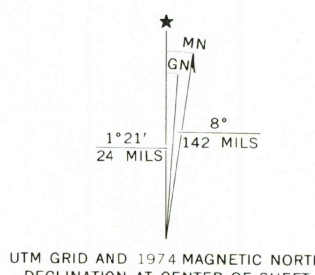
Aerial photographs taken 1955-1956. Field check 1958

Polyconic projection. 1927 North American datum
10,000-foot grid based on Texas coordinate system, north central zone
1000-metre Universal Transverse Mercator grid ticks,
zone 14, shown in blue

Red tint indicates areas in which only
landmark buildings are shown

Revisions shown in purple compiled from aerial photographs
taken 1974. This information not field checked

Purple tint indicates extension of urban areas



QUADRANGLE LOCATION

ROAD CLASSIFICATION	
Primary highway, hard surface	Light-duty road, hard or improved surface
Secondary highway, hard surface	Unimproved road
Interstate Route	U. S. Route
	State Route

USGS
HISTORICAL FILE
TOPOGRAPHIC DIVISION

SHERMAN, TEX.
NE 1/4 SHERMAN 15' QUADRANGLE
N 3337.5 - W 9630.7 / 7.5

1958
PHOTOREVISED 1974
AMS 6651 II NE-SERIES W82

JUN 06 1975
2975