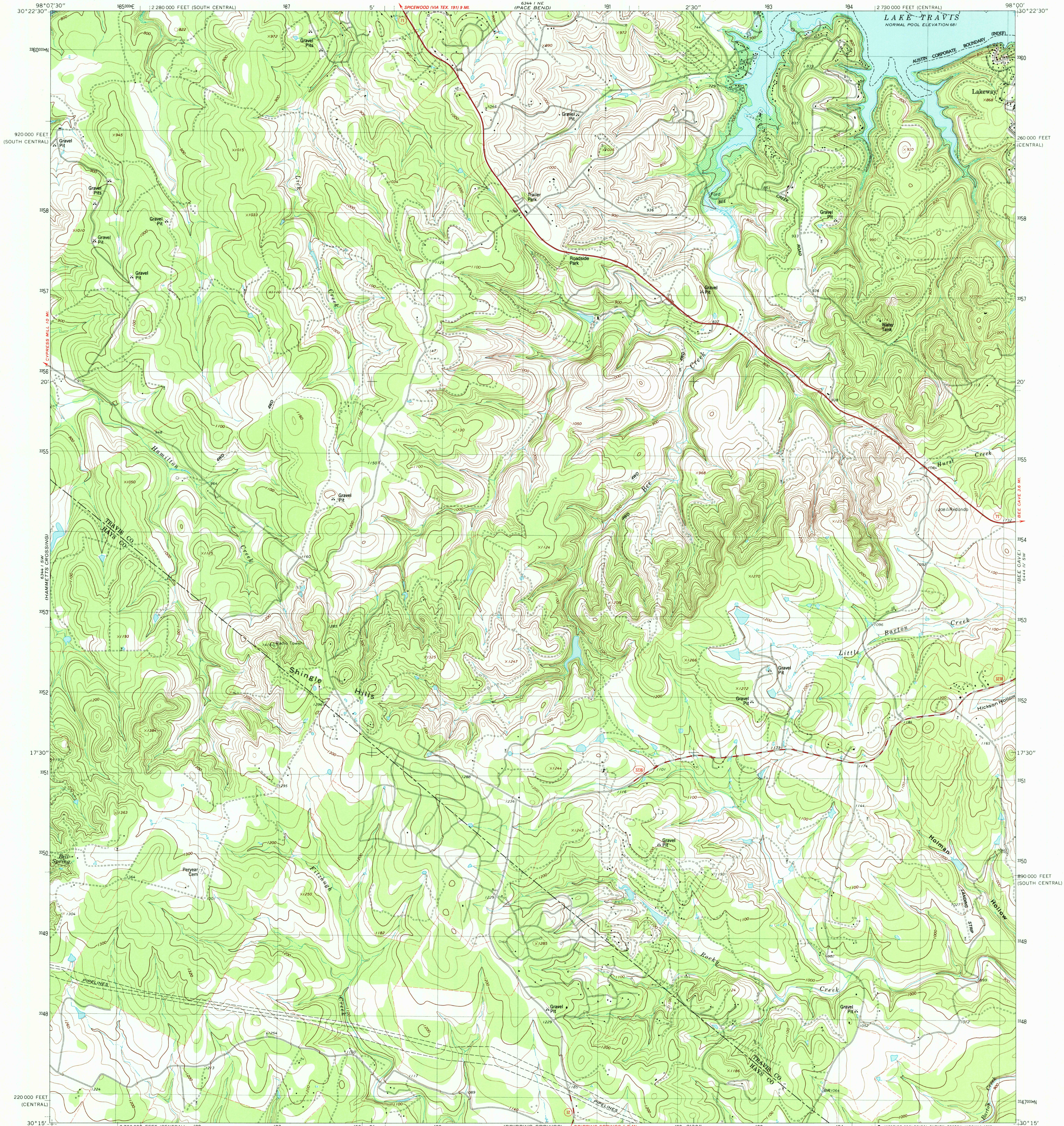
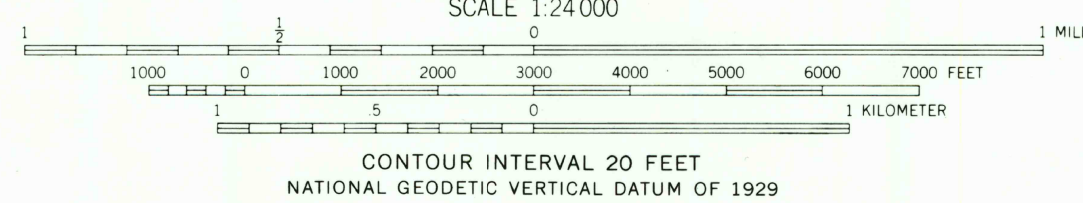
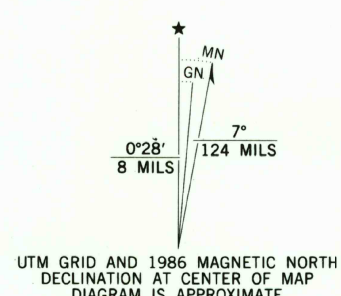


UNITED STATES
DEPARTMENT OF THE INTERIOR
GEOLOGICAL SURVEY

SHINGLE HILLS QUADRANGLE
TEXAS
7.5 MINUTE SERIES (TOPOGRAPHIC)
SE 1/4 SPICEWOOD 15' QUADRANGLE



Mapped, edited, and published by the Geological Survey
Revised in cooperation with the Texas Water Development Board
Control by USGS and NOS/NOAA
Topography by photogrammetric methods from aerial photographs
taken 1967. Field checked 1968. Revised from aerial photographs
taken 1985. Field checked 1986. Map edited 1986
Projection: Texas coordinate system, central zone
(Lambert conformal conic)
10,000-foot grid ticks based on Texas coordinate system,
central and south central zones
1000-meter Universal Transverse Mercator grid, zone 14
1927 North American Datum
To place on the predicted North American Datum 1983
move the projection lines 1.8 meters south and
28 meters east as shown by dashed corner ticks
Fine red dashed lines indicate selected fence lines



ROAD CLASSIFICATION

Primary highway, hard surface	Light-duty road, hard or improved surface
Secondary highway, hard surface	Unimproved road
Interstate Route	U.S. Route
	State Route



THIS MAP COMPLIES WITH NATIONAL MAP ACCURACY STANDARDS
FOR SALE BY U.S. GEOLOGICAL SURVEY, DENVER, COLORADO 80225, OR RESTON, VIRGINIA 22092
A FOLDER DESCRIBING TOPOGRAPHIC MAPS AND SYMBOLS IS AVAILABLE ON REQUEST

3098-141

SHINGLE HILLS, TEX.
SE 1/4 SPICEWOOD 15' QUADRANGLE
30098-C1-TF-024
1986

DMA 6344 1 SE-SERIES Y882