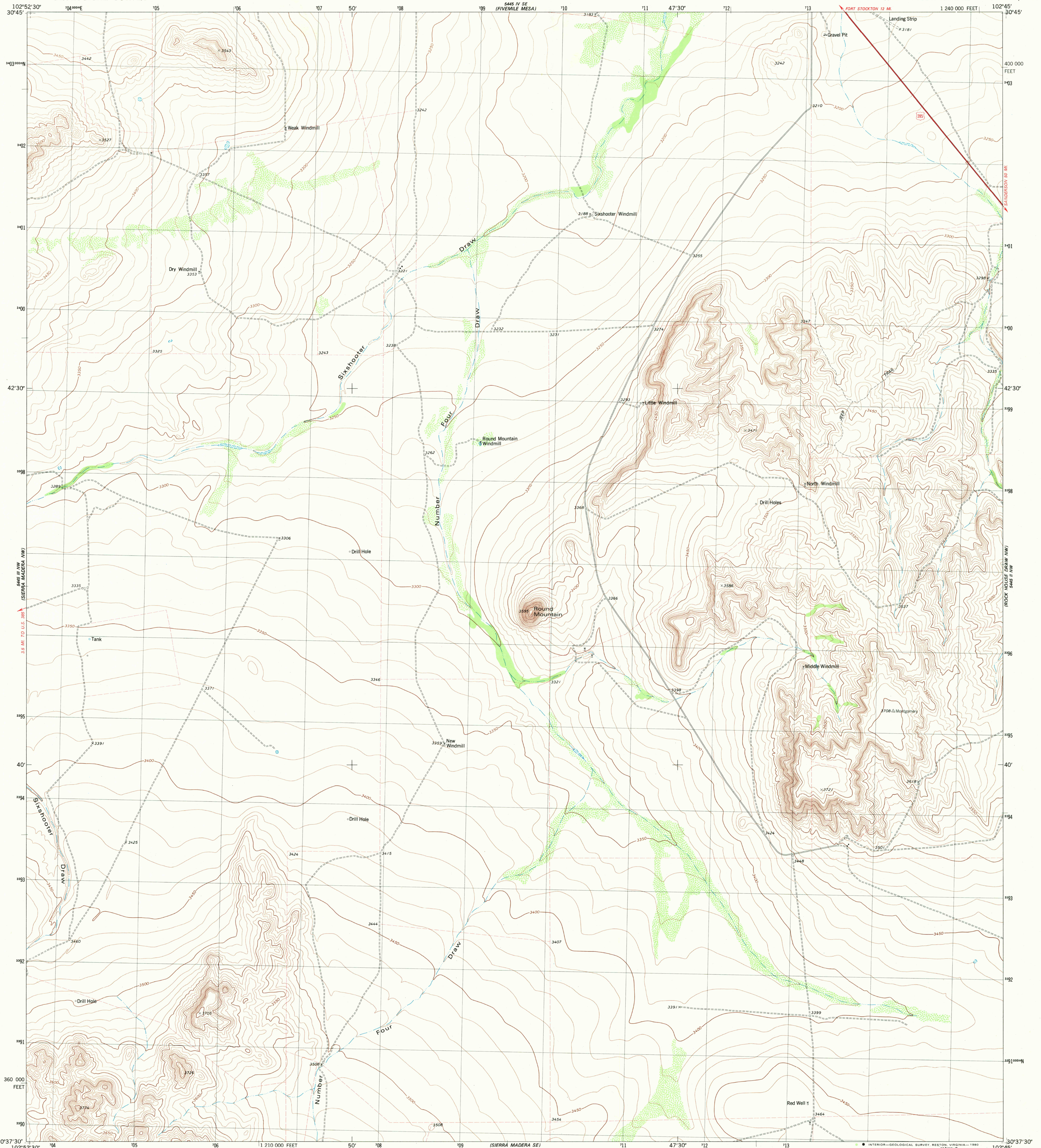


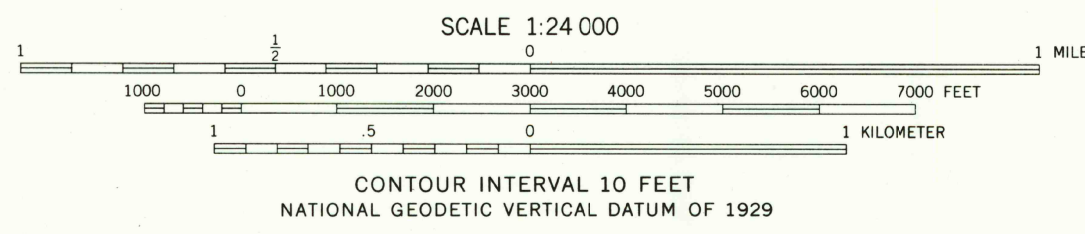
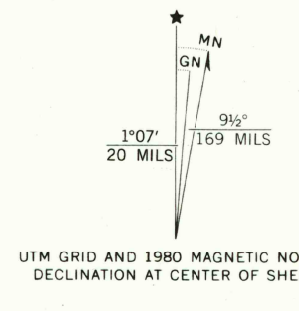
5445 III NW
(SIERRA MADERA NW)
5445 III SE
(SIERRA MADERA SE)
5445 I SW
(SIERRA MADERA SW)
5445 I NW
(SIERRA MADERA NW)
5445 I SW
(SIERRA MADERA SW)

UNITED STATES
DEPARTMENT OF THE INTERIOR
GEOLOGICAL SURVEY

SIERRA MADERA NE QUADRANGLE
TEXAS—PECOS CO.
7.5 MINUTE SERIES (TOPOGRAPHIC)
NE/4 SIERRA MADERA 15' QUADRANGLE



Mapped, edited, and published by the Geological Survey
Control by USGS and NOS/NOAA
Topography by photogrammetric methods from aerial photographs
taken 1974. Field checked 1975. Map edited 1980
Projection and 10,000-foot grid ticks: Texas
coordinate system, central zone (Lambert conformal conic)
1000-meter Universal Transverse Mercator grid, zone 13
1927 North American datum
To place on the predicted North American Datum 1983
move the projection lines 14 meters south and
41 meters east as shown by dashed corner ticks
Fine red dashed lines indicate selected fence lines



ROAD CLASSIFICATION

Primary highway, hard surface	Light-duty road, hard or improved surface
Secondary highway, hard surface	Unimproved road
Interstate Route	U. S. Route
	State Route

THIS MAP COMPLIES WITH NATIONAL MAP ACCURACY STANDARDS
FOR SALE BY U. S. GEOLOGICAL SURVEY, DENVER, COLORADO 80225, OR RESTON, VIRGINIA 22092
A FOLDER DESCRIBING TOPOGRAPHIC MAPS AND SYMBOLS IS AVAILABLE ON REQUEST

3002-324

USGS
Photocopy File
Topographic Division

SIERRA MADERA NE, TEX.
NE/4 SIERRA MADERA 15' QUADRANGLE
N3037.5-W10245/7.5
1980
DMA 5445 III NE—SERIES W882

DEC 29 1980

1950