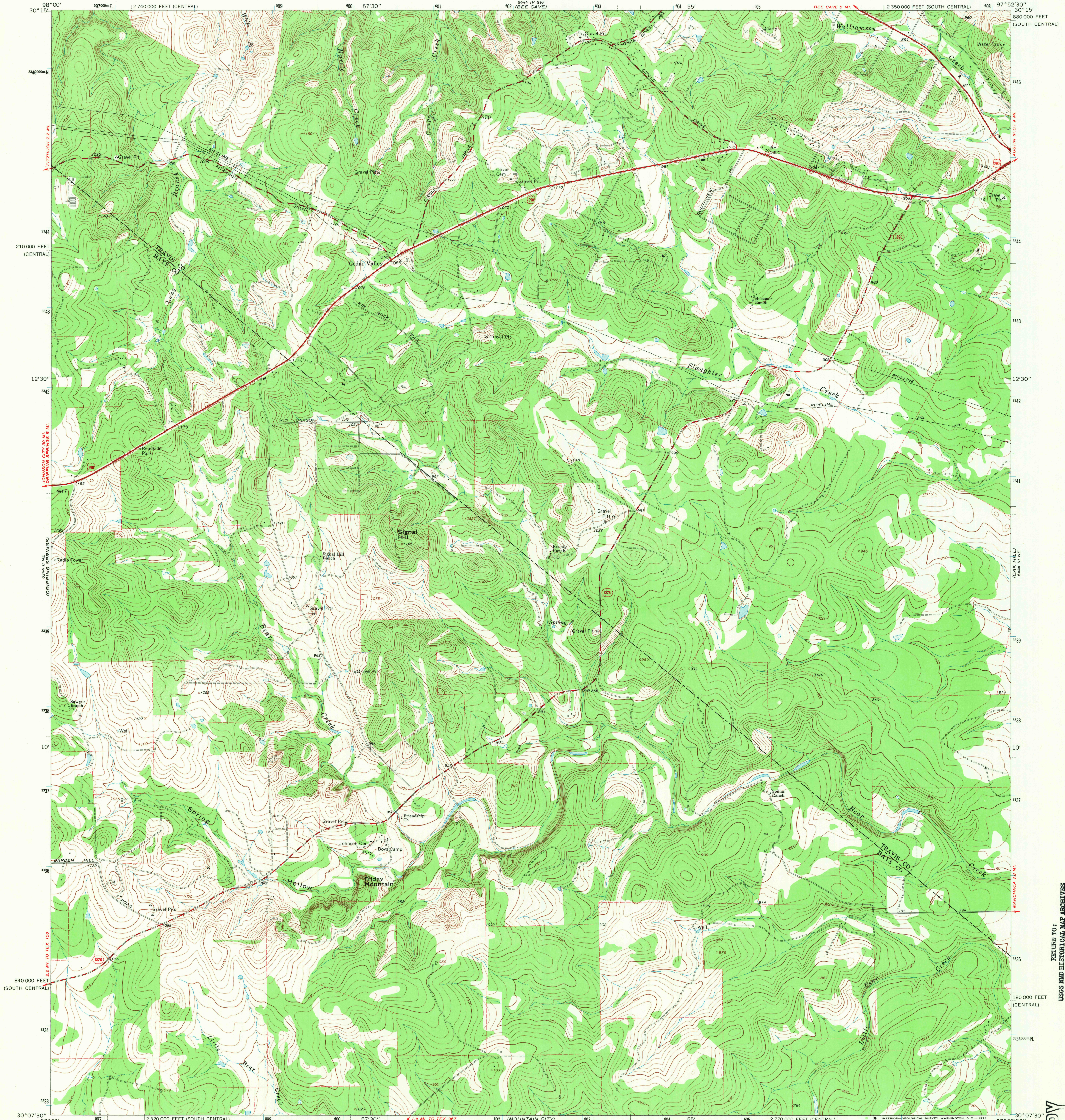
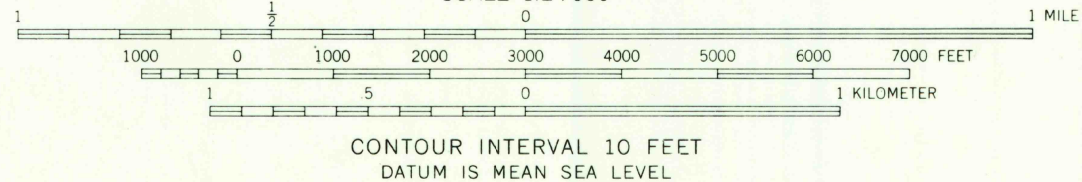
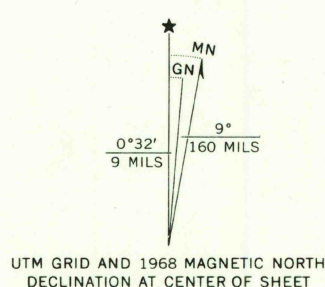


UNITED STATES  
DEPARTMENT OF THE INTERIOR  
GEOLOGICAL SURVEY

SIGNAL HILL QUADRANGLE  
TEXAS  
7.5 MINUTE SERIES (TOPOGRAPHIC)  
NW/4 BUDA 15' QUADRANGLE



Mapped, edited, and published by the Geological Survey  
Control by USGS and USC&GS  
Topography by photogrammetric methods from aerial  
photographs taken 1967. Field checked 1968  
Polyconic projection. 1927 North American datum  
10,000-foot grids based on Texas coordinate system,  
south central and central zones  
1000-meter Universal Transverse Mercator grid ticks,  
zone 14, shown in blue  
Fine red dashed lines indicate selected fence lines



ROAD CLASSIFICATION  
Primary highway, all weather, hard surface  
Secondary highway, all weather, hard surface  
Light duty road, all weather, improved surface  
Unimproved road, fair or dry weather  
U. S. Route  
State Route

U.S.G.S. TOPOGRAPHIC DIVISION  
SIGNAL HILL, TEX.  
NW/4 BUDA 15' QUADRANGLE  
N3007.5-W9752.5/7.5  
1968  
AMS 6444 III NW-SERIES V882

THIS MAP COMPLIES WITH NATIONAL MAP ACCURACY STANDARDS  
FOR SALE BY U. S. GEOLOGICAL SURVEY, DENVER, COLORADO 80225, OR WASHINGTON, D. C. 20242  
A FOLDER DESCRIBING TOPOGRAPHIC MAPS AND SYMBOLS IS AVAILABLE ON REQUEST

RETURN TO:  
USGS AND HISTORICAL MAP ARCHIVES

U.S.G.S. FILE COPY TOPOGRAPHIC DIVISION

JUL 1 1971