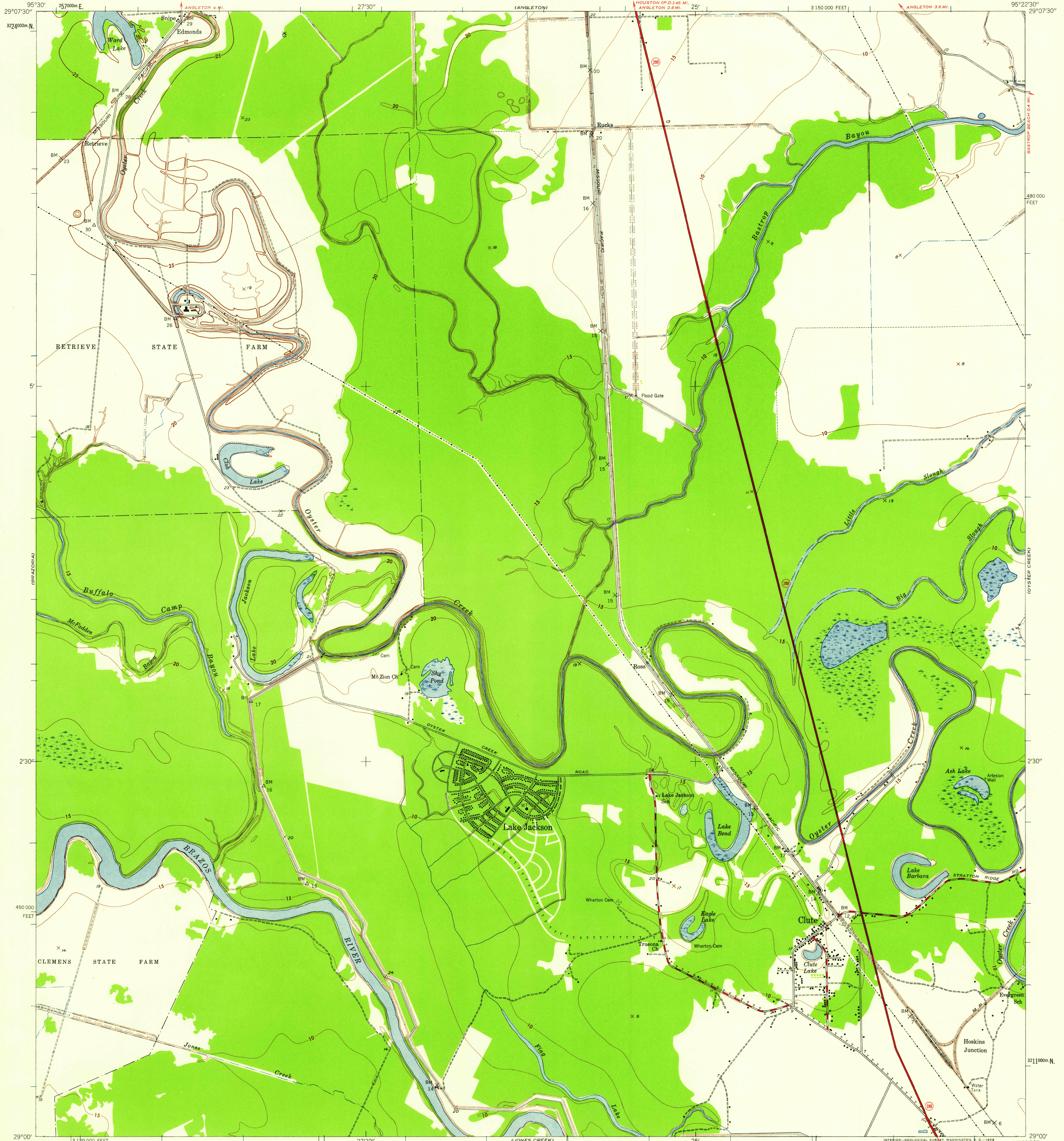


UNITED STATES
DEPARTMENT OF THE INTERIOR
GEOLOGICAL SURVEY

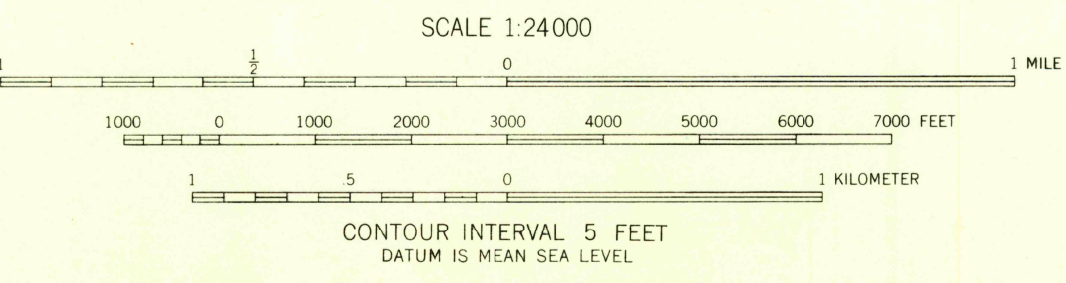
UNITED STATES
DEPARTMENT OF THE ARMY
CORPS OF ENGINEERS

SNIDE QUADRANGLE
TEXAS—BRAZORIA CO.
7.5 MINUTE SERIES (TOPOGRAPHIC)



Mapped by the Army Map Service
Published for civil use by the Geological Survey
Control by USGS, USC&GS, and TVA
Topography from aerial photographs by photogrammetric methods
and by planimetric surveys 1942-1943. Aerial photographs taken 1942
Polyconic projection. 1927 North American datum
10,000-foot grid based on Texas coordinate system, south central zone
1000-meter Universal Transverse Mercator grid ticks,
zone 15, shown in blue

TRUE NORTH
MAGNETIC NORTH
APPROXIMATE MEAN
DECLINATION, 1943



ROAD CLASSIFICATION
Heavy duty ——— Light duty ———
Medium-duty ——— Unimproved dirt ———
State Route ———

U.S.G.S.
FILE COPY
TOPOGRAPHIC DIVISION

SNIDE, TEX.
N2900-W9522.5/7.5
1943

THIS MAP COMPLIES WITH NATIONAL MAP ACCURACY STANDARDS
FOR SALE BY U.S. GEOLOGICAL SURVEY, DENVER 2, COLORADO OR WASHINGTON 25, D. C.
A FOLDER DESCRIBING TOPOGRAPHIC MAPS AND SYMBOLS IS AVAILABLE ON REQUEST

JAN - 2 1959

2460