

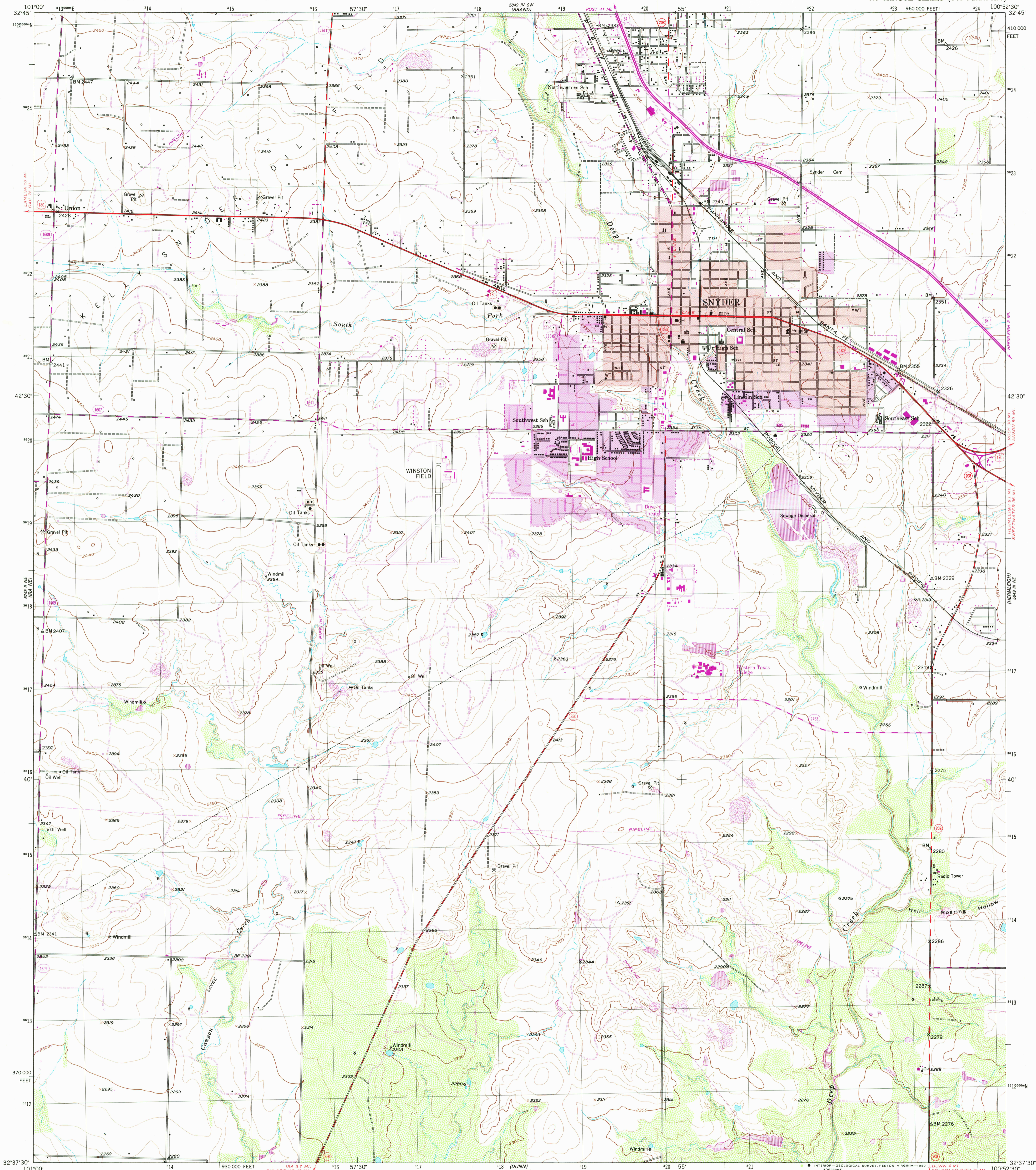
58° 15' E
(6010 METAL)

UNITED STATES
DEPARTMENT OF THE INTERIOR
GEOLOGICAL SURVEY

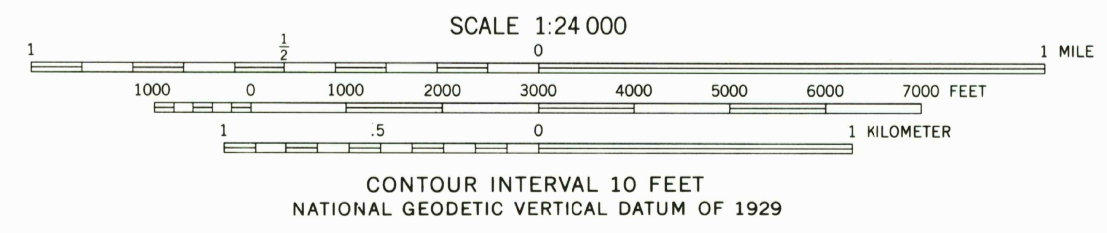
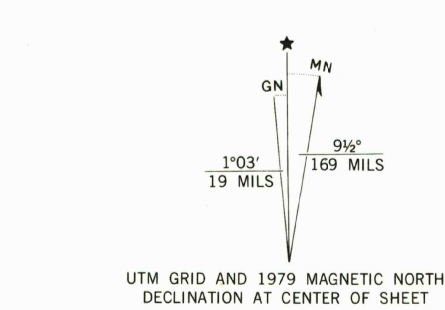


SNYDER QUADRANGLE
TEXAS—SURREY CO.
7.5 MINUTE SERIES (TOPOGRAPHIC)

58° 15' E
(6010 METAL)



Mapped, edited, and published by the Geological Survey
Control by USGS and NOS/NOAA
Topography from aerial photographs by multiplex methods
Aerial photographs taken 1948. Field check 1952
Polyconic projection. 1927 North American datum
10,000-foot grid based on Texas coordinate system,
north central zone
Red tint indicates area in which only
landmark buildings are shown
1000-meter Universal Transverse Mercator grid, zone 14
Revisions shown in purple compiled from aerial photographs
taken 1977 and other source data. This information not
field checked. Map edited 1979
Purple tint indicates extension of urban areas



ROAD CLASSIFICATION

Heavy-duty	4 LANE 16 LANE	Light-duty	2 LANE 16 LANE
Medium-duty	4 LANE 16 LANE	Unimproved dirt	-----

U.S. Route State Route

THIS MAP COMPLIES WITH NATIONAL MAP ACCURACY STANDARDS
FOR SALE BY U. S. GEOLOGICAL SURVEY, DENVER, COLORADO 80225, OR RESTON, VIRGINIA 22092
A FOLDER DESCRIBING TOPOGRAPHIC MAPS AND SYMBOLS IS AVAILABLE ON REQUEST

QUADRANGLE LOCATION
3200-323

USGS
Historical File
Topographic Division

MAY 13 1980
SNYDER, TEX.
N3237.5-W10052.5/7.5
1952
PHOTOREVISED 1979
DMA 5849 III NW—SERIES V882