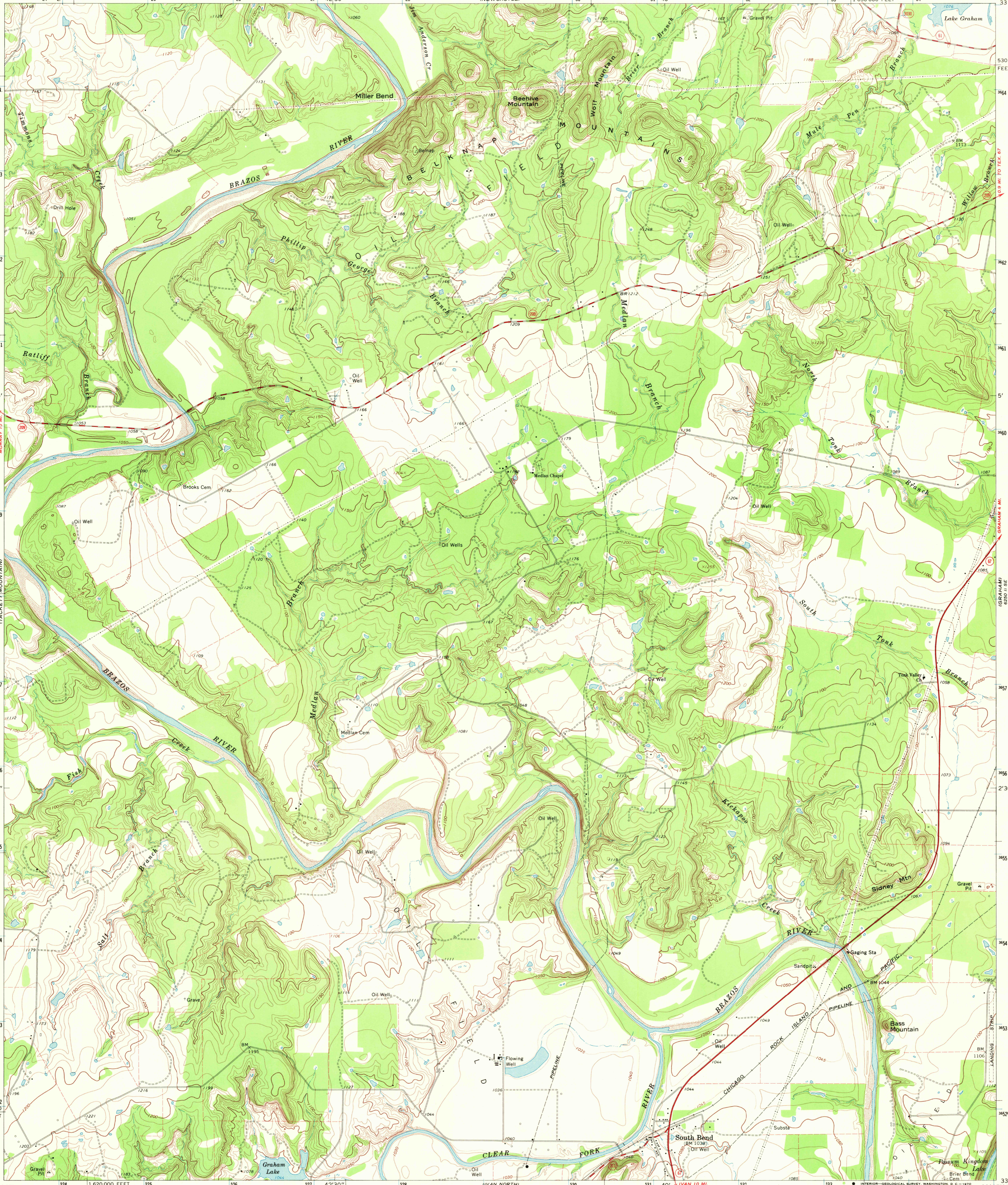


98° 45' 33" 07' 30" 924000 E 925 926 927 42° 30' 928 6250 11 NW (NEWCASTLE) 930 931 40' 932 933 934 98° 37' 30" 33° 07' 30" 1 650 000 FEET 530 000 FEET



Mapped, edited, and published by the Geological Survey

Control by USGS and USC&GS

Topography by photogrammetric methods from aerial photographs taken 1966. Field checked 1967

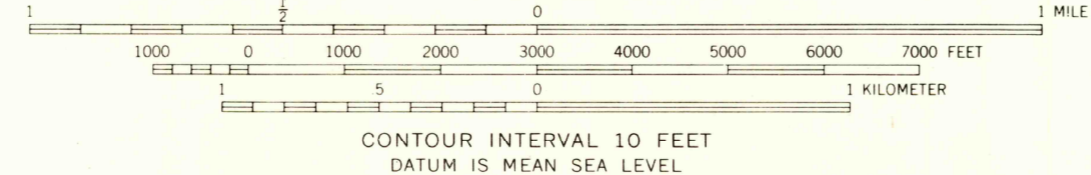
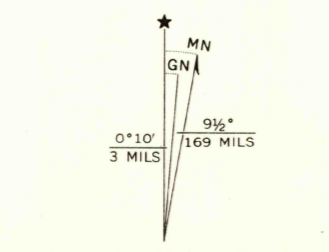
Polygonic projection. 1927 North American datum

10,000-foot grid based on Texas coordinate system, north central zone

1000-meter Universal Transverse Mercator grid ticks, zone 14, shown in blue

Fine red dashed lines indicate selected fence lines

Areas covered by dashed light-blue pattern are subject to controlled inundation



THIS MAP COMPLIES WITH NATIONAL MAP ACCURACY STANDARDS
FOR SALE BY U.S. GEOLOGICAL SURVEY, DENVER, COLORADO 80225, OR WASHINGTON, D. C. 20242
A FOLDER DESCRIBING TOPOGRAPHIC MAPS AND SYMBOLS IS AVAILABLE ON REQUEST



QUADRANGLE LOCATION

U.S.G.S.
GOVERNMENT FILE
TOPOGRAPHIC DIVISION

ROAD CLASSIFICATION
Heavy-duty ——— Light-duty ———
Medium-duty ——— Unimproved dirt ———
○ State Route

SOUTH BEND, TEX.
SW/4 GRAHAM 15' QUADRANGLE
N3300—W9837.5/7.5

1967

AMS 6250 11 SW—SERIES V882

RETURN TO:
USGS AND HISTORICAL MAP ARCHIVES
3430
1977