

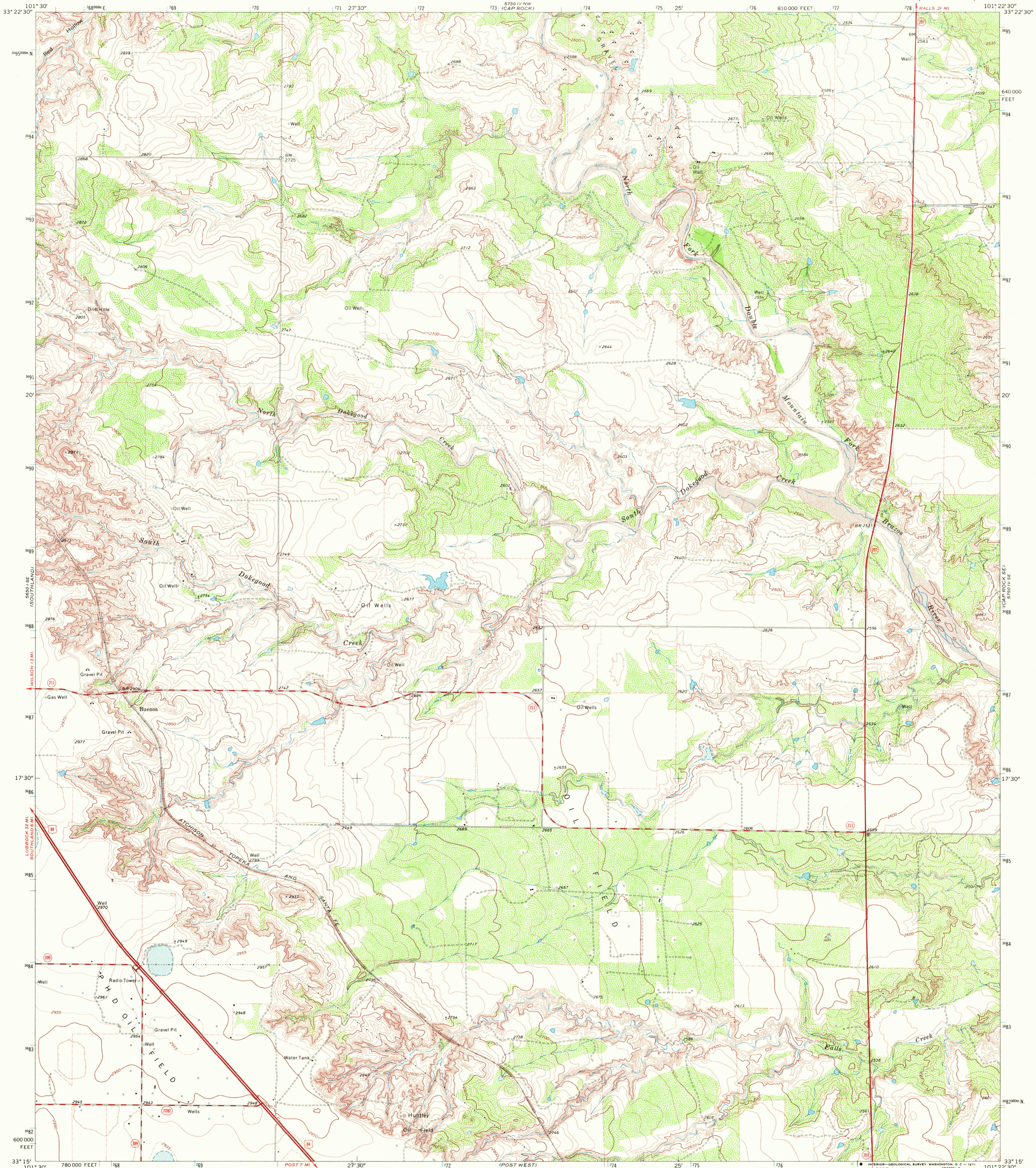
3650' N.E.  
62 4 20' N.E.

UNITED STATES  
DEPARTMENT OF THE INTERIOR  
GEOLOGICAL SURVEY

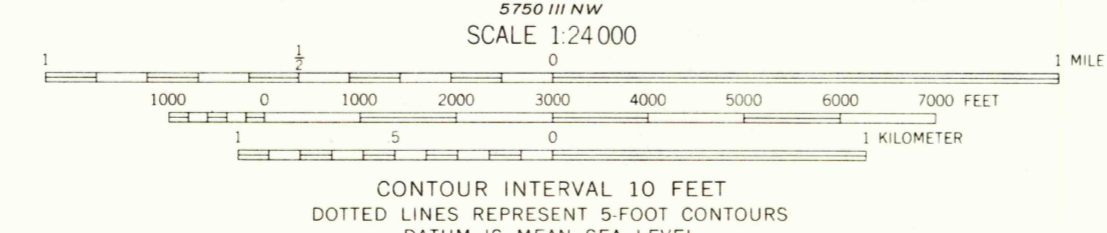
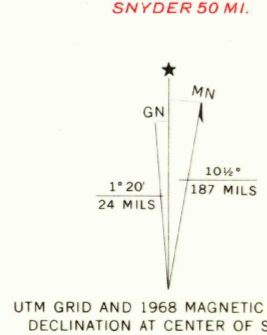
STATE OF TEXAS  
TEXAS WATER DEVELOPMENT BOARD

SOUTH DOKEGOOD CREEK QUADRANGLE  
TEXAS—GARZA CO.  
7.5 MINUTE SERIES (TOPOGRAPHIC)

5780' W.E.  
62 1 15' W.E.  
CANYON VALLEY



Mapped, edited, and published by the Geological Survey  
Control by USGS and USC&GS  
Topography by photogrammetric methods from aerial photographs taken 1968. Field checked 1968  
Polyconic projection. 1927 North American datum  
10,000-foot grid based on Texas coordinate system, north central zone  
1000-meter Universal Transverse Mercator grid ticks, zone 14, shown in blue  
Fine red dashed lines indicate selected fence lines



ROAD CLASSIFICATION

Primary highway, all weather, hard surface	Light-duty road, all weather, improved surface
Secondary highway, all weather, hard surface	Unimproved road, fair or dry weather

U.S. Route      State Route

THIS MAP COMPLIES WITH NATIONAL MAP ACCURACY STANDARDS  
FOR SALE BY U.S. GEOLOGICAL SURVEY, DENVER, COLORADO 80225, OR WASHINGTON, D.C. 20242  
A FOLDER DESCRIBING TOPOGRAPHIC MAPS AND SYMBOLS IS AVAILABLE ON REQUEST

SOUTH DOKEGOOD CREEK, TEX.  
N3315—W10122.5/7.5

USGS  
HISTORICAL FILE  
TOPOGRAPHIC DIVISION

1968  
AMS 5750 IV SW—SERIES V882

NOV 15 1971