

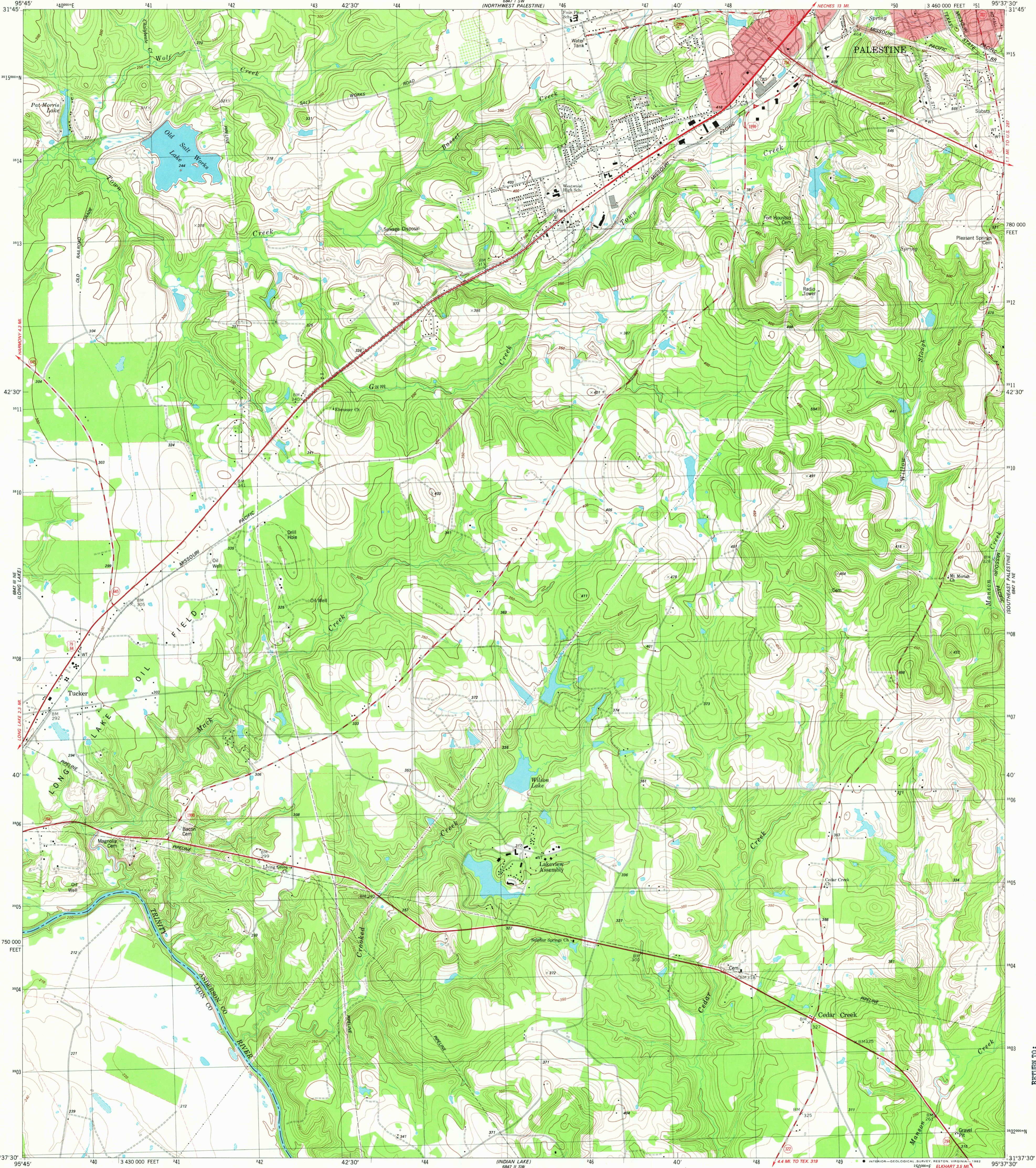
6847 II NW
6847 II SE
6847 I SE
6847 I NW

UNITED STATES
DEPARTMENT OF THE INTERIOR
GEOLOGICAL SURVEY

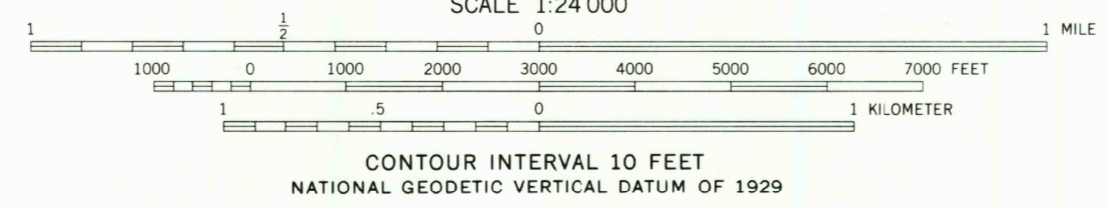
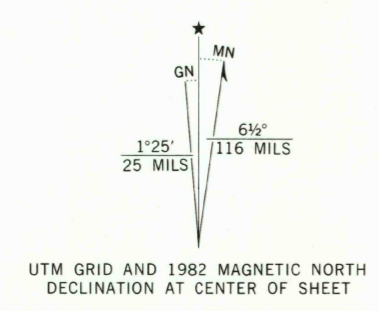
STATE OF TEXAS
TEXAS DEPARTMENT OF WATER RESOURCES

SOUTHWEST PALESTINE QUADRANGLE
TEXAS
7.5 MINUTE SERIES (TOPOGRAPHIC)

6847 II SE
6847 I SE
6847 I NW
6847 II NW



Maped, edited, and published by the Geological Survey
Control by USGS and NOS/NOAA
Topography by photogrammetric methods from aerial photographs taken 1976. Field checked 1977. Map edited 1982
Projection and 10,000-foot grid ticks: Texas coordinate system, central zone (Lambert conformal conic) 1000-meter Universal Transverse Mercator grid, zone 15 1927 North American datum
To place on the predicted North American Datum 1983 move the projection lines 14 meters south and 23 meters east as shown by dashed corner ticks
Red tint indicates areas in which only landmark buildings are shown
Fine red dashed lines indicate selected fence lines



ROAD CLASSIFICATION

Primary highway, hard surface	Light-duty road, hard or improved surface
Secondary highway, hard surface	Unimproved road
Interstate Route	U. S. Route
	State Route

THIS MAP COMPLIES WITH NATIONAL MAP ACCURACY STANDARDS
FOR SALE BY U. S. GEOLOGICAL SURVEY, DENVER, COLORADO 80225, OR RESTON, VIRGINIA 22092
A FOLDER DESCRIBING TOPOGRAPHIC MAPS AND SYMBOLS IS AVAILABLE ON REQUEST

3195-313

SOUTHWEST PALESTINE, TEX.
NW/4 ELKHART 15 QUADRANGLE
N3137.5-W9537.5/7.5

1982
DMA 6847 II NW-SERIES V882

RETURN TO:
USGS AND HISTORICAL MAP ARCHIVES

2250