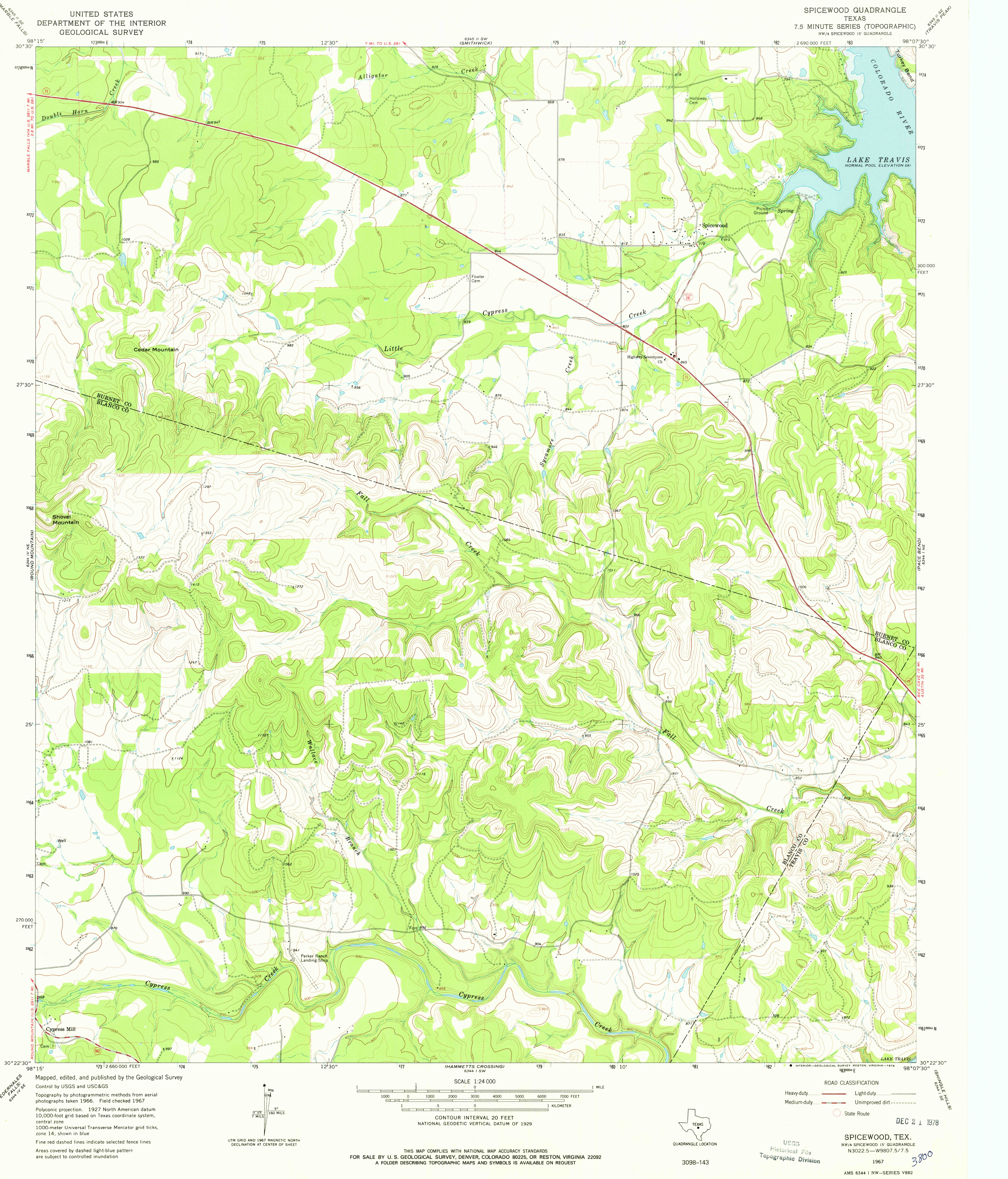
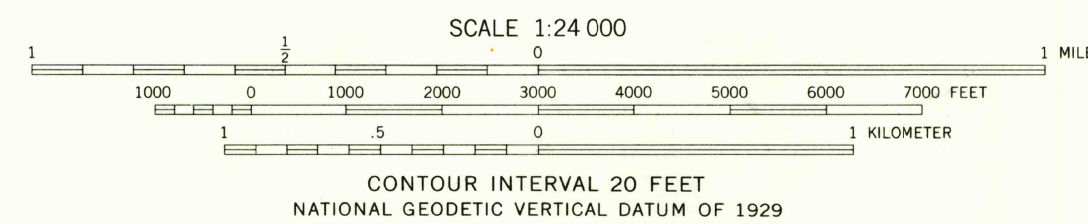
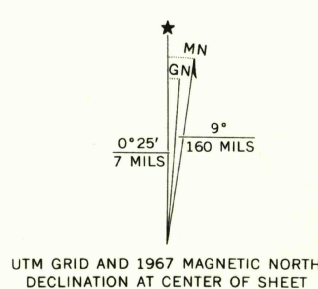


UNITED STATES
DEPARTMENT OF THE INTERIOR
GEOLOGICAL SURVEY

SPICEWOOD QUADRANGLE
TEXAS
7.5 MINUTE SERIES (TOPOGRAPHIC)
NW/4 SPICEWOOD 15' QUADRANGLE



Mapped, edited, and published by the Geological Survey
Control by USGS and USC&GS
Topography by photogrammetric methods from aerial
photographs taken 1966. Field checked 1967
Polyconic projection. 1927 North American datum
10,000-foot grid based on Texas coordinate system,
central zone
1000-meter Universal Transverse Mercator grid ticks,
zone 14, shown in blue
Fine red dashed lines indicate selected fence lines
Areas covered by dashed light-blue pattern
are subject to controlled inundation



ROAD CLASSIFICATION
Heavy-duty ——— Light-duty ———
Medium-duty ——— Unimproved dirt ———
○ State Route

SPICEWOOD, TEX.
NW/4 SPICEWOOD 15' QUADRANGLE
N3022.5—W9807.5/7.5
1967

AMS 6344 1 NW—SERIES V82

3098-143

DEC 2 1 1978

3800