

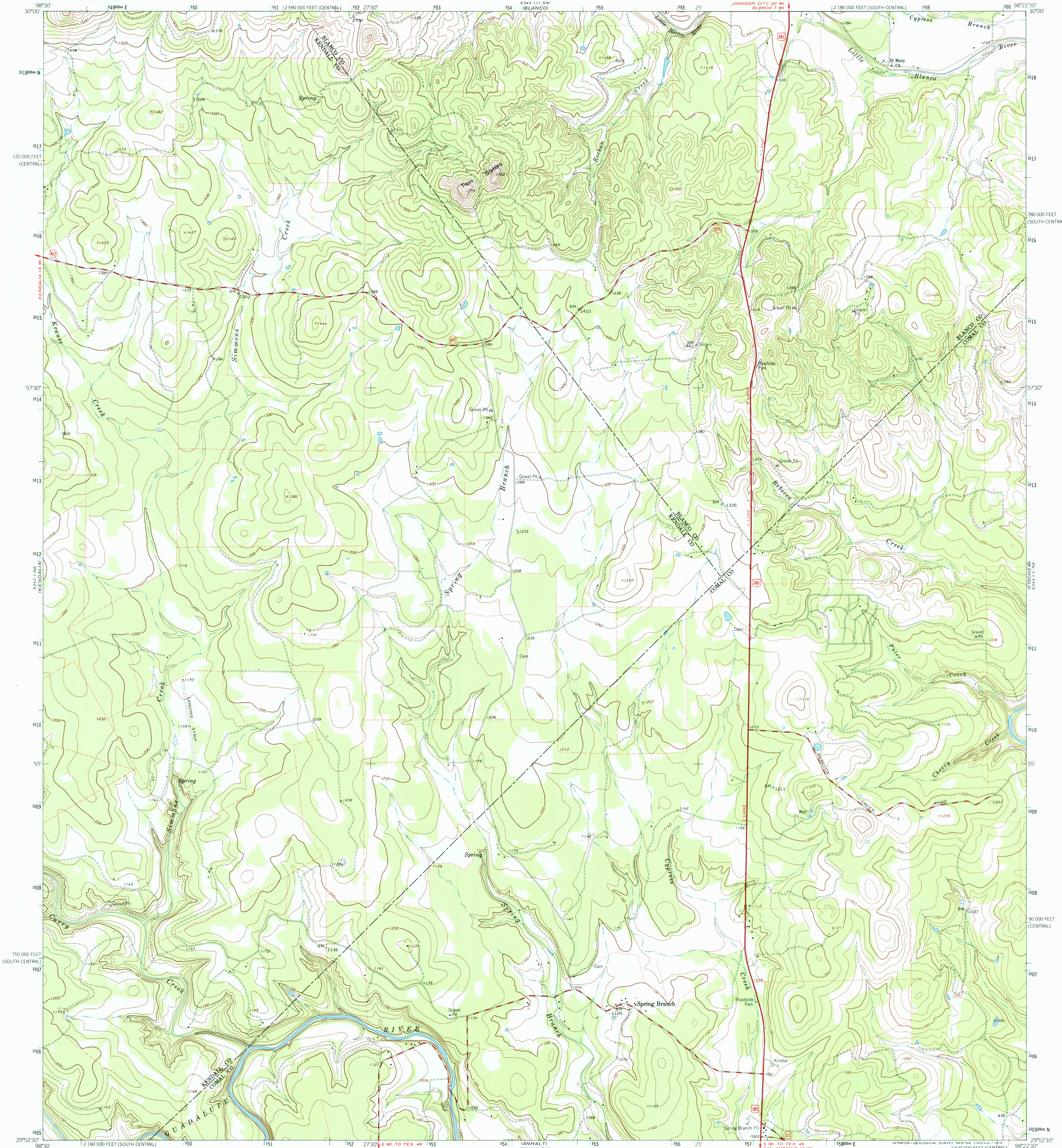
6344 11 SE
FOR BOUNDARY
OF GREEN



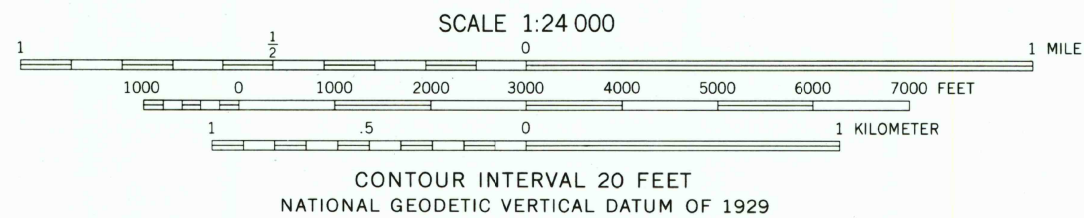
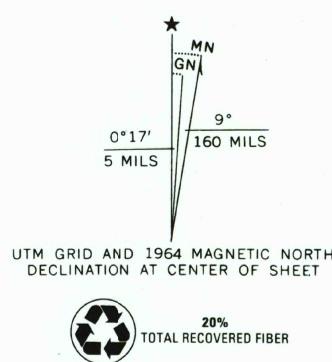
U.S. DEPARTMENT OF THE INTERIOR
U.S. GEOLOGICAL SURVEY

SPRING BRANCH QUADRANGLE
TEXAS
7.5 MINUTE SERIES (TOPOGRAPHIC)

6344 11 SE
(PAYTON)



Mapped, edited, and published by the Geological Survey
Control by USGS and USC&GS
Topography by photogrammetric methods from aerial
photographs taken 1963. Field checked 1964
Polyconic projection. 1927 North American datum
10,000-foot grids based on Texas coordinate system,
south central and central zones
1000-meter Universal Transverse Mercator grid ticks,
zone 14, shown in blue
Fine red dashed lines indicate selected fence lines



RECEIVED
APR 30 2001

ROAD CLASSIFICATION
Heavy-duty ——— Light-duty ———
Medium-duty ——— Unimproved dirt ———
U.S. Route ——— State Route ———

SPRING BRANCH, TEX.
N2952.5 - W9822.5/7.5

2998-433

HISTORICAL MAP ARCHIVES

1964
DMA 6343 IV NW - SERIES V882

THIS MAP COMPLIES WITH NATIONAL MAP ACCURACY STANDARDS
FOR SALE BY U.S. GEOLOGICAL SURVEY, P.O. BOX 25286, DENVER, COLORADO 80225
A FOLDER DESCRIBING TOPOGRAPHIC MAPS AND SYMBOLS IS AVAILABLE ON REQUEST

