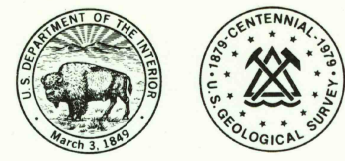


6348 N.E.
BLUFF DALE

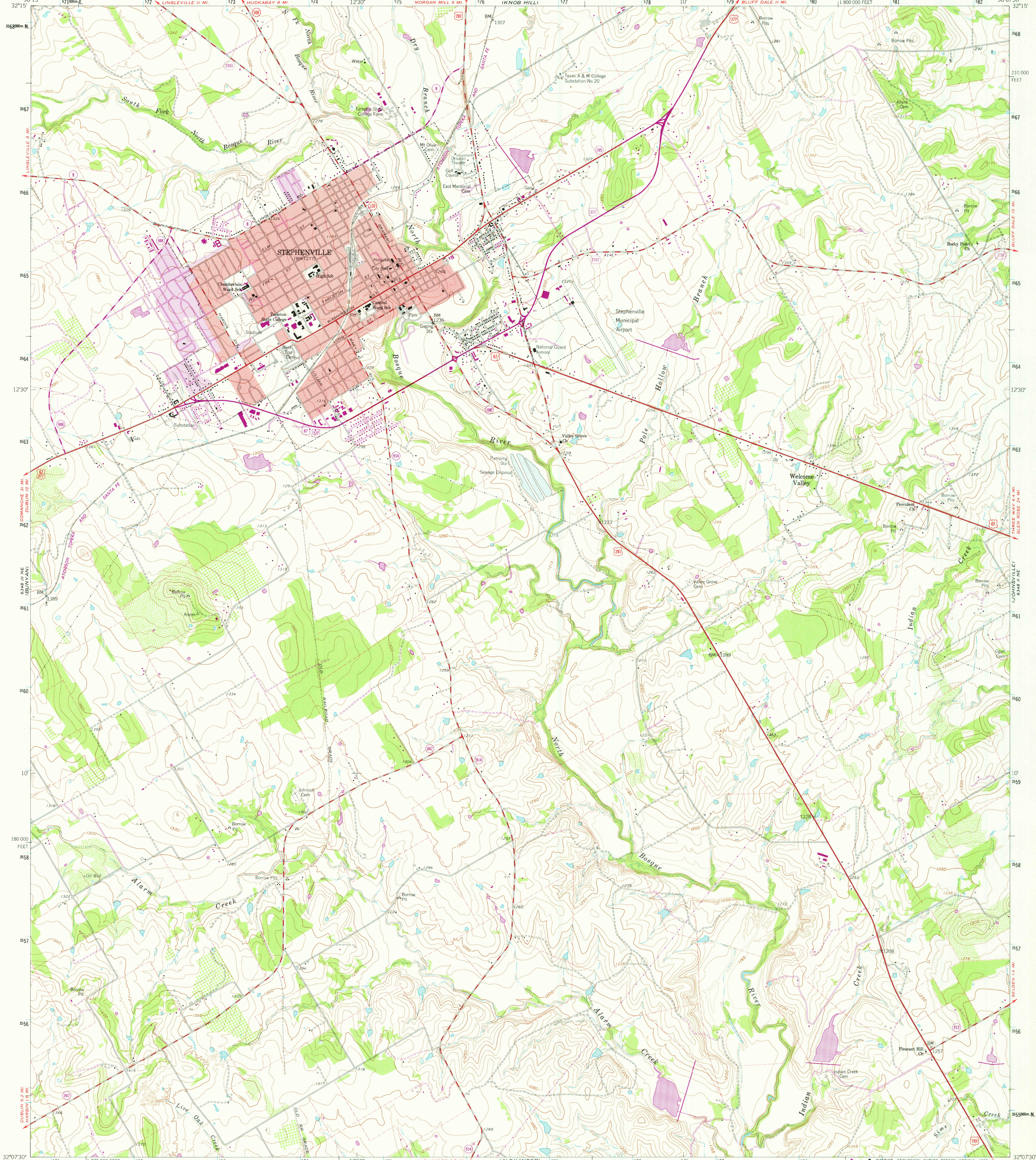
UNITED STATES
DEPARTMENT OF THE INTERIOR
GEOLOGICAL SURVEY



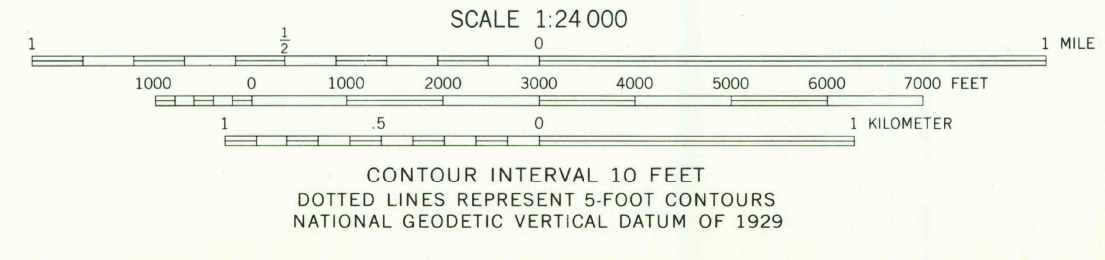
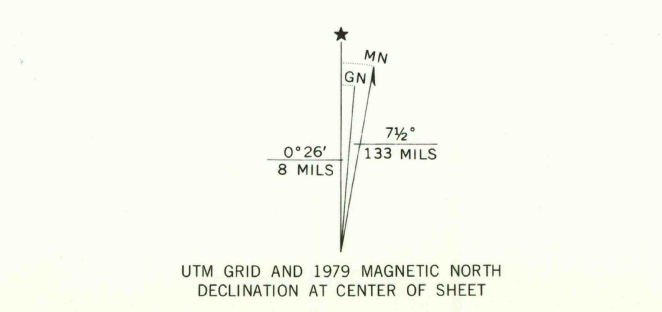
STATE OF TEXAS
TEXAS WATER COMMISSION
BRAZOS RIVER AUTHORITY
CITY OF STEPHENVILLE

STEPHENVILLE QUADRANGLE
TEXAS-ERATH CO.
7.5 MINUTE SERIES (TOPOGRAPHIC)

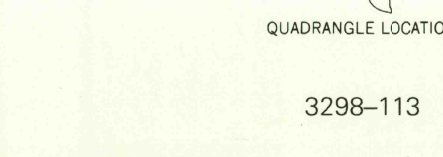
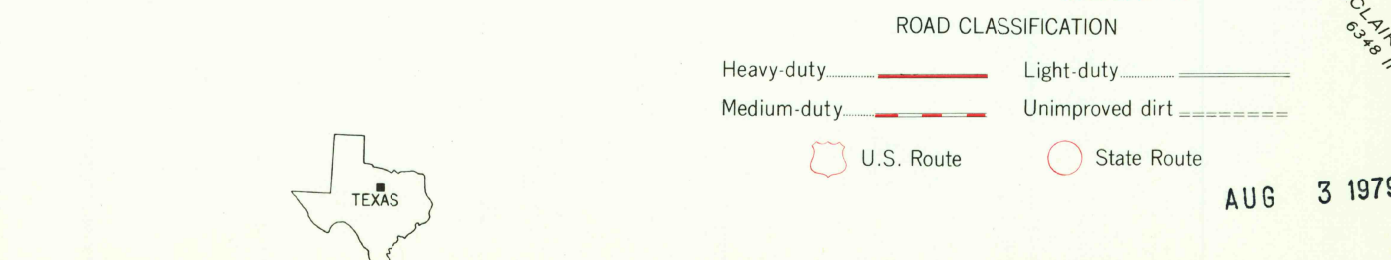
6348 E.
BLUFF DALE



Mapped, edited, and published by the Geological Survey
Control by USGS and USC&GS
Topography by photogrammetric methods from aerial photographs taken 1961. Field checked 1961
Polyconic projection. 1927 North American datum, 10,000-foot grid based on Texas coordinate system, north central zone
1000 meter Universal Transverse Mercator grid ticks, zone 14, shown in blue
Fine red dashed lines indicate selected fence and field lines where generally visible on aerial photographs. This information is unchecked
Red tint indicates areas in which only landmark buildings are shown
Revisions shown in purple and woodland compiled from aerial photographs taken 1976 and other source data
This information not field checked. Map edited 1979



SCALE 1:24 000
CONTOUR INTERVAL 10 FEET
DOTTED LINES REPRESENT 5-FOOT CONTOURS
NATIONAL GEODETIC VERTICAL DATUM OF 1929



QUADRANGLE LOCATION
USGS
Historical File
Topographic Division
STEPHENVILLE, TEX.
N3207 5 - W9807 5/7.5
1961
PHOTOREVISED 1979
AMS 6348 II NW - SERIES V882

AUG 3 1979

1850