

6348 11 NE
HUCKABAY

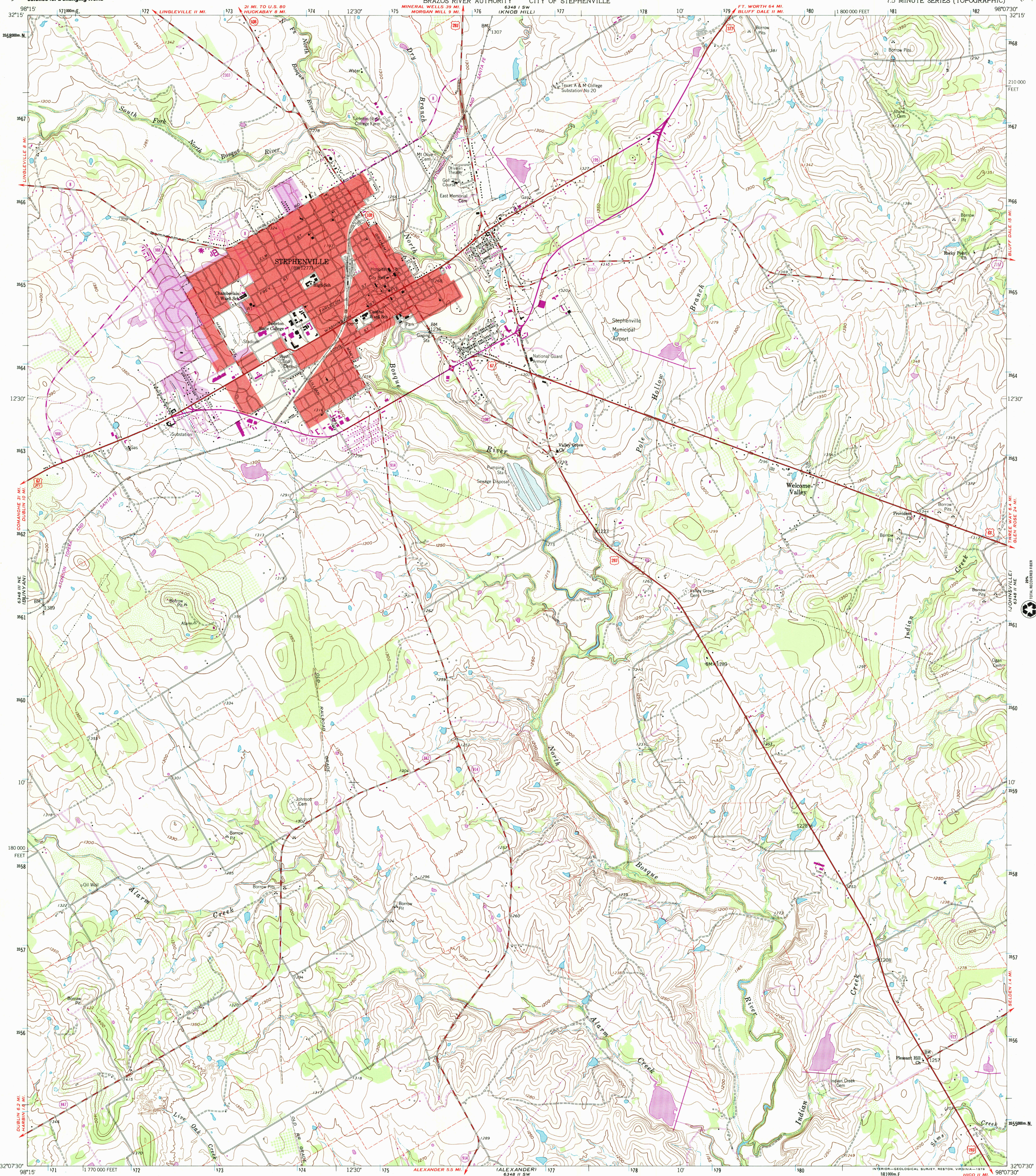


U.S. DEPARTMENT OF THE INTERIOR
U.S. GEOLOGICAL SURVEY

STATE OF TEXAS
TEXAS WATER COMMISSION
BRAZOS RIVER AUTHORITY CITY OF STEPHENVILLE

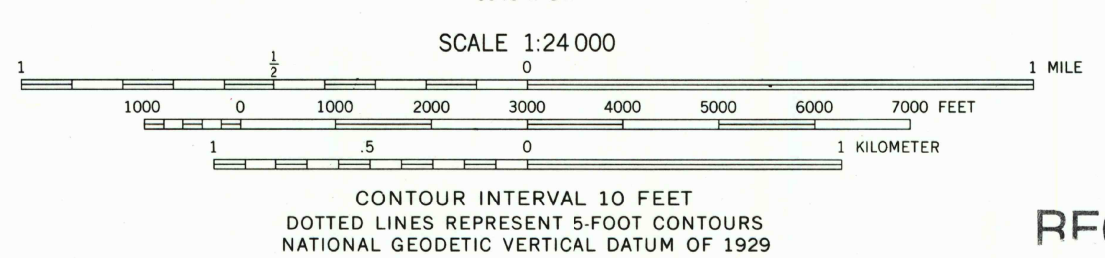
STEPHENVILLE QUADRANGLE
TEXAS-ERATH CO
7.5 MINUTE SERIES (TOPOGRAPHIC)

6348 11 SE
BLUFF DALE



Mapped, edited, and published by the Geological Survey
Control by USGS and USC&GS
Topography by photogrammetric methods from aerial photographs taken 1961. Field checked 1961
Polyconic projection 1927 North American datum 10,000-foot grid based on Texas coordinate system, north central zone
1000-meter Universal Transverse Mercator grid ticks, zone 14, shown in blue
Fine red dashed lines indicate selected fence and field lines where generally visible on aerial photographs. This information is un-checked
Red tint indicates areas in which only landmark buildings are shown
Revisions shown in purple and woodland compiled from aerial photographs taken 1976 and other source data
This information not field checked. Map edited 1979

UTM GRID AND 1979 MAGNETIC NORTH DECLINATION AT CENTER OF SHEET
8 MILS
7 1/2 MILS
133 MILS



RECEIVED
AUG 28 2003
USGS NMU
HISTORICAL MAP ARCHIVES
3298-113

ROAD CLASSIFICATION
Heavy-duty ——— Light-duty ———
Medium-duty ——— Unimproved dirt ———
U.S. Route State Route

QUADRANGLE LOCATION
TEXAS
MAR 2003
STEPHENVILLE, TEX.
N3207 5 - W9807 5 / 7 5
1961
PHOTOREVISED 1979
AMS 6348 11 NW - SERIES V882

THIS MAP COMPLIES WITH NATIONAL MAP ACCURACY STANDARDS
FOR SALE BY U.S. GEOLOGICAL SURVEY, P.O. BOX 25286, DENVER, COLORADO 80225
A FOLDER DESCRIBING TOPOGRAPHIC MAPS AND SYMBOLS IS AVAILABLE ON REQUEST

9 780607 529333
3 1818 00417569 9