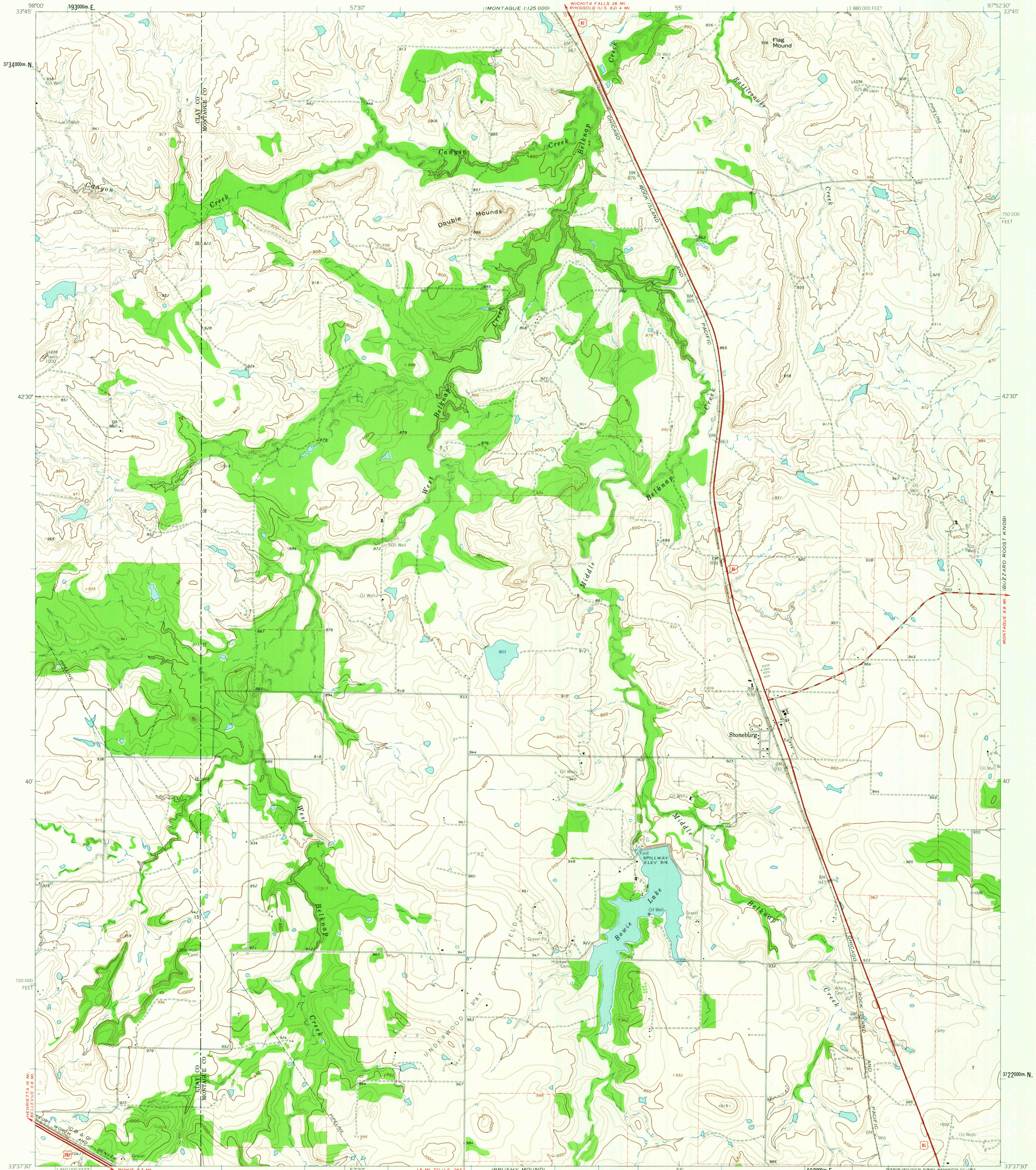
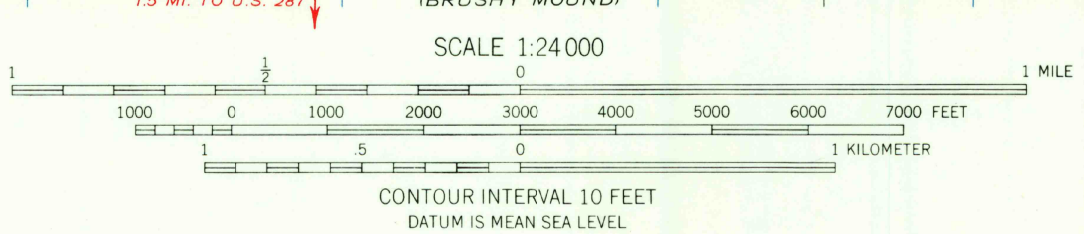


MONTAGUE 1:125 000



Mapped, edited, and published by the Geological Survey  
Control by USGS and USC&GS  
Topography by photogrammetric methods from aerial  
photographs taken 1957. Field checked 1961  
Polyconic projection. 1927 North American datum  
10,000-foot grid based on Texas coordinate system, north central zone  
1000-meter Universal Transverse Mercator grid ticks,  
zone 14, shown in blue  
Fine red dashed lines indicate selected fence lines

TRUE NORTH  
MAGNETIC NORTH  
APPROXIMATE MEAN  
DECLINATION, 1961



ROAD CLASSIFICATION  
Heavy-duty ——— Light-duty ———  
Medium-duty - - - - - Unimproved dirt - - - - -  
U.S. Route



THIS MAP COMPLIES WITH NATIONAL MAP ACCURACY STANDARDS  
FOR SALE BY U.S. GEOLOGICAL SURVEY, DENVER 25, COLORADO OR WASHINGTON 25, D. C.  
A FOLDER DESCRIBING TOPOGRAPHIC MAPS AND SYMBOLS IS AVAILABLE ON REQUEST

STONEBURG, TEX.  
N3337.5 - W9752.5/7.5  
1961

OCT 14 1963

2145