

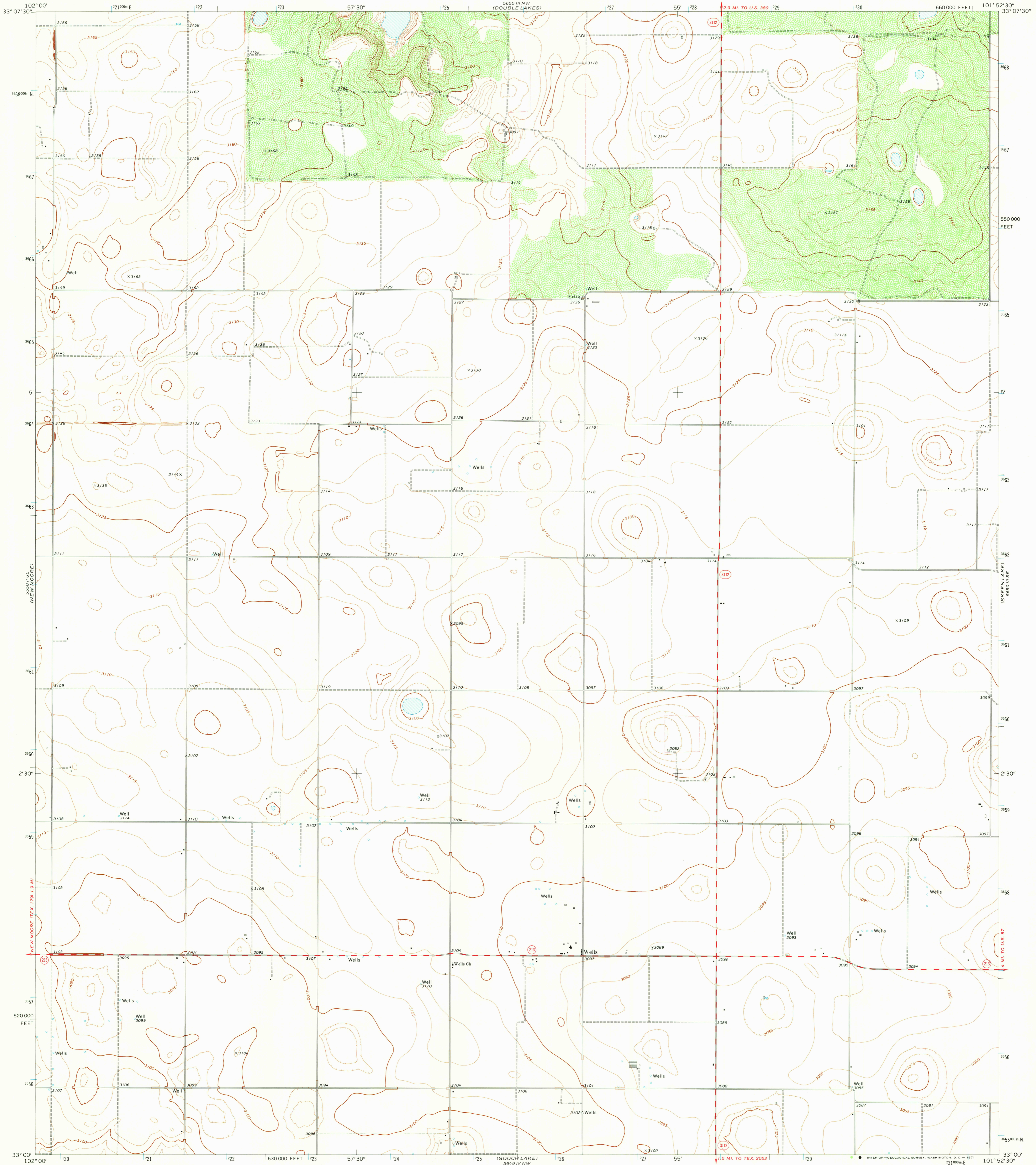
5800 FEET
(MOUND LAKE)

UNITED STATES
DEPARTMENT OF THE INTERIOR
GEOLOGICAL SURVEY

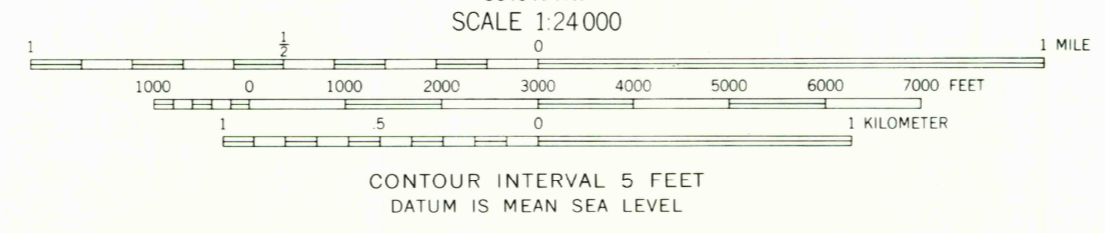
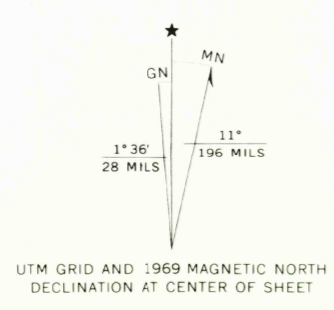
STATE OF TEXAS
TEXAS WATER DEVELOPMENT BOARD

TAHOKA SW QUADRANGLE
TEXAS—LYNN CO.
7.5 MINUTE SERIES (TOPOGRAPHIC)

5800 FEET
(TAHOKA)



Mapped, edited, and published by the Geological Survey
Control by USGS and USC&GS
Planimetry by photogrammetric methods from aerial photographs
taken 1968. Topography by planetable surveys 1969
Polyconic projection. 1927 North American datum
10,000-foot grid based on Texas coordinate system,
north central zone
1000-meter Universal Transverse Mercator grid ticks,
zone 14, shown in blue
Fine red dashed lines indicate selected fence lines



ROAD CLASSIFICATION
Secondary highway, all weather, Light-duty road, all weather,
hard surface ——— improved surface
Unimproved road, fair or dry
weather - - - - -
○ State Route



THIS MAP COMPLIES WITH NATIONAL MAP ACCURACY STANDARDS
FOR SALE BY U. S. GEOLOGICAL SURVEY, DENVER, COLORADO 80225, OR WASHINGTON D. C. 20242
A FOLDER DESCRIBING TOPOGRAPHIC MAPS AND SYMBOLS IS AVAILABLE ON REQUEST

TAHOKA SW, TEX.
N3300—W10152.5/7.5
NOV 15 1971
1969
AMS 5650 III SW—SERIES V682

USGS
HISTORICAL FILE
TOPOGRAPHIC DIVISION

2125