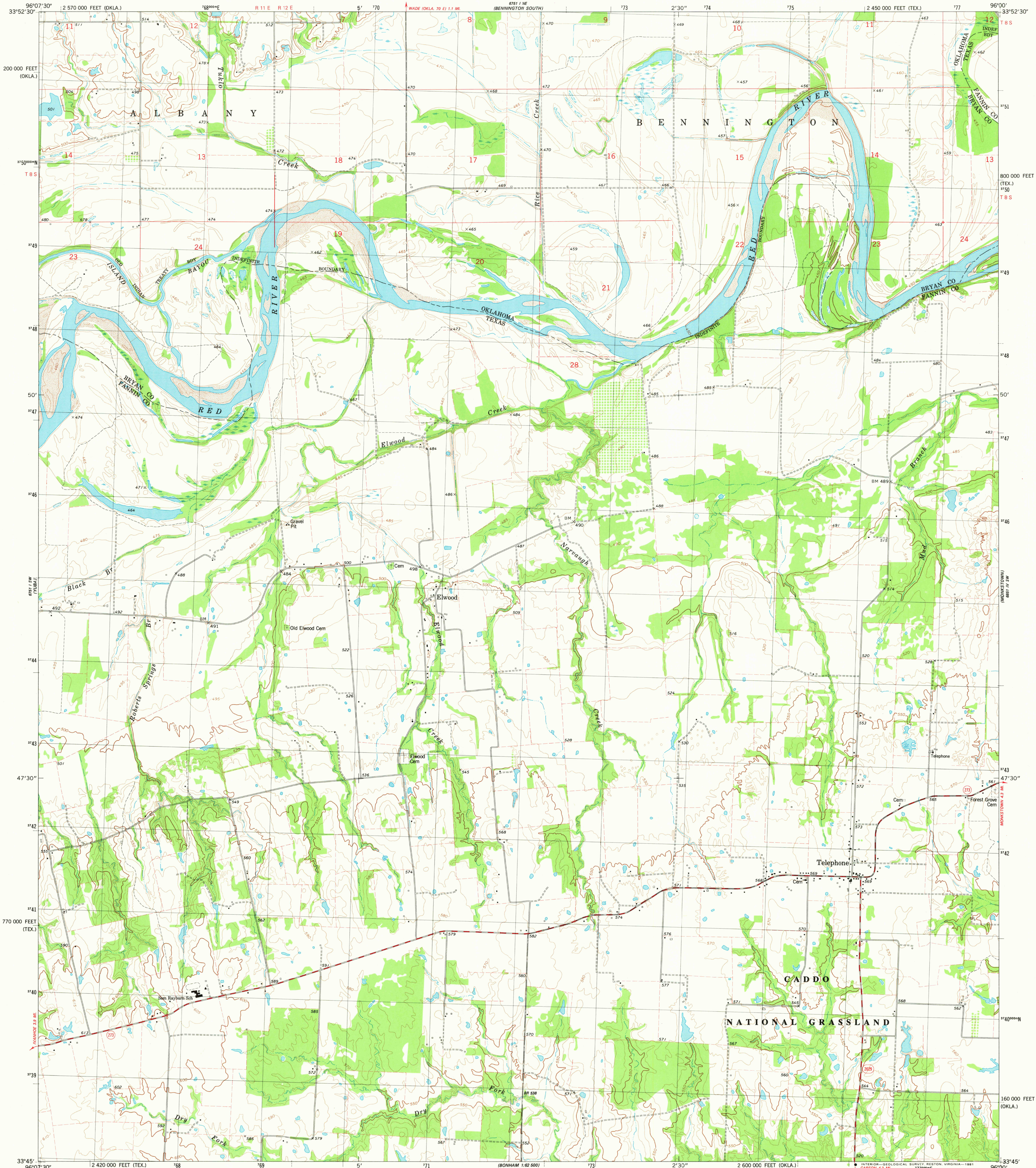


UNITED STATES
DEPARTMENT OF THE INTERIOR
GEOLOGICAL SURVEY

TELEPHONE QUADRANGLE
TEXAS-OKLAHOMA
7.5 MINUTE SERIES (TOPOGRAPHIC)
SE/4 WADE 15' QUADRANGLE



Mapped, edited, and published by the Geological Survey

Control by USGS and NOS/NOAA

Topography by photogrammetric methods from aerial photographs taken 1974. Field checked 1975. Map edited 1980

Projection: Texas coordinate system, north central zone (Lambert conformal conic)

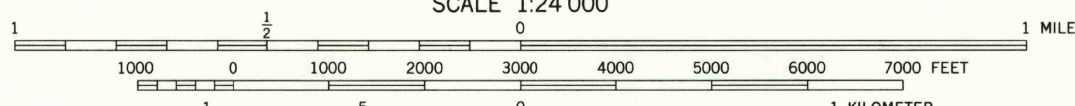
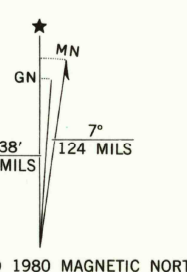
10,000-foot grid ticks based on Texas coordinate system, north central zone, and Oklahoma coordinate system, south zone

1000-meter Universal Transverse Mercator grid, zone 14 1927 North American Datum

To place on the predicted North American Datum 1983 move the projection lines 8 meters south and 24 meters east as shown by dashed corner ticks

There may be private inholdings within the boundaries of the National or State reservations shown on this map

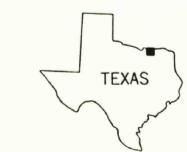
Fine red dashed lines indicate selected fence and field lines where generally visible on aerial photographs. This information is unchecked



CONTOUR INTERVAL 10 FEET
DOTTED LINES REPRESENT 5-FOOT CONTOURS
NATIONAL GEODETIC VERTICAL DATUM OF 1929

THIS MAP COMPLIES WITH NATIONAL MAP ACCURACY STANDARDS
FOR SALE BY U. S. GEOLOGICAL SURVEY, DENVER, COLORADO 80225, OR RESTON, VIRGINIA 22092
AND BY THE OKLAHOMA GEOLOGICAL SURVEY, NORMAN, OKLAHOMA 73069
A FOLDER DESCRIBING TOPOGRAPHIC MAPS AND SYMBOLS IS AVAILABLE ON REQUEST

ROAD CLASSIFICATION	
Primary highway, hard surface	Light-duty road, hard or improved surface
Secondary highway, hard surface	Unimproved road
Interstate Route	U. S. Route
	State Route



QUADRANGLE LOCATION

TELEPHONE, TEX.-OKLA.

SE/4 WADE 15' QUADRANGLE
N3345-W9600/7.5

1980

DMA 6751 1 SE-SERIES W862

3396-441

USGS
Historical
National
Mapping Div

2200