

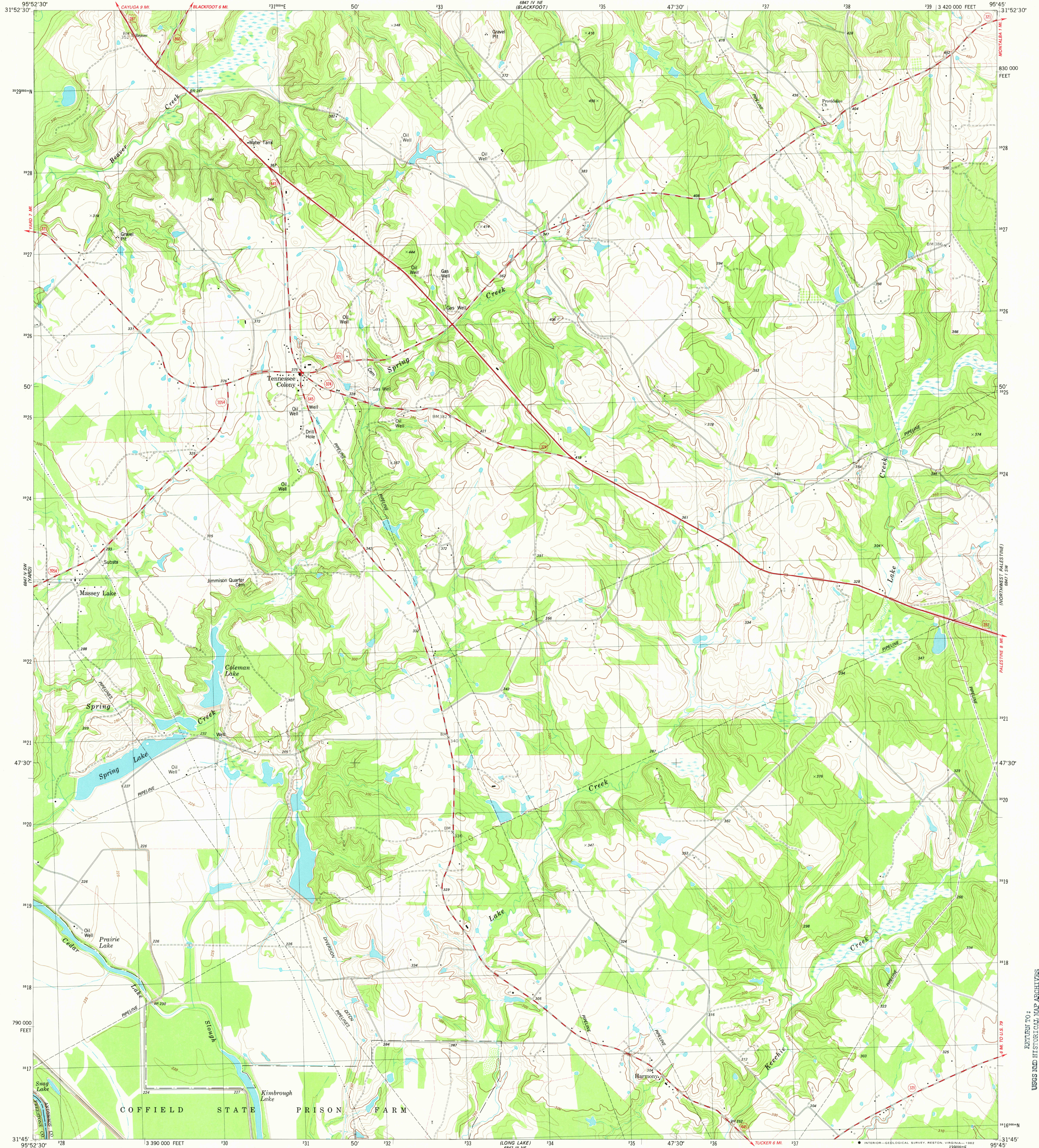
6847 IV NW
100' (1/4) (1/2)

UNITED STATES
DEPARTMENT OF THE INTERIOR
GEOLOGICAL SURVEY

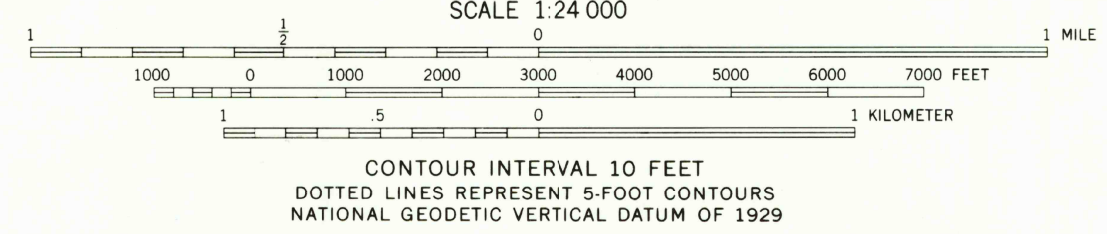
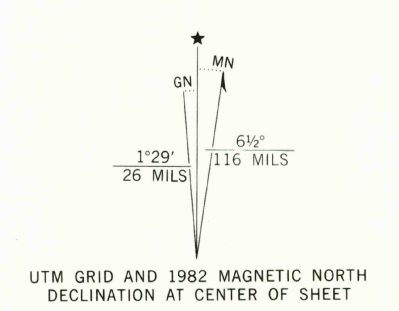
STATE OF TEXAS
TEXAS DEPARTMENT OF WATER RESOURCES

TENNESSEE COLONY QUADRANGLE
TEXAS
7.5 MINUTE SERIES (TOPOGRAPHIC)
SE/4 TENNESSEE COLONY 15' QUADRANGLE

6847 IV NE
100' (1/4) (1/2)



Mapped, edited, and published by the Geological Survey
Control by USGS and NOS/NOAA
Topography by photogrammetric methods from aerial photographs taken 1976. Field checked 1977. Map edited 1982
Projection and 10,000-foot grid ticks: Texas coordinate system, central zone (Lambert conformal conic) 1000-meter Universal Transverse Mercator grid, zone 15 1927 North American datum
To place on the predicted North American Datum 1983 move the projection lines 14 meters south and 23 meters east as shown by dashed corner ticks
Fine red dashed lines indicate selected fence lines
There may be private inholdings within the boundaries of the National or State reservations shown on this map



ROAD CLASSIFICATION

| | |
|---------------------------------|---|
| Primary highway, hard surface | Light-duty road, hard or improved surface |
| Secondary highway, hard surface | Unimproved road |
| Interstate Route | U.S. Route |
| | State Route |

THIS MAP COMPLIES WITH NATIONAL MAP ACCURACY STANDARDS
FOR SALE BY U. S. GEOLOGICAL SURVEY, DENVER, COLORADO 80225, OR RESTON, VIRGINIA 22092
A FOLDER DESCRIBING TOPOGRAPHIC MAPS AND SYMBOLS IS AVAILABLE ON REQUEST

3195-331

TENNESSEE COLONY, TEXAS
SE/4 TENNESSEE COLONY 15' QUADRANGLE
N3145-W9545/7.5

1982

DMA 6847 IV SE-SERIES F882

USGS AND HISTORICAL MAP ARCHIVES

DEC 22 1982

1950