

RETAINED COPY

This sheet must not be taken from the files without an order from the Chief Topographic Engineer.

575-S-III-W/2-SW/4  
STATE OF TEXAS  
BOARD OF WATER ENGINEERS  
JOHN A. NORRIS, CHAIRMAN  
C. S. CLARK, A. H. DUNLAP  
(TEXAS)

Advance sheet  
Subject to correction

# TOPOGRAPHIC FILES

TEXAS  
(ORANGE COUNTY)  
TERRY 7 1/2 QUADRANGLE

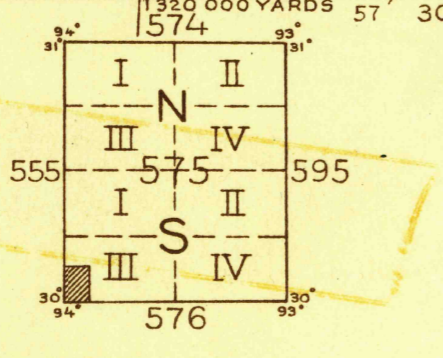
DEPARTMENT OF THE INTERIOR  
U. S. GEOLOGICAL SURVEY



Topography by C.L. Nelson and C.W. Goodlove  
Culture and drainage in part compiled from aerial photographs  
taken by Air Corps, U. S. Army  
Control by U. S. Geological Survey and U. S. Coast and Geodetic Survey  
Surveyed in 1926



TRUE NORTH  
MAGNETIC NORTH  
APPROXIMATE MEAN DECLINATION, 1926



Scale 24,000  
1 0.5 0 1 2 Miles  
5000 0 5000 10000 Feet

Contour interval 2 feet  
Datum is mean sea level

FILE COPY  
MAP INFORMATION OFFICE

Elevation legend  
T Top  
B Bottom  
W Water

Water and bank opposite  
16.3 W

Polygonic projection. North American datum  
5000 yard grid based upon U. S. zone system, D

TERRY 7 1/2, TEX

Published as advance sheet only

SECTION NO. 1  
1925 AND HISTORICAL MAP ARCHIVES