

Advance sheet  
Subject to correction

U. S. G. S.  
FILE COPY  
Inspection and Editing



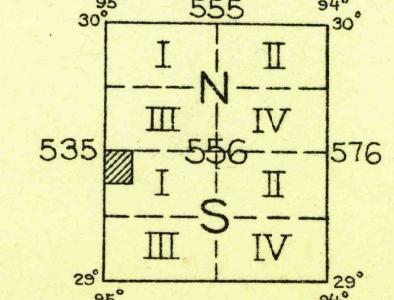
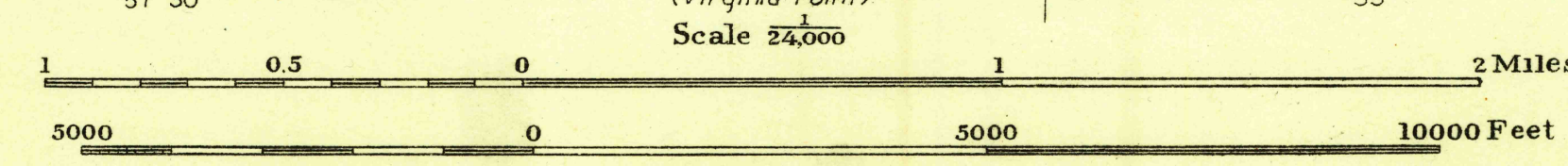
(Seabrook) 95° 00'  
29° 30'  
27° 30'  
25°  
23° 30'  
(Hitchcock) 95° 00'

94° 52' 30"  
29° 30'  
27° 30'  
25°  
23° 30'  
5 Miles

H. H. Hodgeson, Division Engineer  
Topography by S. T. Penick and S. S. Evans  
Control by U. S. Coast and Geodetic Survey,  
Corps of Engineers, U. S. Army, and  
Texas Reclamation Department  
Surveyed in 1929

Penick
Evans

APPROXIMATE MEAN  
DECLINATION, 1929



Polygonic projection - North American datum  
5000 yard grid based upon U. S. zone system, D

Gas Bumps

TEXAS CITY, TEX.

USGS  
Historical File  
Topographic Division