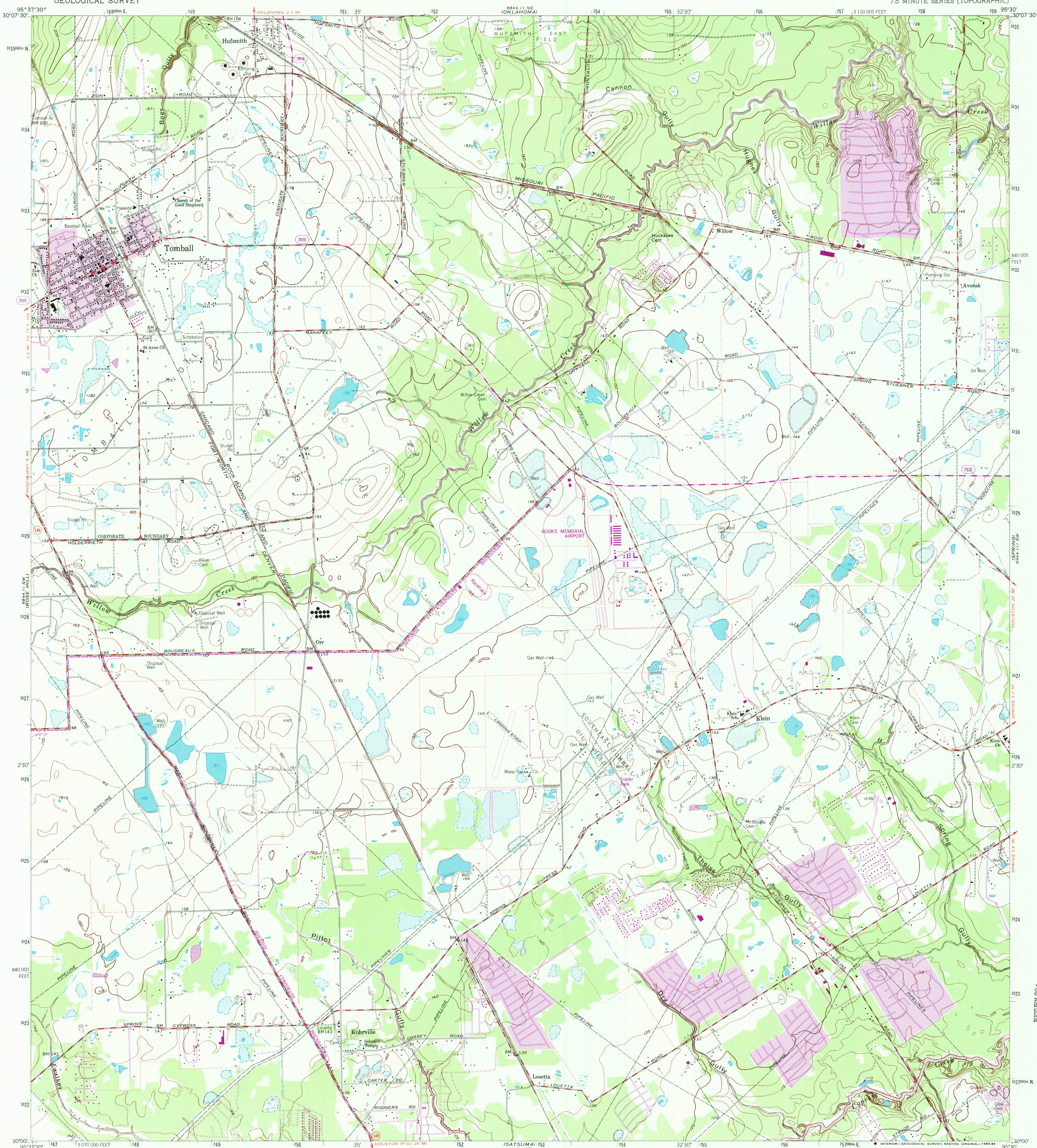


684111N  
684111E

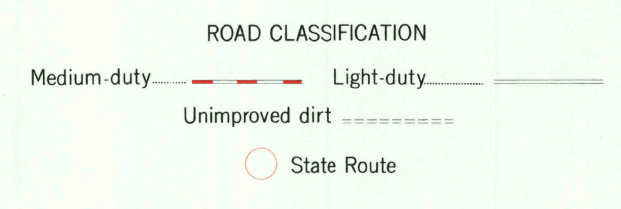
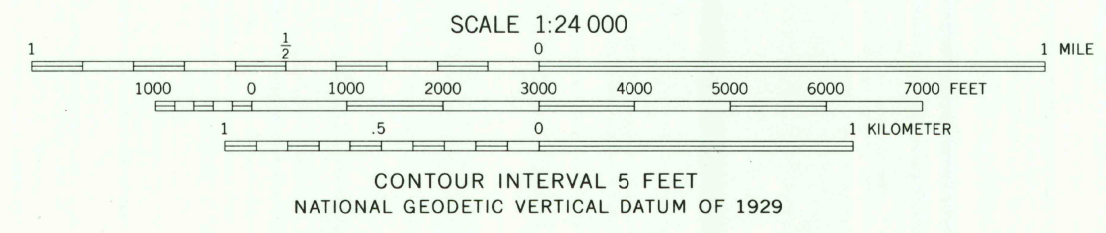
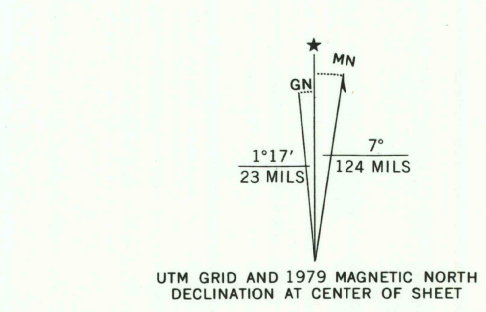
UNITED STATES  
DEPARTMENT OF THE INTERIOR  
GEOLOGICAL SURVEY

TOMBALL QUADRANGLE  
TEXAS-HARRIS CO.  
7.5 MINUTE SERIES (TOPOGRAPHIC)

684111N  
684111E



Mapped, edited, and published by the Geological Survey  
Control by USGS and NOS/NOAA  
Planimetry by photogrammetric methods from aerial photographs  
taken 1957. Topography by planetable surveys 1962  
Polyconic projection. 1927 North American datum  
10,000-foot grid based on Texas coordinate system, south central zone  
1000-meter Universal Transverse Mercator grid ticks,  
zone 15, shown in blue  
Fine red dashed lines indicate selected fence lines  
To place on the predicted North American Datum 1983  
move the projection lines 19 meters south and  
22 meters east as shown by dashed corner ticks  
Revisions shown in purple and woodland compiled from  
aerial photographs taken 1977 and other source data.  
This information not field checked. Map edited 1979



THIS MAP COMPLIES WITH NATIONAL MAP ACCURACY STANDARDS  
FOR SALE BY U. S. GEOLOGICAL SURVEY, DENVER, COLORADO 80225, OR RESTON, VIRGINIA 22092  
A FOLDER DESCRIBING TOPOGRAPHIC MAPS AND SYMBOLS IS AVAILABLE ON REQUEST

3095-211

TOMBALL, TEX.  
N3000-W9530/7.5  
1962  
PHOTOREVISED 1979  
DMA 6844 11 SE-SERIES V82

RETURN TO:  
USGS AND HISTORICAL MAP ARCHIVES