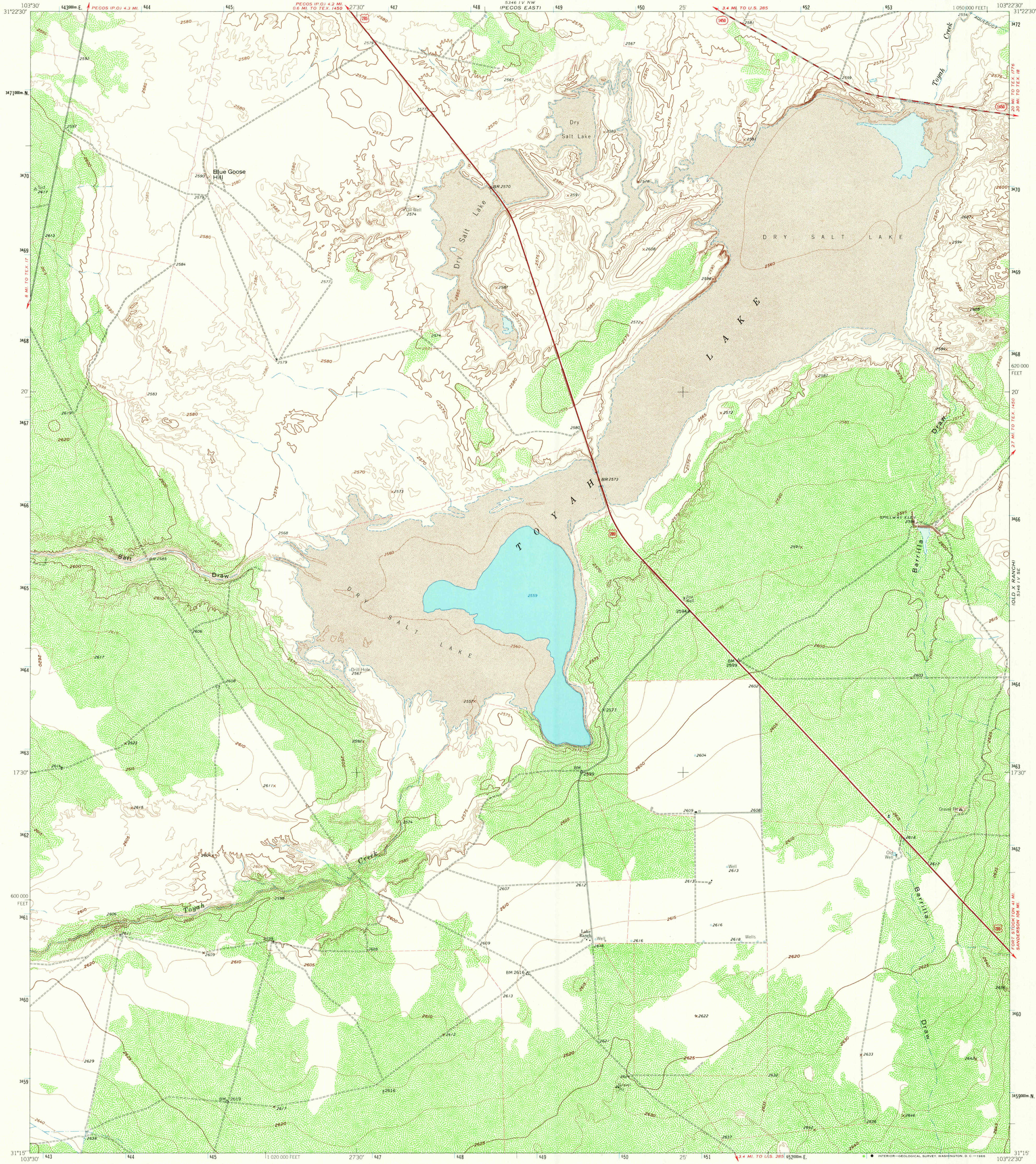
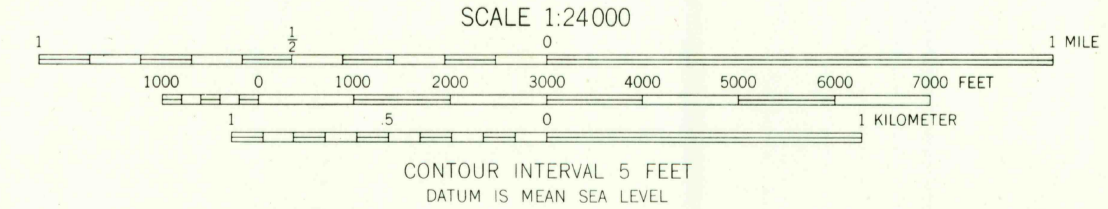
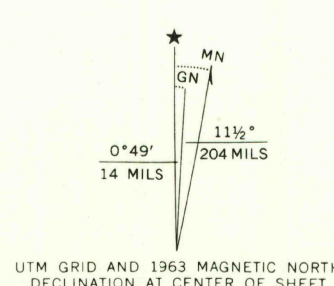


5346 IV NE
10/10 DRAWN



Mapped, edited, and published by the Geological Survey
Control by USGS and USC&GS
Planimetry by photogrammetric methods from aerial photographs
taken 1960. Topography by planetable surveys 1963
Polyconic projection 1927 North American datum
10,000-foot grid based on Texas coordinate system, central zone
1000-meter Universal Transverse Mercator grid ticks,
zone 13, shown in blue
Fine red dashed lines indicate selected fence lines



ROAD CLASSIFICATION

Heavy-duty	Light-duty
Medium-duty	Unimproved dirt
U.S. Route	State Route



THIS MAP COMPLIES WITH NATIONAL MAP ACCURACY STANDARDS
FOR SALE BY U.S. GEOLOGICAL SURVEY, DENVER, COLORADO 80225, OR WASHINGTON, D.C. 20242
A FOLDER DESCRIBING TOPOGRAPHIC MAPS AND SYMBOLS IS AVAILABLE ON REQUEST

U.S.G.S.
TOPOGRAPHIC DIVISION

TOYAH LAKE, TEX.
N3115-W10322.5/75
1963
AMS 5346 IV SW-SERIES V882

2245
NOV 2 1963