

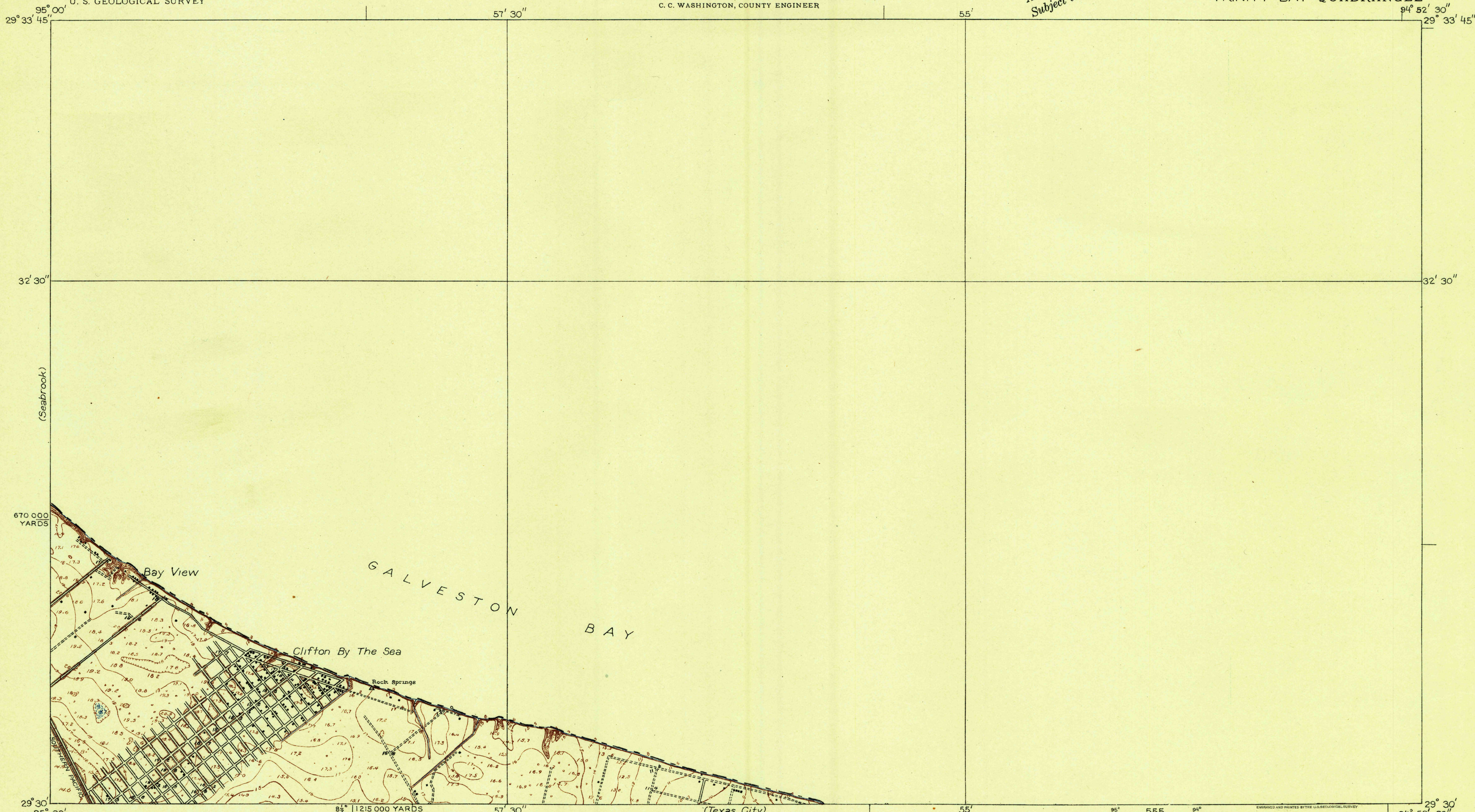
DEPARTMENT OF THE INTERIOR
U. S. GEOLOGICAL SURVEY

GALVESTON COUNTY, TEXAS
COUNTY COMMISSIONERS COURT
E. B. HOLMAN, COUNTY JUDGE
JAMES A. BODDEKER (PRECINCT 1), HUMPHREY D. BOYD (PRECINCT 2)
VICTOR DANTIN (PRECINCT 3), AND W. T. SMITH (PRECINCT 4)
C. C. WASHINGTON, COUNTY ENGINEER

TEXAS
(GALVESTON COUNTY)
TRINITY BAY QUADRANGLE

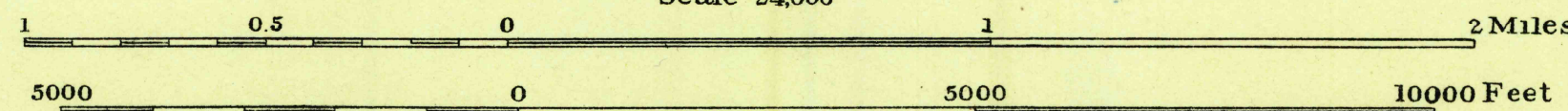
Advance sheet
Subject to correction

U. S. G. S.
FILE COPY
Inspection and Editing

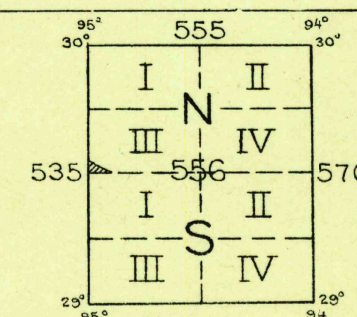


H. H. Hodgeson, Division Engineer
Topography by A.W. Plushnick
Control by Corps of Engineers, U. S. Army and
Texas Reclamation Department
Surveyed in 1929

TRUE NORTH
MAGNETIC NORTH
APPROXIMATE MEAN
DECLINATION, 1929



Contour interval 1 foot
Datum is mean sea level



ENGRAVED AND PRINTED BY THE U.S. GEOLOGICAL SURVEY
Polyconic projection. North American datum
5000 yard grid based upon U. S. zone system, D

Gas Bumps

TRINITY BAY, TEX.

USGS
Historical File
Topographic Division

U. S. G. S.
FILE COPY
Inspection and Editing