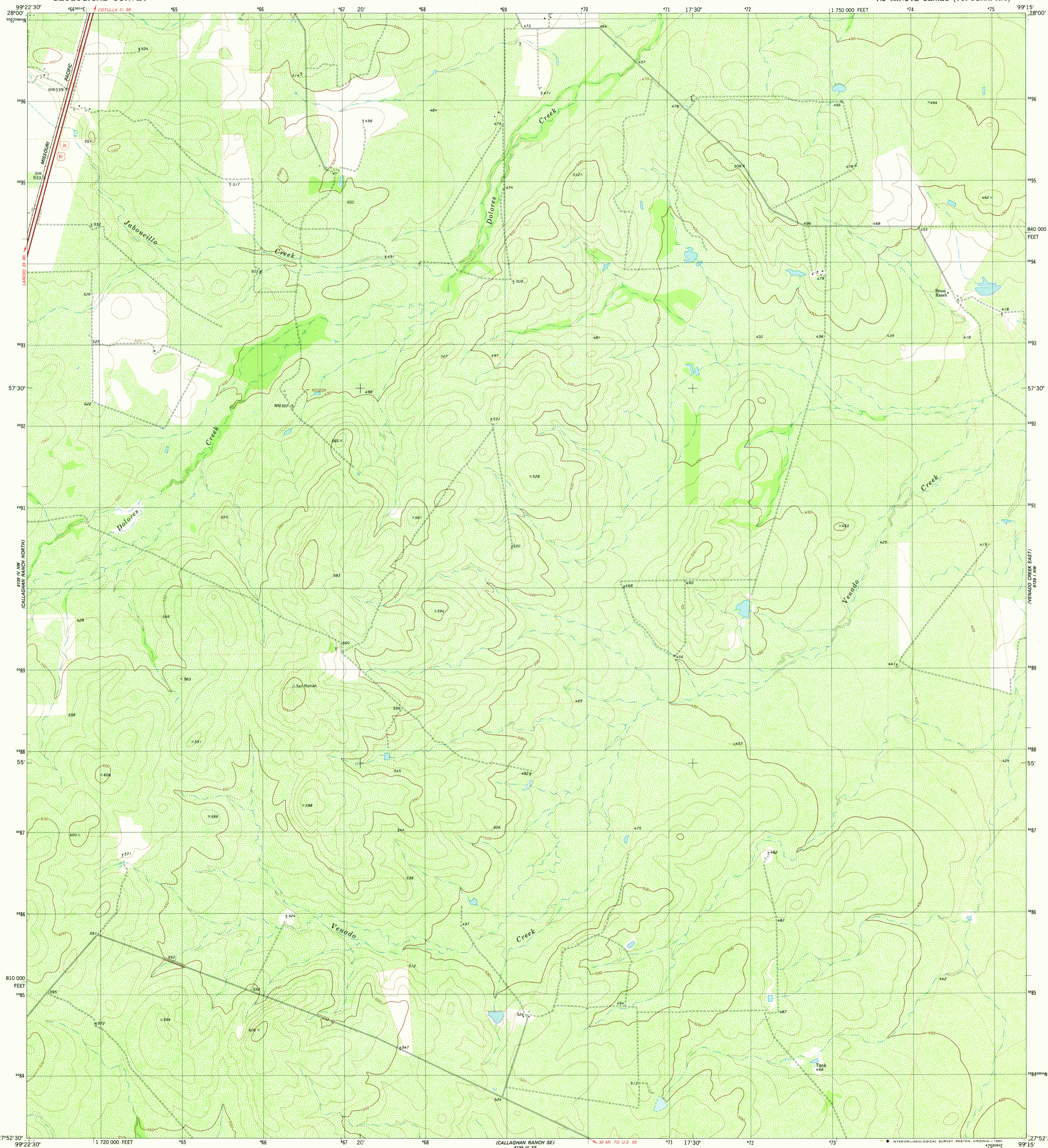
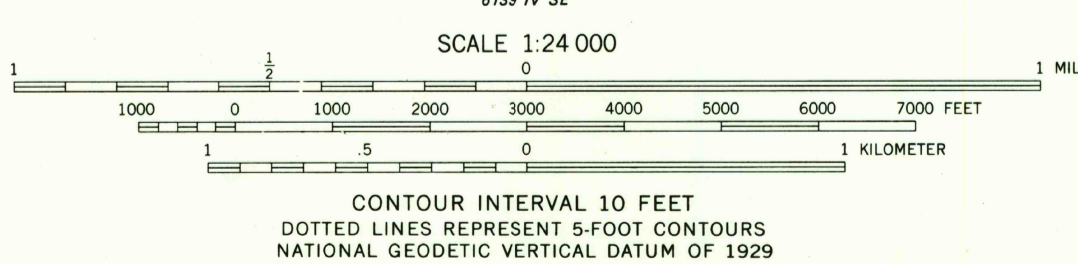
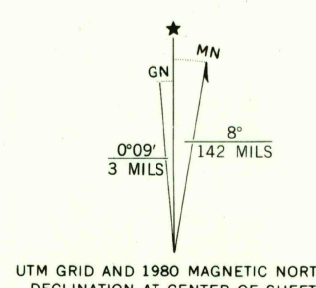


CALLAGHAN CREEK
(CALLAGHAN CREEK)



Mapped, edited, and published by the Geological Survey.
Control by USGS and NOS/NOAA
Topography by photogrammetric methods from aerial photographs taken 1974. Field checked 1975. Map edited 1980
Projection and 10,000-foot grid ticks: Texas coordinate system, south zone (Lambert conformal conic) 1000-meter Universal Transverse Mercator grid, zone 14 1927 North American datum
To place on the predicted North American Datum 1983 move the projection lines 26 meters south and 31 meters east as shown by dashed corner ticks
Fine red dashed lines indicate selected fence lines



ROAD CLASSIFICATION

Primary highway, hard surface	Light duty road, hard or improved surface
Secondary highway, hard surface	Unimproved road
Interstate Route	U. S. Route
	State Route

THIS MAP COMPLIES WITH NATIONAL MAP ACCURACY STANDARDS
FOR SALE BY U. S. GEOLOGICAL SURVEY, DENVER, COLORADO 80225, OR RESTON, VIRGINIA 22092
A FOLDER DESCRIBING TOPOGRAPHIC MAPS AND SYMBOLS IS AVAILABLE ON REQUEST

2799-434

USGS
Historical File
Topographic Division

VENADO CREEK WEST, TEX.
N2752.5-W9915/7.5
1980
DMA 6139 IV NE-SERIES V882

JAN 13 1981
2350