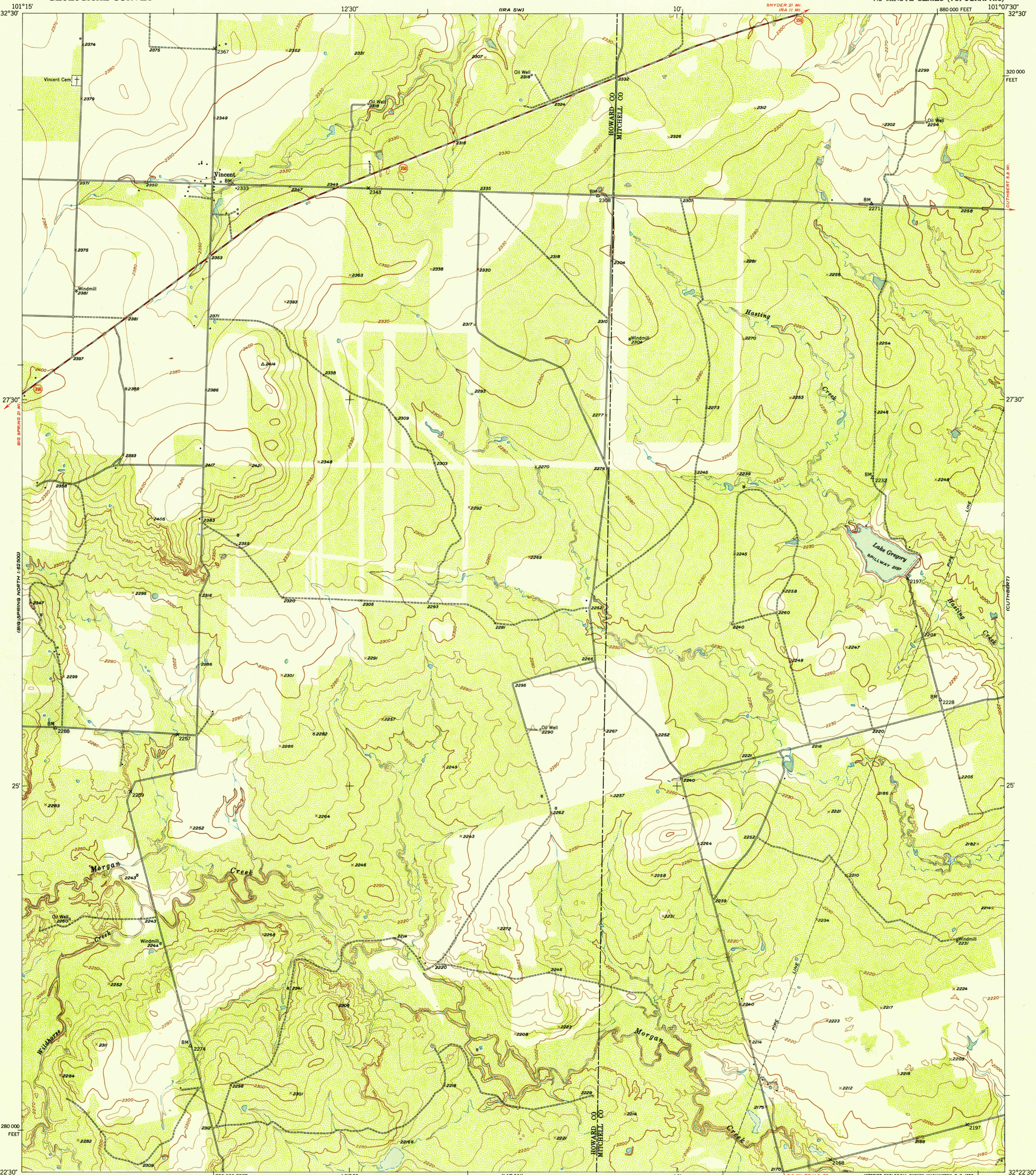
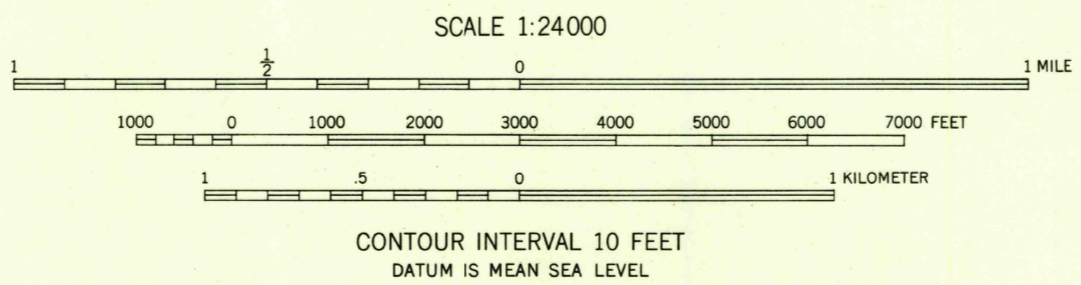


U.S.G.S.
FILE COPY
IMPROVED AND PUBLISHED



Mapped, edited, and published by the Geological Survey
Control by USGS and USC&GS
Topography from aerial photographs by multiplex methods
Aerial photographs taken 1948. Field check 1951
Polyconic projection. 1927 North American datum
10,000-foot grid based on Texas coordinate system,
north central zone

TRUE NORTH
MAGNETIC NORTH
APPROXIMATE MEAN
DECLINATION, 1951



ROAD CLASSIFICATION
Heavy-duty ——— 4 LANE 6 LANE Light-duty ———
Medium-duty ——— 2 LANE 4 LANE Unimproved dirt ———
U. S. Route (red shield) Slate Route (red circle)



U.S.G.S.
FILE COPY
IMPROVED AND PUBLISHED

VINCENT, TEX.
N3222.5-W10107.5/7.5
1951