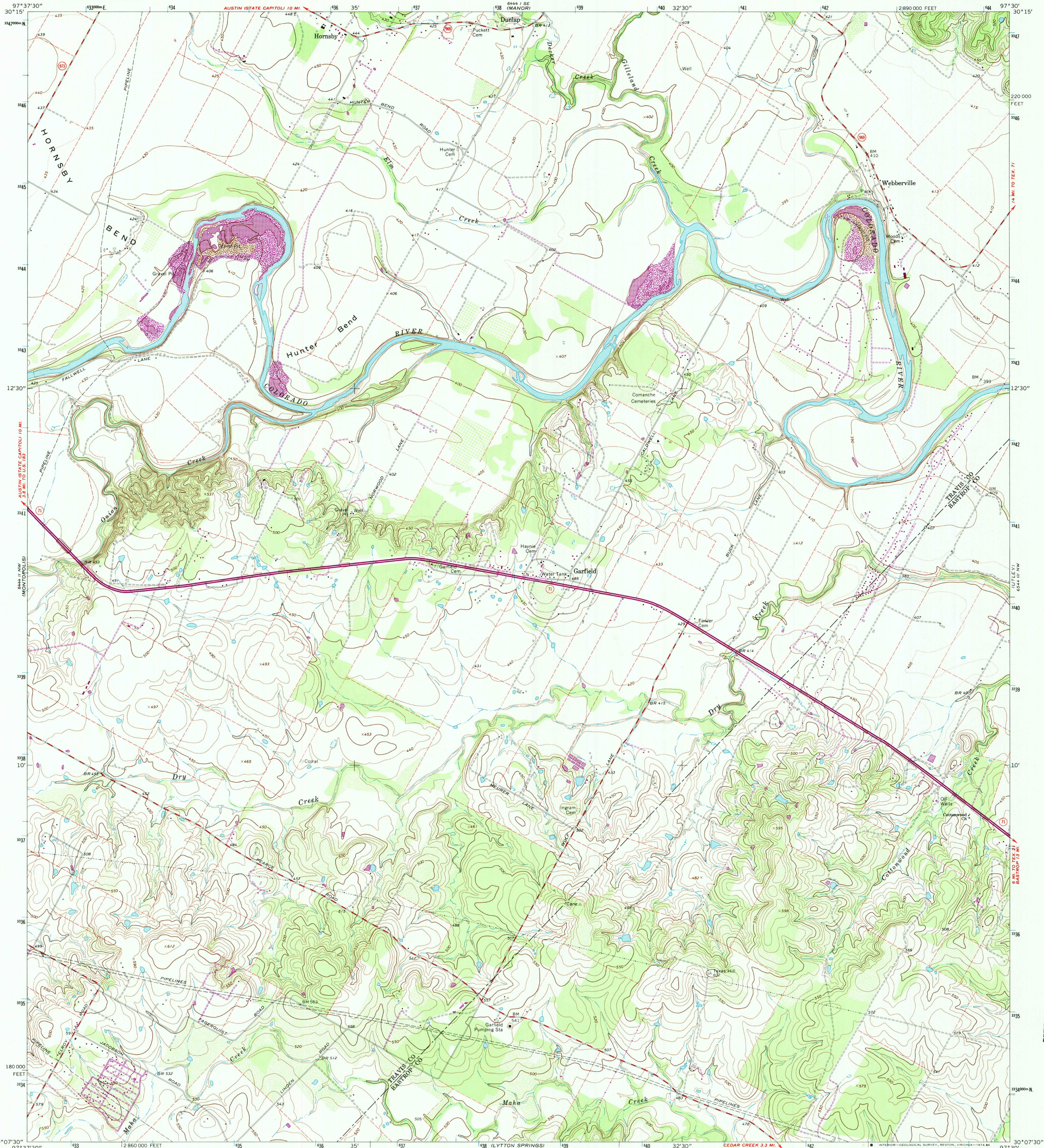


UNITED STATES  
DEPARTMENT OF THE INTERIOR  
GEOLOGICAL SURVEY

WEBBERVILLE QUADRANGLE  
TEXAS  
7.5 MINUTE SERIES (TOPOGRAPHIC)  
NE/4 MONTROPOLIS 15' QUADRANGLE



Mapped, edited, and published by the Geological Survey

Control by USGS and USC&GS

Topography by photogrammetric methods from aerial

photographs taken 1967. Field checked 1968

Polyconic projection. 1927 North American datum

10,000-foot grid based on Texas coordinate system,

central zone

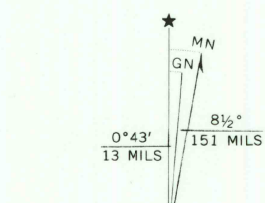
1000-meter Universal Transverse Mercator grid ticks,

zone 14, shown in blue

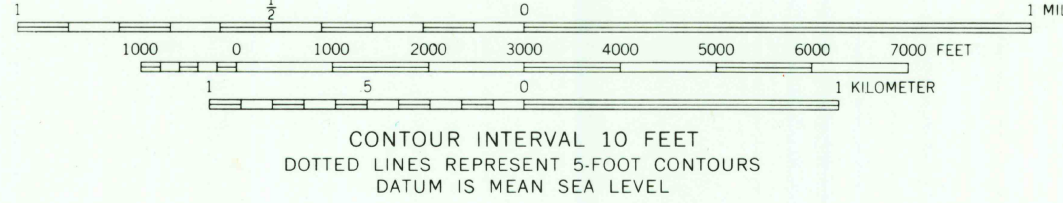
Fine red dashed lines indicate selected fence lines

Revisions shown in purple compiled from aerial photographs

taken 1973. This information not field checked



UTM GRID AND 1973 MAGNETIC NORTH  
DECLINATION AT CENTER OF SHEET



THIS MAP COMPLIES WITH NATIONAL MAP ACCURACY STANDARDS  
FOR SALE BY U.S. GEOLOGICAL SURVEY, DENVER, COLORADO 80225, OR RESTON, VIRGINIA 22092  
A FOLDER DESCRIBING TOPOGRAPHIC MAPS AND SYMBOLS IS AVAILABLE ON REQUEST



QUADRANGLE LOCATION

ROAD CLASSIFICATION	
Primary highway, hard surface	Light-duty road, hard or improved surface
Secondary highway, hard surface	Unimproved road
Interstate Route	U. S. Route
	State Route

WEBBERVILLE, TEX.  
NE/4 MONTROPOLIS 15' QUADRANGLE  
N3007.5—W9730/7.5

1968  
PHOTOREVISED 1973  
AMS 6444 II NE—SERIES V882

RETURN TO:  
USGS AND HISTORICAL MAP ARCHIVES