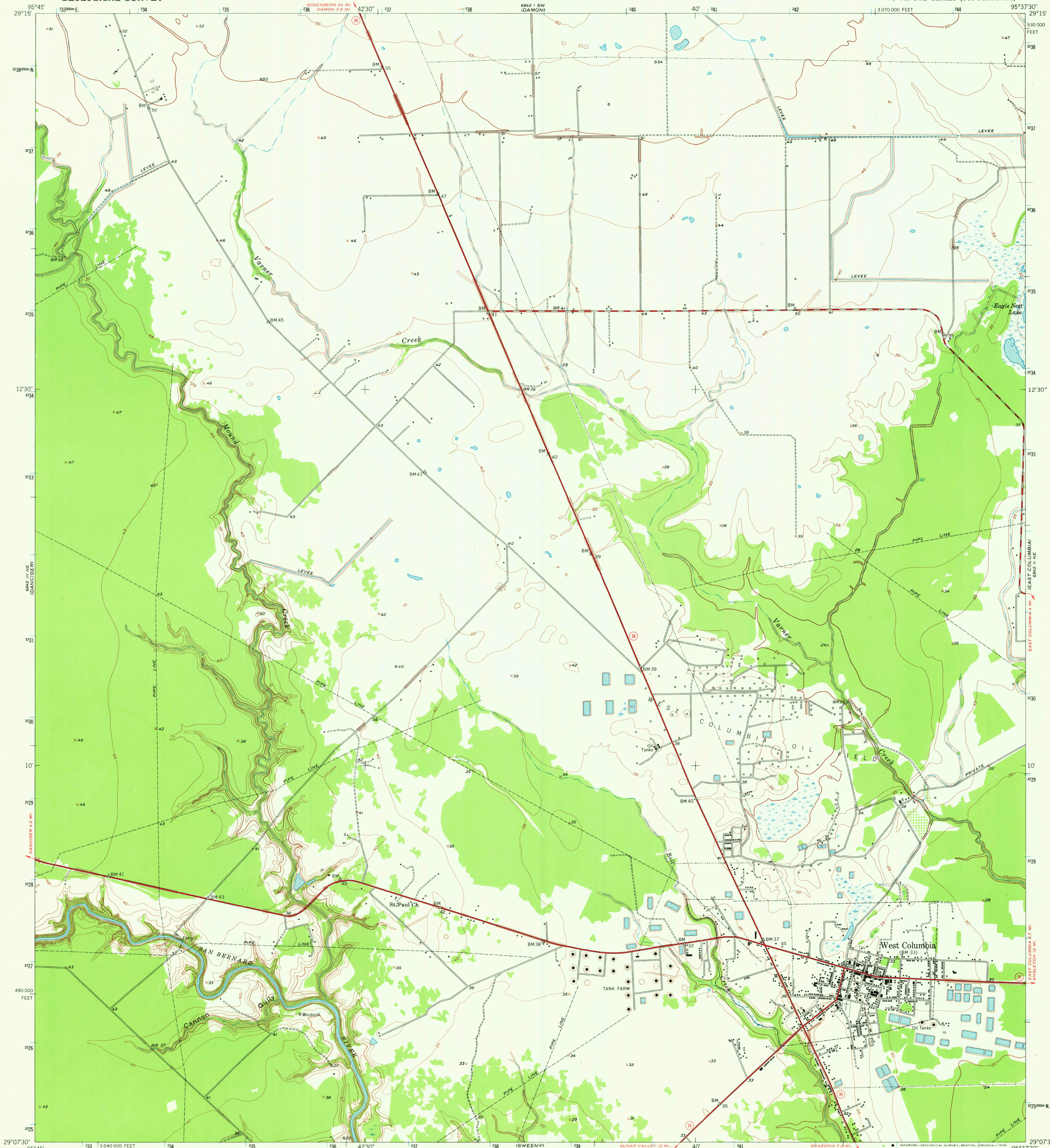


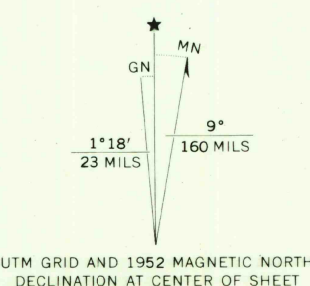
6842 11 SE  
6842 11 SE  
(NOTED)

UNITED STATES  
DEPARTMENT OF THE INTERIOR  
GEOLOGICAL SURVEY

WEST COLUMBIA QUADRANGLE  
TEXAS-BRAZORIA CO.  
7.5 MINUTE SERIES (TOPOGRAPHIC)



Maped, edited, and published by the Geological Survey  
Control by USGS and USC&GS  
Culture and drainage in part compiled from aerial photographs  
taken 1946-1947. Topography by plane-table surveys 1951-1952  
Polyconic projection. 1927 North American datum  
10,000-foot grid based on Texas coordinate system,  
south central zone  
1000-metre Universal Transverse Mercator grid ticks,  
zone 15, shown in blue



SCALE 1:24,000  
1000 0 1000 2000 3000 4000 5000 6000 7000 FEET  
1 KILOMETRE  
CONTOUR INTERVAL 5 FEET  
NATIONAL GEODETIC VERTICAL DATUM OF 1929

THIS MAP COMPLIES WITH NATIONAL MAP ACCURACY STANDARDS  
FOR SALE BY U. S. GEOLOGICAL SURVEY, DENVER, COLORADO 80225, OR RESTON, VIRGINIA 22092  
A FOLDER DESCRIBING TOPOGRAPHIC MAPS AND SYMBOLS IS AVAILABLE ON REQUEST



ROAD CLASSIFICATION  
Heavy-duty ——— 4 LANE 6 LANE Light-duty ———  
Medium-duty ——— 4 LANE 6 LANE Unimproved dirt ———  
U. S. Route State Route

USGS  
Historical File  
Topographic Division

WEST COLUMBIA, TEX.  
N2907.5-W9537.5/7.5

1952  
AMS 6842 11 NW-SERIES V882

SEP 09 1976