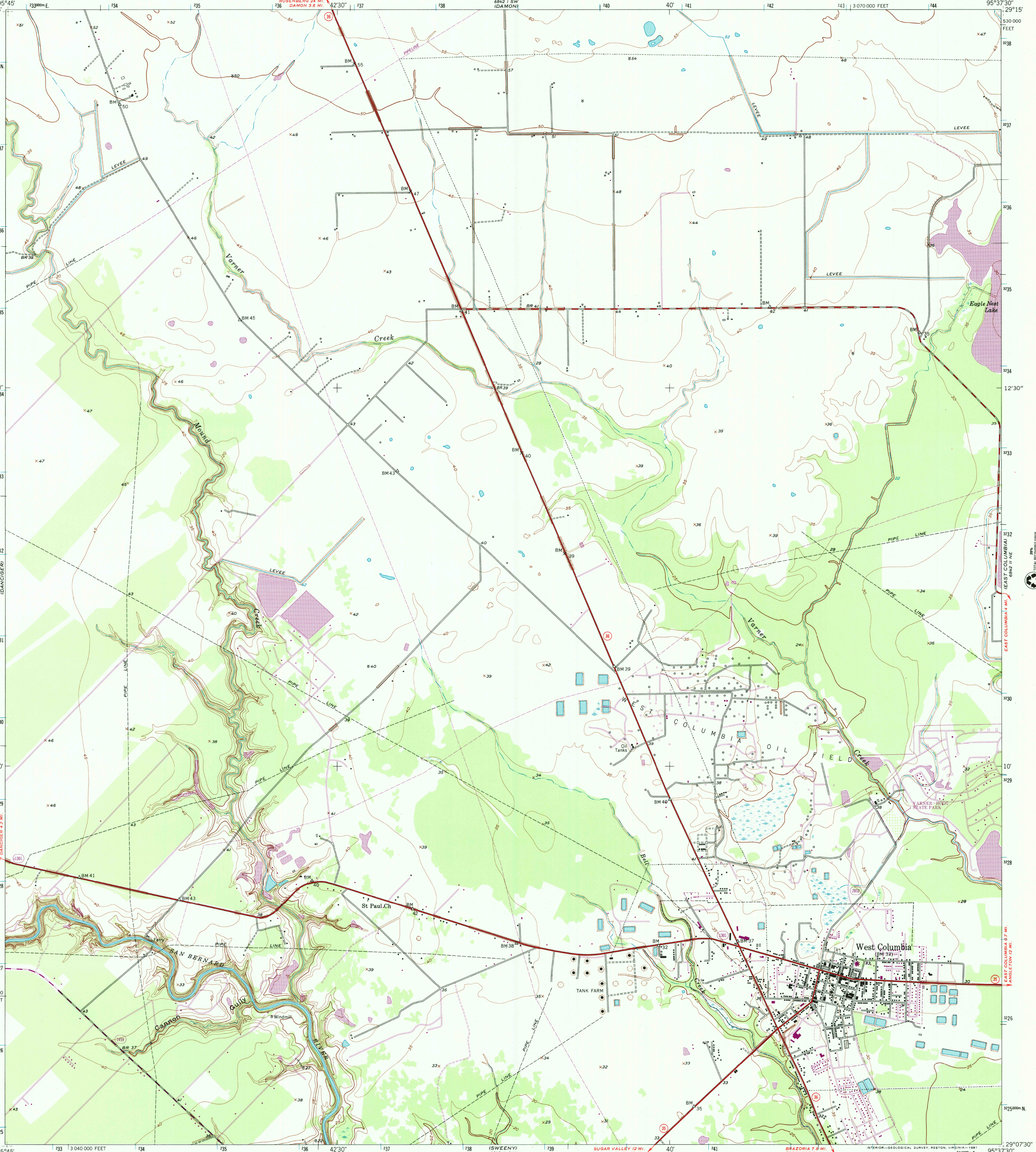


95°45' 29°15' 3300000 N
337 336 335 334 333 332 331 330 329 328 327 326 325
333 334 335 336 337 338 339 340 341 342 343 344 345
12°30' 10' 8' 6' 4' 2' 0' 29°07'30"



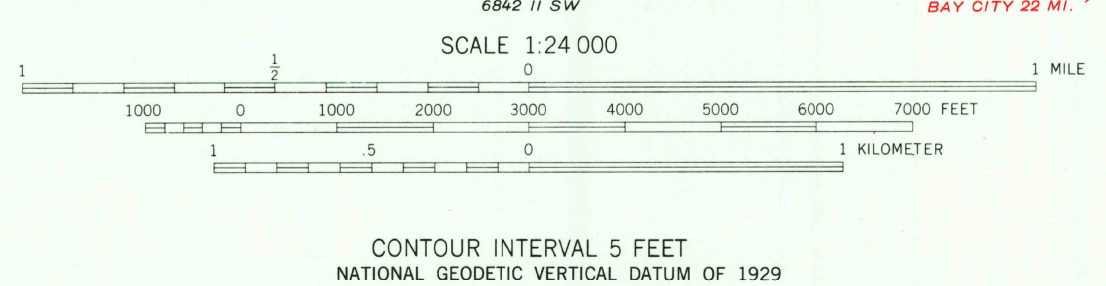
U.S. DEPARTMENT OF THE INTERIOR
U.S. GEOLOGICAL SURVEY

WEST COLUMBIA QUADRANGLE
TEXAS-BRAZORIA CO.
7.5 MINUTE SERIES (TOPOGRAPHIC)



Mapped, edited, and published by the Geological Survey
Control by USGS and NOS/NOAA
Culture and drainage in part compiled from aerial photographs taken 1946-1947. Topography by plane-table surveys 1951-1952
Polyconic projection. 1927 North American datum 10,000-foot grid based on Texas coordinate system, south central zone
1000-meter Universal Transverse Mercator grid ticks, zone 15, shown in blue
To place on the predicted North American Datum 1983 move the projection lines 22 meters south and 23 meters east as shown by dashed corner ticks
Revisions shown in purple and woodland compiled from aerial photographs taken 1977 and other source data. This information not field checked. Map edited 1980

UTM GRID AND 1980 MAGNETIC NORTH DECLINATION AT CENTER OF SHEET
111° 23 MILS
64° 116 MILS
There may be private inholdings within the boundaries of the National or State reservations shown on this map



THIS MAP COMPLIES WITH NATIONAL MAP ACCURACY STANDARDS
FOR SALE BY U.S. GEOLOGICAL SURVEY, P.O. BOX 25286, DENVER, COLORADO 80225
A FOLDER DESCRIBING TOPOGRAPHIC MAPS AND SYMBOLS IS AVAILABLE ON REQUEST



ROAD CLASSIFICATION
Heavy-duty 4 LANE 12 LANE Light-duty
Medium-duty 4 LANE 12 LANE Unimproved dirt
U.S. Route State Route

RECEIVED
AUG 31 2001
WEST COLUMBIA, TEX.
N 2907.5 - W 9537.5 / 7.5
1952
PHOTOREVISED 1980
DMA 6842 II NW - SERIES V882

2995-213
HISTORICALMAPARCHIVES

ISBN 0-607-53278-5
9 780607 532784