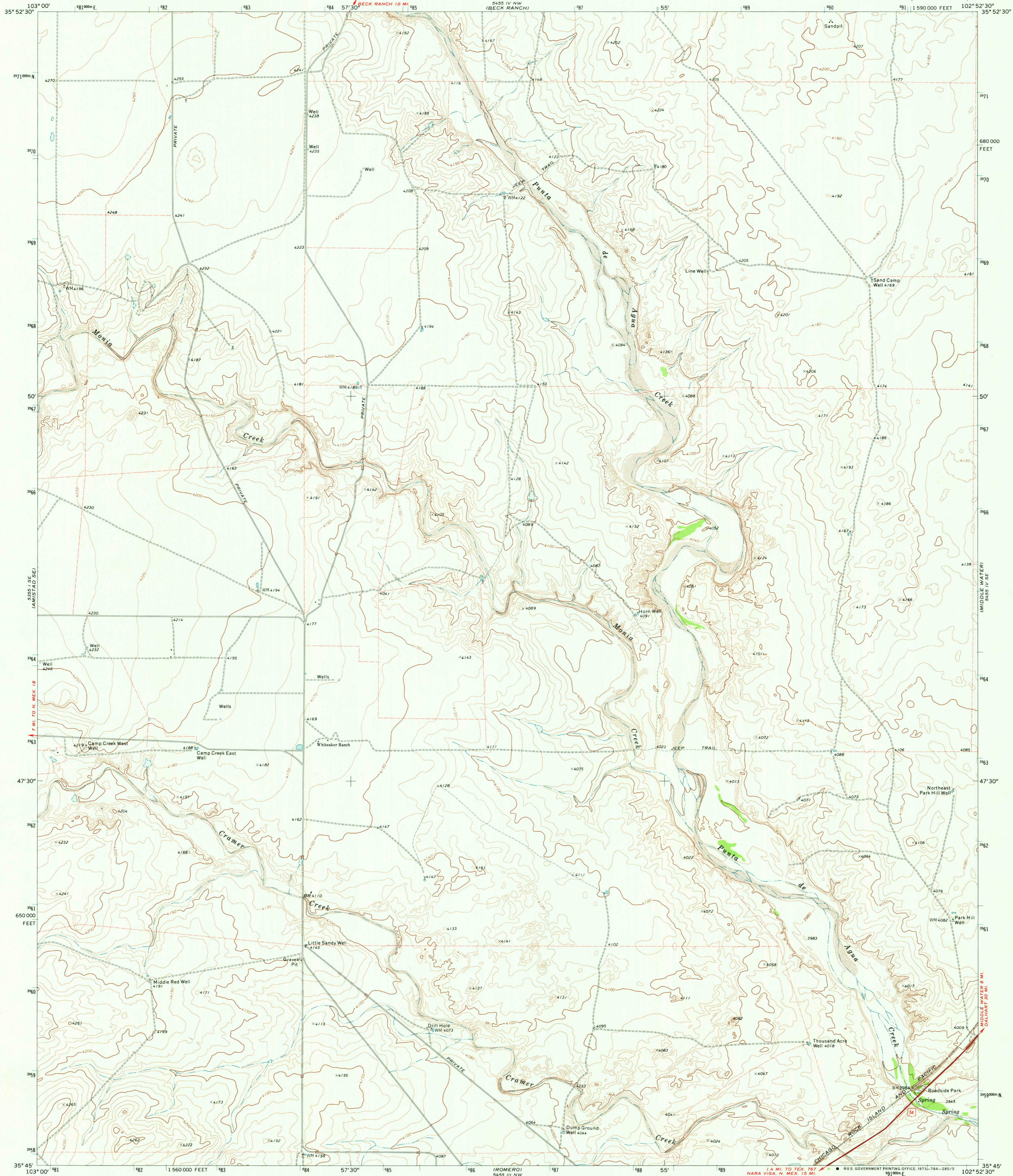


525' 1/4" NE (MOBER RANCH)

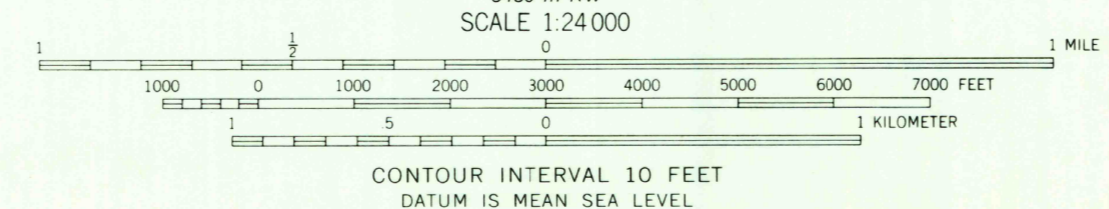
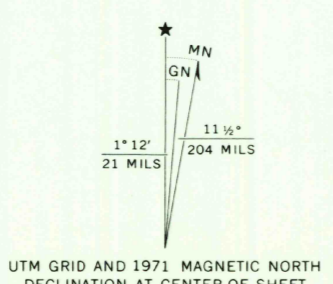
525' 1/4" NE (SYNDICATE HILLS)

UNITED STATES DEPARTMENT OF THE INTERIOR GEOLOGICAL SURVEY

WHITEAKER RANCH QUADRANGLE TEXAS-HARTLEY CO. 7.5 MINUTE SERIES (TOPOGRAPHIC)



Mapped, edited, and published by the Geological Survey Control by USGS and USC&GS Topography by photogrammetric methods from aerial photographs taken 1967. Field checked 1971 Polyconic projection. 1927 North American datum 10,000-foot grid based on Texas coordinate system, north zone 1000-meter Universal Transverse Mercator grid ticks, zone 13, shown in blue Fine red dashed lines indicate selected fence lines



ROAD CLASSIFICATION table with symbols for Primary highway, Secondary highway, Interstate Route, U.S. Route, State Route, Light-duty road, and Unimproved road.

THIS MAP COMPLIES WITH NATIONAL MAP ACCURACY STANDARDS FOR SALE BY U. S. GEOLOGICAL SURVEY, DENVER, COLORADO 80225, OR WASHINGTON, D. C. 20242 A FOLDER DESCRIBING TOPOGRAPHIC MAPS AND SYMBOLS IS AVAILABLE ON REQUEST

WHITEAKER RANCH, TEX. N3545-W10252.5/7.5

Handwritten notes: NOV 7 1973, Ranger, 2500, 50/50

1971 AMS 5455 IV SW-SERIES V882