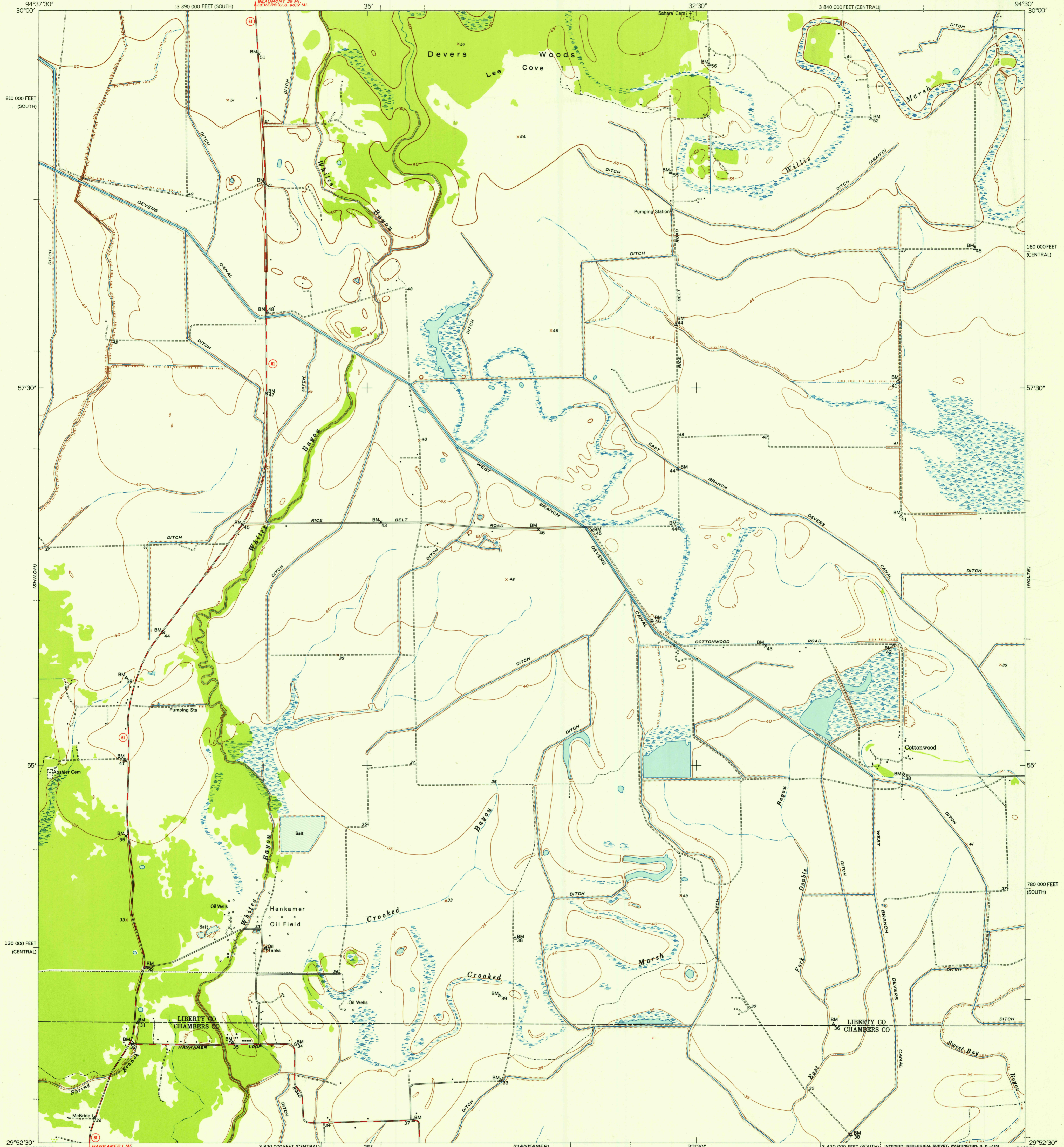


FILE COPY  
Inspection and Editing.

UNITED STATES  
DEPARTMENT OF THE INTERIOR  
GEOLOGICAL SURVEY

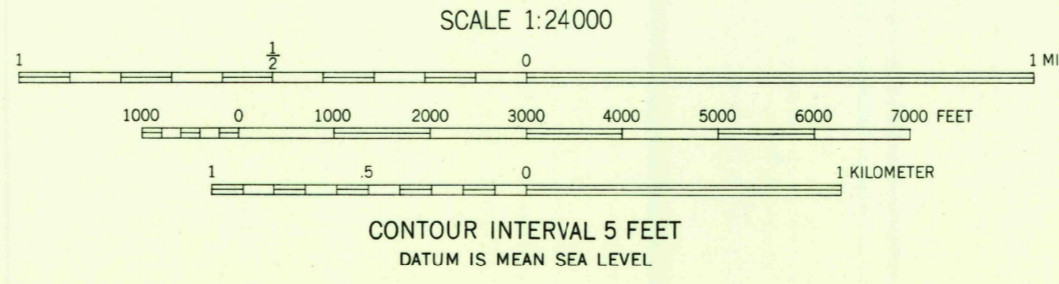
UNITED STATES  
DEPARTMENT OF THE ARMY  
CORPS OF ENGINEERS

WHITES BAYOU QUADRANGLE  
TEXAS  
7.5 MINUTE SERIES (TOPOGRAPHIC)



Maped by the Army Map Service  
Edited and published by the Geological Survey  
Control by USC&GS, TVA, and Texas Reclamation Department  
Culture and drainage in part compiled from  
aerial photographs by multiplex methods 1943  
Topography by plane-table surveys 1943  
Aerial photographs taken 1942  
Polyconic projection, 1927 North American datum  
10,000-foot grid based on Texas coordinate system,  
central and south zones

TRUE NORTH  
MAGNETIC NORTH  
APPROXIMATE MEAN  
DECLINATION, 1943



ROAD CLASSIFICATION  
Heavy-duty 4 LANE 16 LANE Light-duty  
Medium-duty 4 LANE 16 LANE Unimproved dirt  
U.S. Route State Route

THIS MAP COMPLIES WITH NATIONAL MAP ACCURACY STANDARDS  
FOR SALE BY U. S. GEOLOGICAL SURVEY, FEDERAL CENTER, DENVER, COLORADO OR WASHINGTON 25, D. C.  
A FOLDER DESCRIBING TOPOGRAPHIC MAPS AND SYMBOLS IS AVAILABLE ON REQUEST

U. S. G. S.  
FILE COPY  
Inspection and Editing.

WHITES BAYOU, TEX.  
N2952.5-W9430/7.5  
1943  
MINOR CORRECTIONS MADE 1952

NOV 5 1952