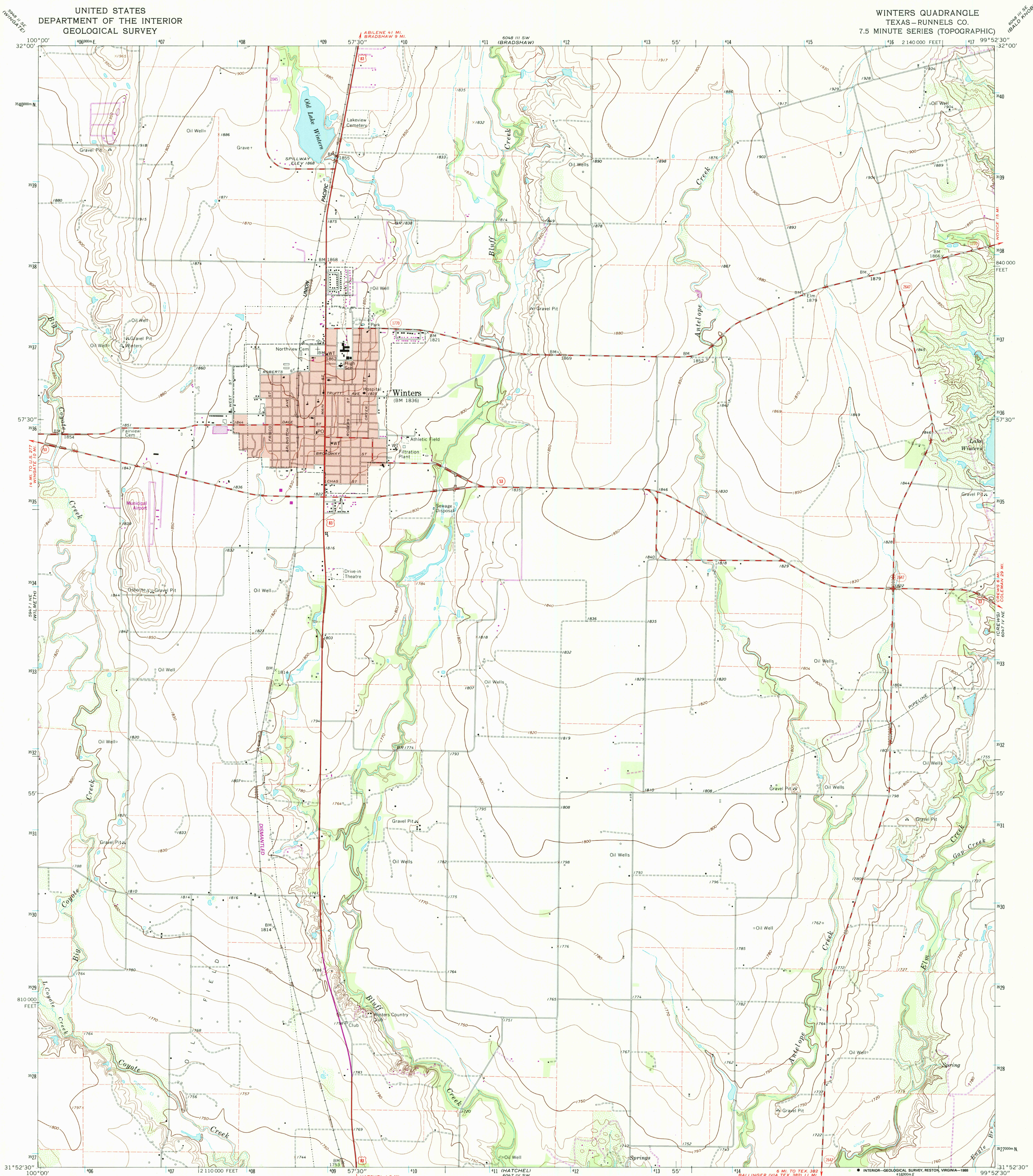
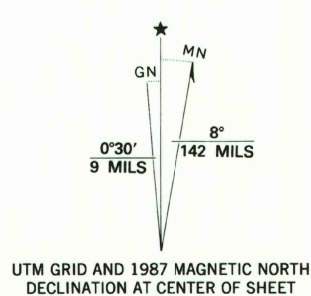


UNITED STATES
DEPARTMENT OF THE INTERIOR
GEOLOGICAL SURVEY

WINTERS QUADRANGLE
TEXAS—RUNNELS CO.
7.5 MINUTE SERIES (TOPOGRAPHIC)



Maped, edited, and published by the Geological Survey
Control by USGS and USC&GS
Topography by photogrammetric methods from aerial
photographs taken 1966. Field checked 1967
Polyconic projection. 1927 North American Datum
10,000-foot grid based on Texas coordinate system,
central zone
1000-meter Universal Transverse Mercator grid ticks,
zone 14, shown in blue
Red tint indicates areas in which only landmark buildings are shown
To place on the predicted North American Datum 1983,
move the projection lines 11 meters south and
34 meters east as shown by dashed corner ticks
Revisions shown in purple compiled from aerial photographs taken 1983 and
other sources. This information not field checked. Map edited 1987

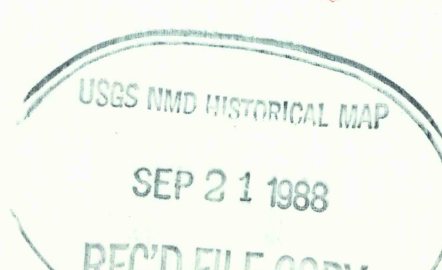


THIS MAP COMPLIES WITH NATIONAL MAP ACCURACY STANDARDS
FOR SALE BY U. S. GEOLOGICAL SURVEY, DENVER, COLORADO 80225, OR RESTON, VIRGINIA 22092
A FOLDER DESCRIBING TOPOGRAPHIC MAPS AND SYMBOLS IS AVAILABLE ON REQUEST



QUADRANGLE LOCATION

ROAD CLASSIFICATION
Heavy-duty ——— Light-duty ———
Medium-duty ——— Unimproved dirt ———
U.S. Route ——— State Route ———



WINTERS, TEX.
31099-H8-TF-024

1967
PHOTOREVISED 1987
DMA 6047 IV NW-SERIES V882