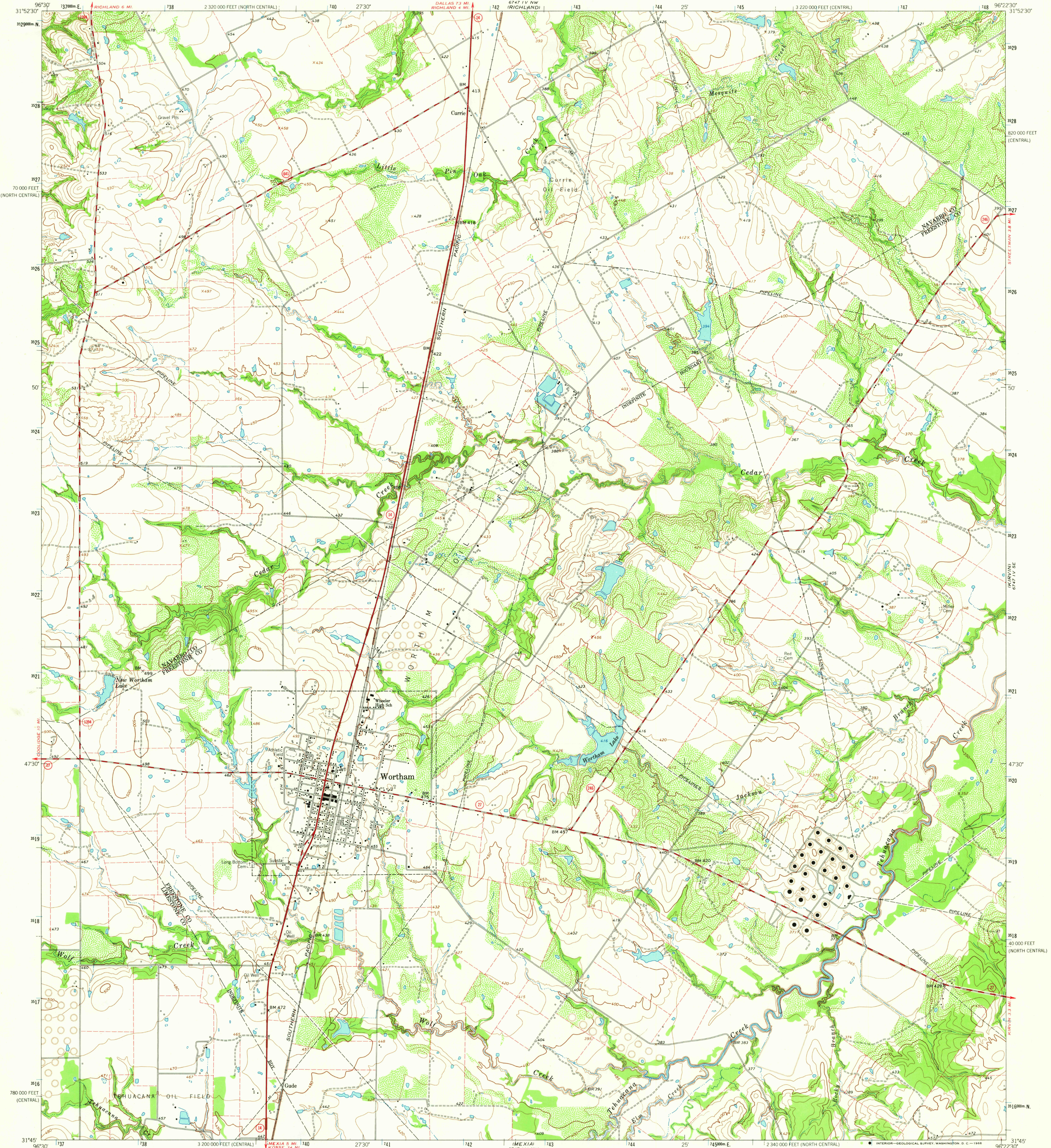
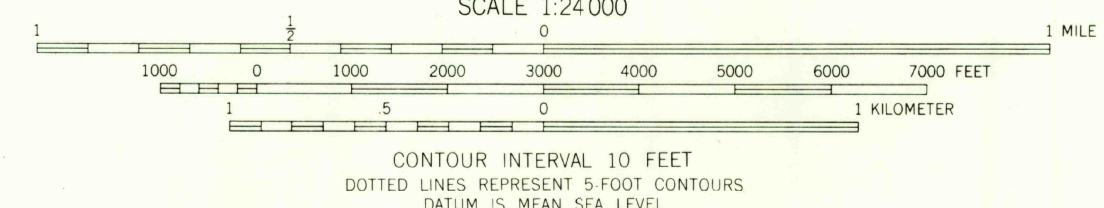
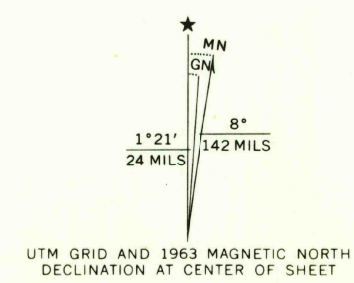


67° 14' W.  
(STREET MAP)



Mapped, edited, and published by the Geological Survey  
Control by USGS and USC&GS  
Topography by photogrammetric methods from aerial photographs taken 1962. Field checked 1963.  
Polyconic projection. 1927 North American datum. 10,000-foot grids based on Texas coordinate system, central and north central zones.  
1000-meter Universal Transverse Mercator grid ticks, zone 14, shown in blue.  
Fine red dashed lines indicate selected fence lines.



CONTOUR INTERVAL 10 FEET  
DOTTED LINES REPRESENT 5-FOOT CONTOURS  
DATUM IS MEAN SEA LEVEL

ROAD CLASSIFICATION

Heavy-duty	Light-duty
Medium-duty	Unimproved dirt
State Route	



THIS MAP COMPLIES WITH NATIONAL MAP ACCURACY STANDARDS  
FOR SALE BY U.S. GEOLOGICAL SURVEY, DENVER, COLORADO 80225, OR WASHINGTON, D. C. 20242  
A FOLDER DESCRIBING TOPOGRAPHIC MAPS AND SYMBOLS IS AVAILABLE ON REQUEST

U.S.G.S.  
FILE COPY  
TOPOGRAPHIC DIVISION

WORTHAM, TEX.  
N3145-W9622.5/7.5  
1963

2710  
MAR 3 1968

AMS 6747 IV SW - SERIES V882