

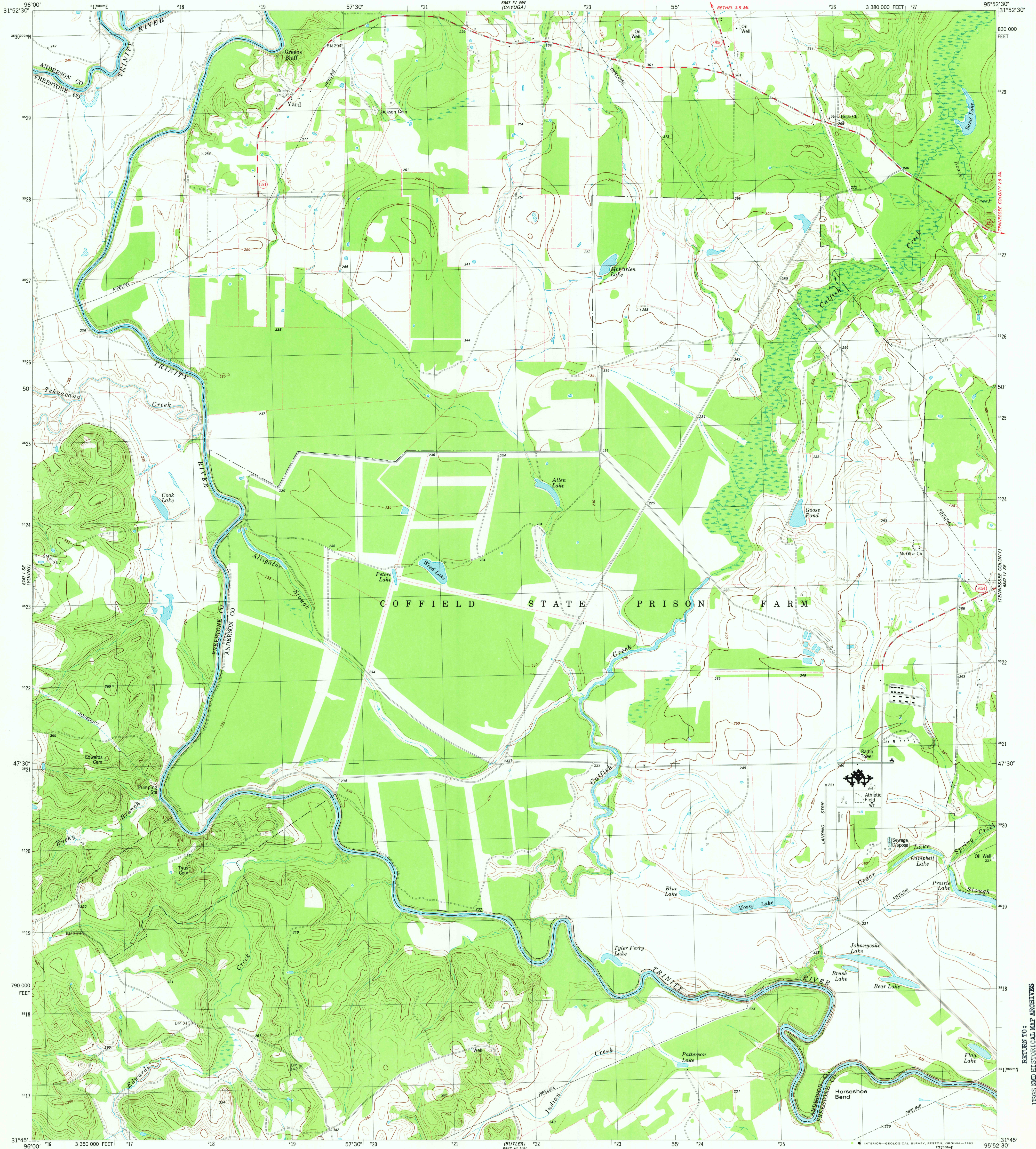
6847 IV SW
100' BY 100'

UNITED STATES
DEPARTMENT OF THE INTERIOR
GEOLOGICAL SURVEY

STATE OF TEXAS
TEXAS DEPARTMENT OF WATER RESOURCES

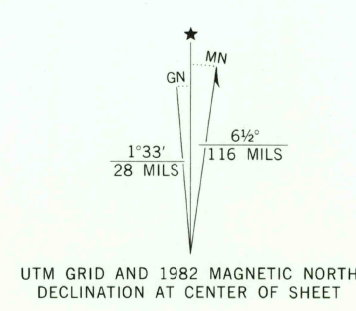
YARD QUADRANGLE
TEXAS
7.5 MINUTE SERIES (TOPOGRAPHIC)
SW/4 TENNESSEE COLONY 15' QUADRANGLE

6847 IV SW
100' BY 100'



Mapped, edited, and published by the Geological Survey

Control by USGS and NOS/NOAA
Topography by photogrammetric methods from aerial photographs taken 1976. Field checked 1977. Map edited 1982
Projection and 10,000-foot grid ticks: Texas coordinate system, central zone (Lambert conformal conic) 1000-meter Universal Transverse Mercator grid, zone 15 1927 North American datum
To place on the predicted North American Datum 1983 move the projection lines 1.4 meters south and 24 meters east as shown by dashed corner ticks
Fine red dashed lines indicate selected fence lines
There may be private inholdings within the boundaries of the National or State reservations shown on this map



THIS MAP COMPLIES WITH NATIONAL MAP ACCURACY STANDARDS
FOR SALE BY U. S. GEOLOGICAL SURVEY, DENVER, COLORADO 80225, OR RESTON, VIRGINIA 22092
A FOLDER DESCRIBING TOPOGRAPHIC MAPS AND SYMBOLS IS AVAILABLE ON REQUEST



3195-332

ROAD CLASSIFICATION
Primary highway, hard surface
Secondary highway, hard surface
Unimproved road
Interstate Route
U. S. Route
State Route
Light-duty road, hard or improved surface
Unimproved road

YARD, TEX.
SW/4 TENNESSEE COLONY 15' QUADRANGLE
N3145-W9552.5/7.5

1982
DMA 6847 IV SW-SERIES V882

RETURN TO:
USGS AND HISTORICAL MAP ARCHIVES

DEC 29 1982

2002