

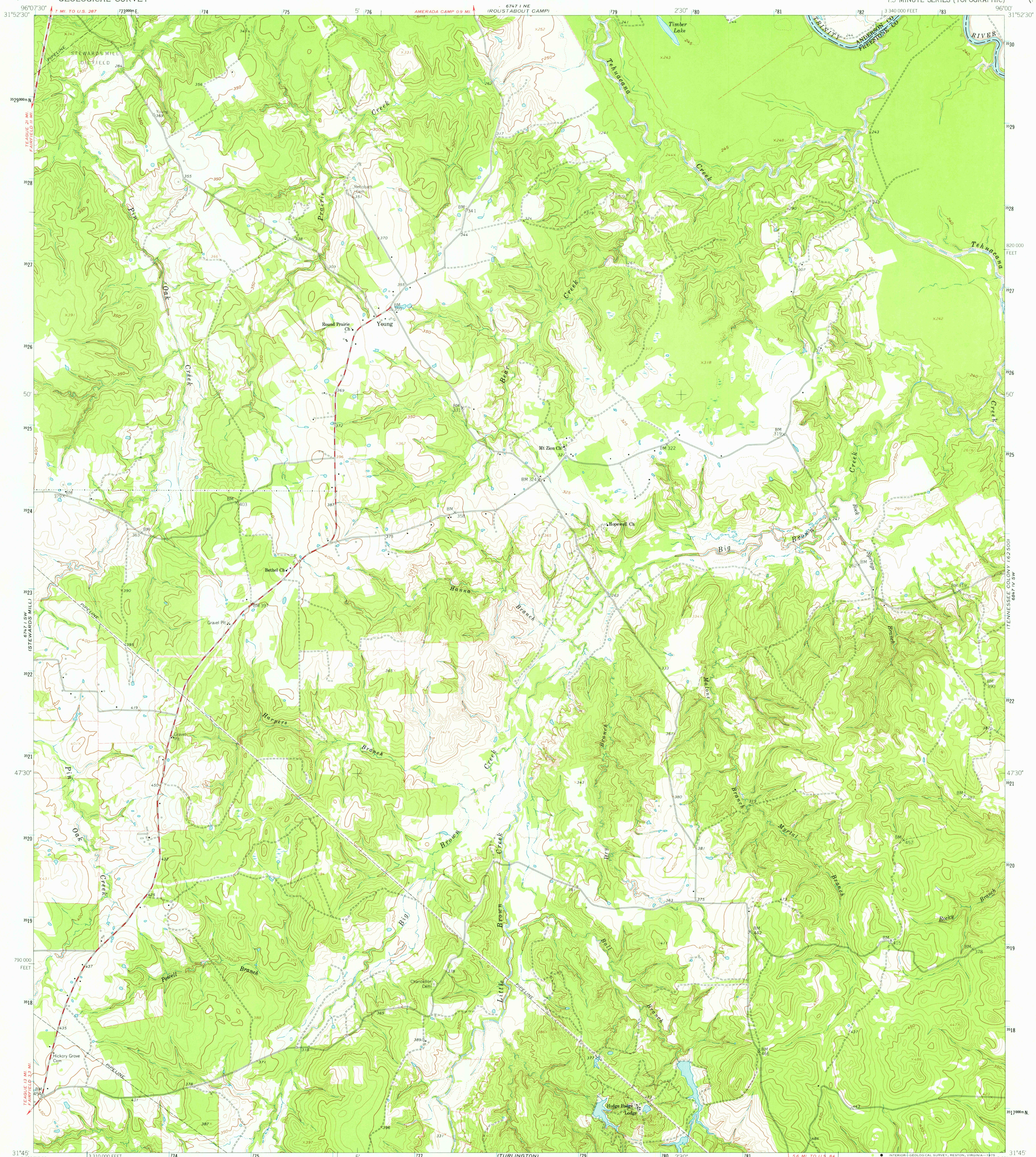
6747 1 SE
31°52'30"

UNITED STATES
DEPARTMENT OF THE INTERIOR
GEOLOGICAL SURVEY

STATE OF TEXAS
TEXAS WATER COMMISSION

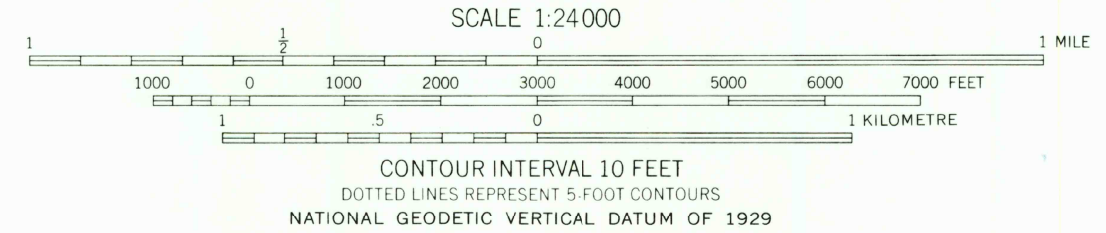
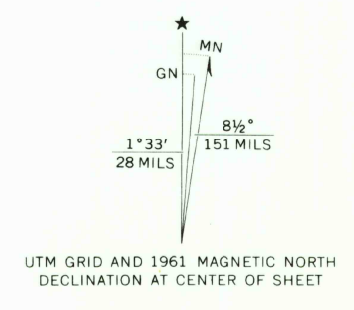
YOUNG QUADRANGLE
TEXAS
7.5 MINUTE SERIES (TOPOGRAPHIC)

6747 1 SE
31°52'30"



6747 1 SE
31°52'30"

Mapped, edited, and published by the Geological Survey
Control by USGS and USC&GS
Topography by photogrammetric methods from aerial
photographs taken 1958. Field checked 1961
Polyconic projection: 1927 North American datum
10,000 foot grid based on Texas coordinate system,
central zone
1000 metre Universal Transverse Mercator grid ticks,
zone 14, shown in blue
Fine red dashed lines indicate selected fence and field lines
where generally visible on aerial photographs
This information is unchecked



ROAD CLASSIFICATION
Medium-duty ——— Light-duty ———
Unimproved dirt - - - - -

THIS MAP COMPLIES WITH NATIONAL MAP ACCURACY STANDARDS
FOR SALE BY U. S. GEOLOGICAL SURVEY, DENVER, COLORADO 80225, OR RESTON, VIRGINIA 22092
A FOLDER DESCRIBING TOPOGRAPHIC MAPS AND SYMBOLS IS AVAILABLE ON REQUEST

USGS
HISTORICAL FILE
TOPOGRAPHIC DIVISION

JAN 12 1976
YOUNG, TEX.
N3145 - W9600/75
1961
AMS 6747 1 SE - SERIES V882