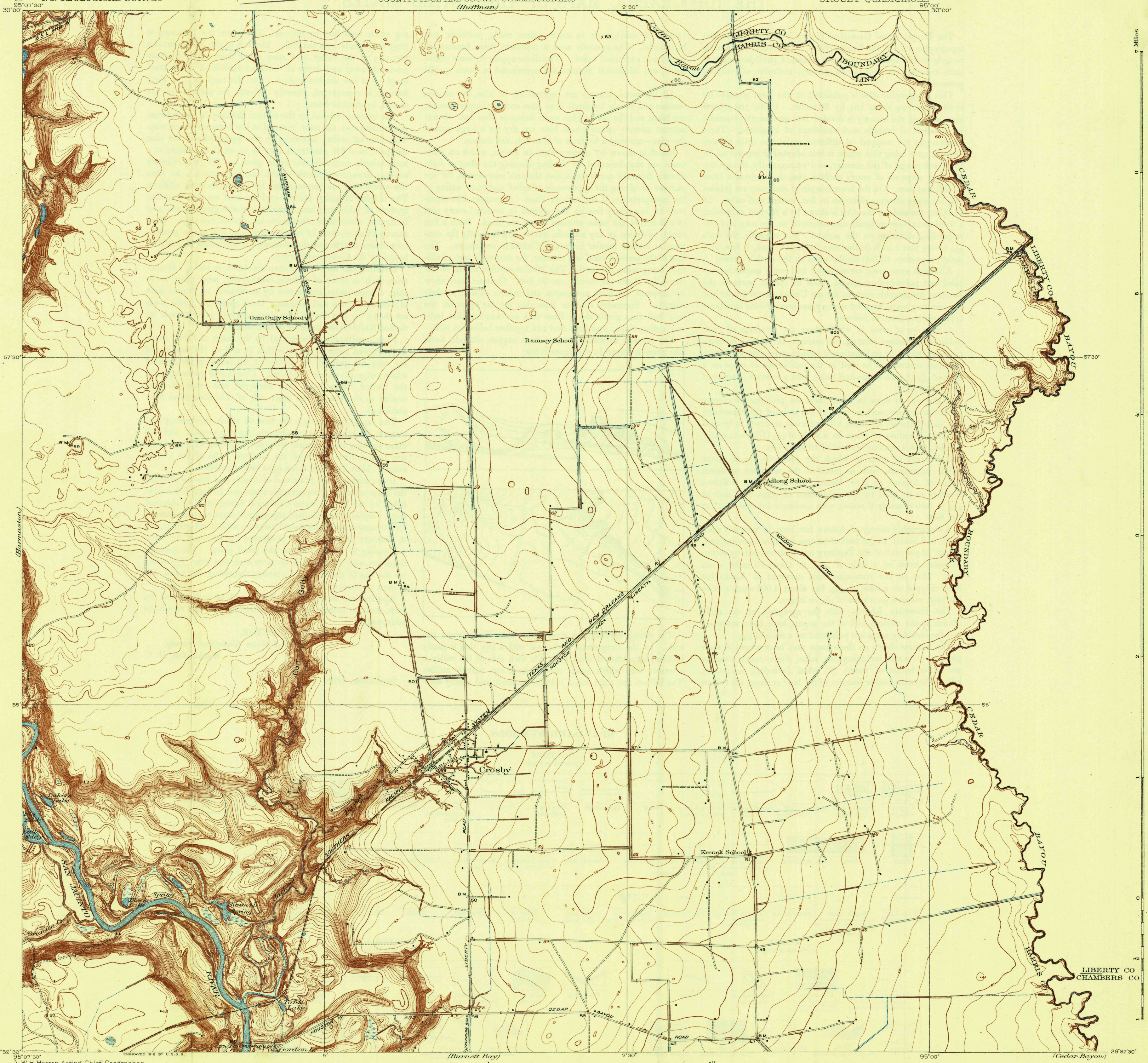


U. S. G. S.
FILE COPY
Inspection and Editing.

DEPARTMENT OF THE INTERIOR
U. S. GEOLOGICAL SURVEY

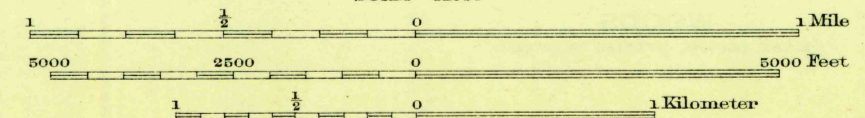
HARRIS COUNTY TEXAS
REPRESENTED BY THE
COUNTY JUDGE AND COUNTY COMMISSIONERS
(Huffman)

TEXAS
(HARRIS COUNTY)
CROSBY QUADRANGLE



W. H. Herron, Acting Chief Geographer.
C. H. Birdseye, Topographic Engineer in charge.
Topography by E. A. Jenkins, H. W. Peabody,
F. A. Danforth, C. C. Holder, D. H. Watson, and L. B. Roberts.
Control by E. L. McNair and D. S. Birckett.
Surveyed in 1916.

DHW	GDH
HWP	BAJ
FAD	



Contour interval 1 foot.
Datum is mean sea level.

TRUE NORTH
APPROXIMATE MEAN
DECLINATION, 1916

U. S. G. S.
FILE COPY
Inspection and Editing.

Edition of 1919 reprinted 1932
Polyconic projection, North American datum

AUG 26 1932 (2045)

TEX.
CROSBY

2045