

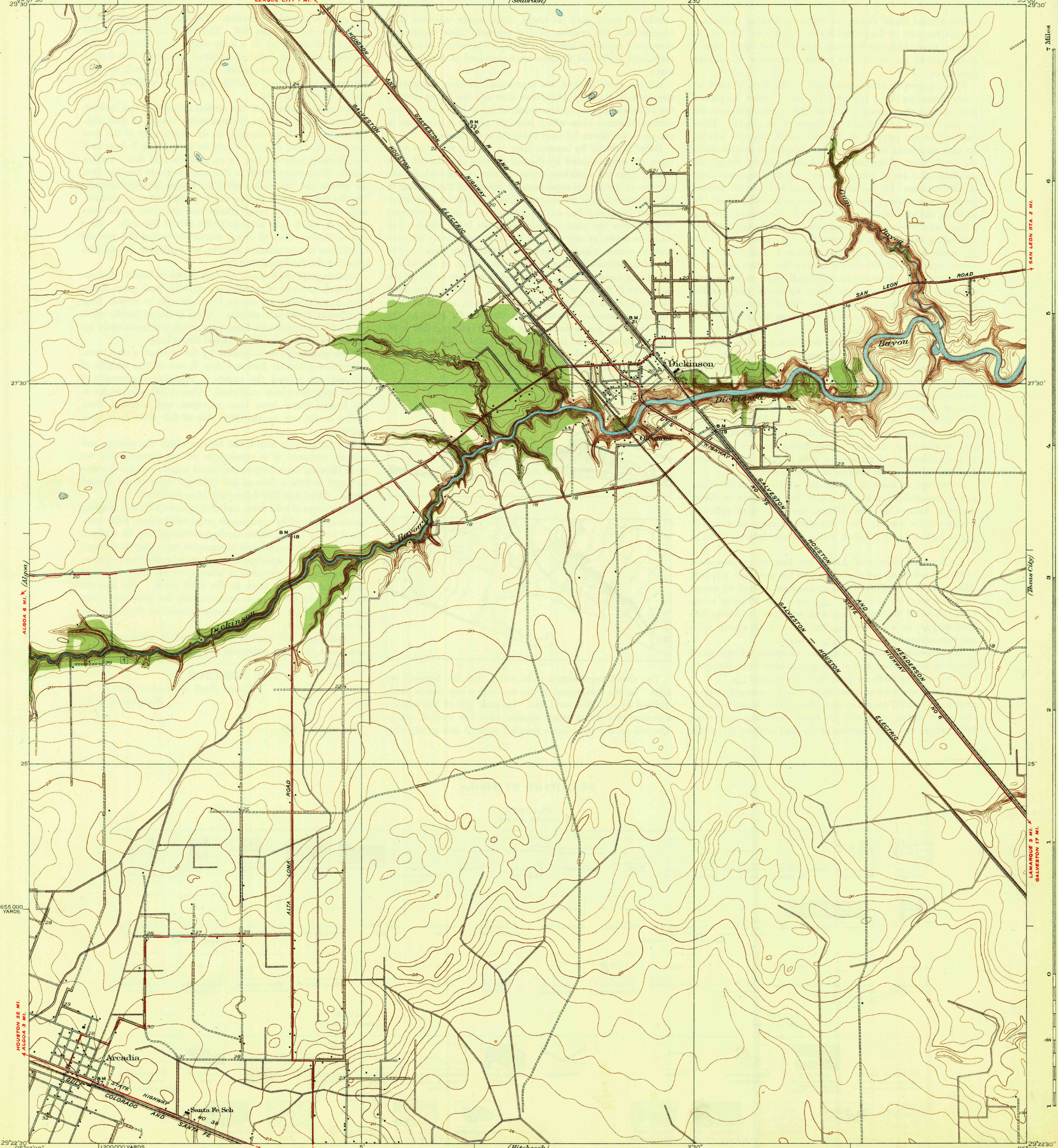
U. S. G. S.
FILE COPY
Inspection and Editing.

GALVESTON COUNTY, TEXAS
COUNTY COMMISSIONERS COURT
E. B. HOLMAN, COUNTY JUDGE
JAMES A. BODDEKER, (PRECINCT 1), HUMPHREY D. BOYD (PRECINCT 2),
GUS A. BUTTEROWE, JR. (PRECINCT 3), AND W. T. SMITH (PRECINCT 4)
C. C. WASHINGTON, COUNTY ENGINEER
(Seabrook)

U. S. G. S.
FILE COPY
Inspection and Editing.

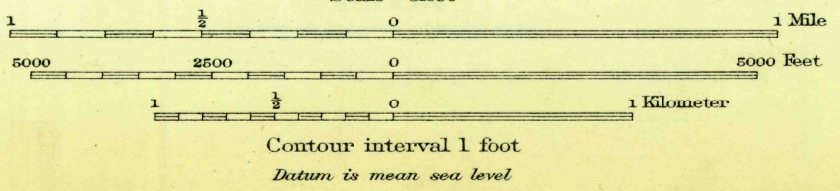
TEXAS
(GALVESTON COUNTY)
DICKINSON QUADRANGLE

DEPARTMENT OF THE INTERIOR
U. S. GEOLOGICAL SURVEY



Topography by S.T. Penick and F.K. Van Zandt
Culture and drainage in part compiled from aerial photographs
taken by Air Corps, U.S. Army
Control by U.S. Coast and Geodetic Survey and
Texas Reclamation Department
Surveyed in 1929

U. S. G. S.
FILE COPY
Inspection and Editing.



Polyconic projection, North American datum
5000 yard grid based upon U.S. zone system, D

HARD IMPERVIOUSLY SURFACED ROADS
OTHER MAIN TRAVELED ROADS
INFORMATION FURNISHED BY GALVESTON COUNTY, 1932

DICKINSON, TEX.
Edition of 1932

SEP 1 1932
Aug. 31, 1932 (1900) 2519:1575; /99; 19 00