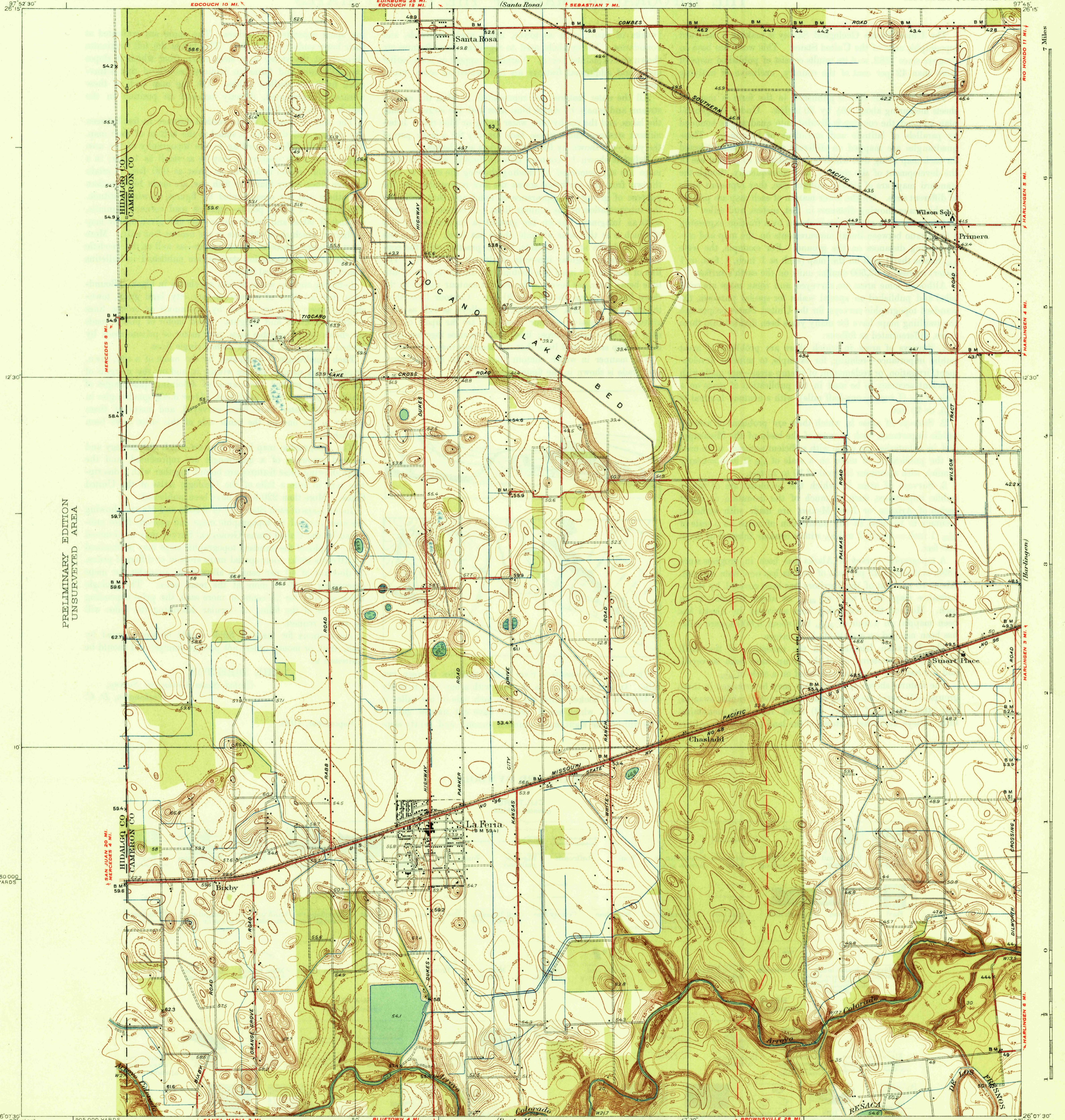
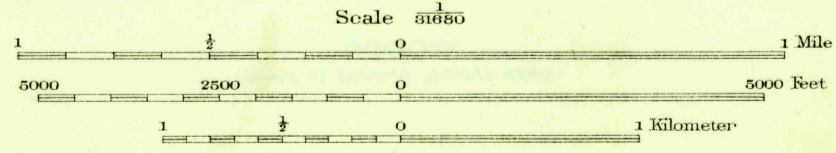


U. S. G. S.
FILE COPY
Inspection and Editing



PRELIMINARY EDITION
UNSURVEYED AREA

Topography by R. H. Reineck, R. W. Burchard,
T. F. Murphy, and J. B. Leachman
Control by U.S. Geological Survey,
U.S. Coast and Geodetic Survey, and
Texas Reclamation Department
Surveyed in 1929



U. S. G. S.
FILE COPY
Inspection and Editing

Polyconic projection. North American datum
5000 yard grid based upon U.S. zone system, D
Irrigation canals are not contoured
HARD IMPERVIOUSLY SURFACED ROADS
OTHER MAIN TRAVELED ROADS
INFORMATION FURNISHED BY CAMERON COUNTY, 1932
LA FERIA, TEX.
Edition of 1936
2509:4025/49;

APR 22 1936 (1940) 1940