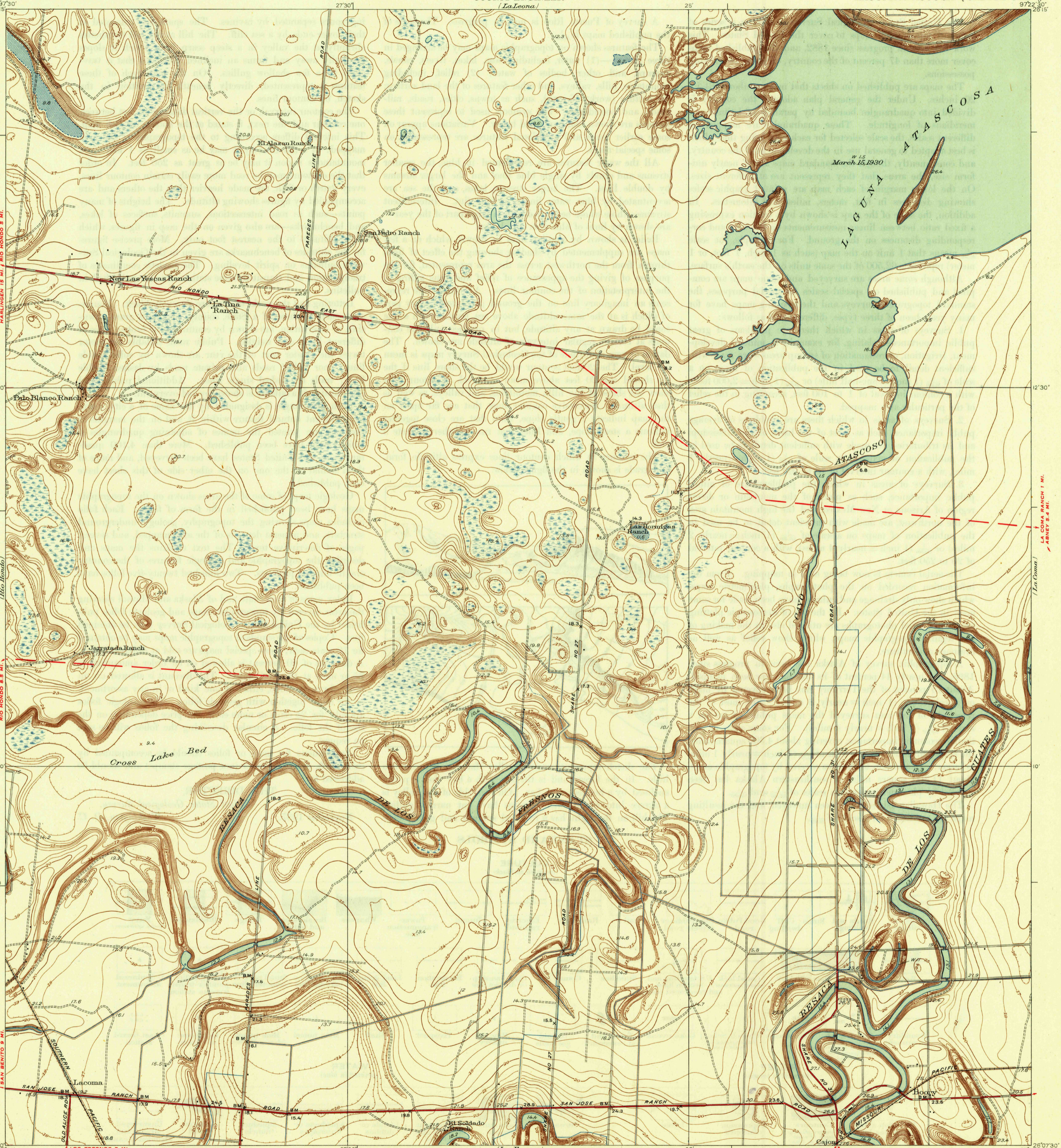


U. S. G. S.
FILE COPY
Inspection and Editing.

UNITED STATES
DEPARTMENT OF THE INTERIOR
GEOLOGICAL SURVEY

CAMERON COUNTY, TEXAS
REPRESENTED BY THE
COUNTY ENGINEER
(La Leona)

TEXAS
(CAMERON COUNTY)
LAGUNA ATASCOSA QUADRANGLE



260000 YARDS
260730
261930
263130
264330
265530
266730

261930
263130
264330
265530
266730
267930

Topography by R.W. Burchard
Culture and drainage in part compiled from aerial photographs
Surveyed in 1930

Scale 1:62500
1 Mile
500 1000 1500 2000 2500 Yards
1000 2000 3000 4000 5000 6000 7000 Feet
1 Kilometer

Contour interval 1 foot
Datum is mean sea level

APPROXIMATE MEAN
DECLINATION 1930

LOS FRESNOS 5 MI.
LOS FRESNOS 4 MI.
BROWNSVILLE 15 MI.

LOS FRESNOS 7 MI.
PORT ISABEL 14 MI.

Scale 1:62500
1 Mile
500 1000 1500 2000 2500 Yards
1000 2000 3000 4000 5000 6000 7000 Feet
1 Kilometer

Contour interval 1 foot
Datum is mean sea level

APPROXIMATE MEAN
DECLINATION 1930

LOS FRESNOS 5 MI.
LOS FRESNOS 4 MI.
BROWNSVILLE 15 MI.

LOS FRESNOS 7 MI.
PORT ISABEL 14 MI.

ROUTES USUALLY TRAVELED
HARD IMPERVIOUS SURFACES
OTHER SURFACE IMPROVEMENTS
U. S. ROUTE 1945 STATE ROUTE

Polyconic projection, North American datum
5000 yard grid based upon U.S. zone system, D
Irrigation canals are not contoured

LAGUNA ATASCOSA, TEX.
Edition of 1936
reprinted 1945
N26075-W97225/75

U. S. G. S.
FILE COPY
Inspection and Editing.

MAY 28 1945