

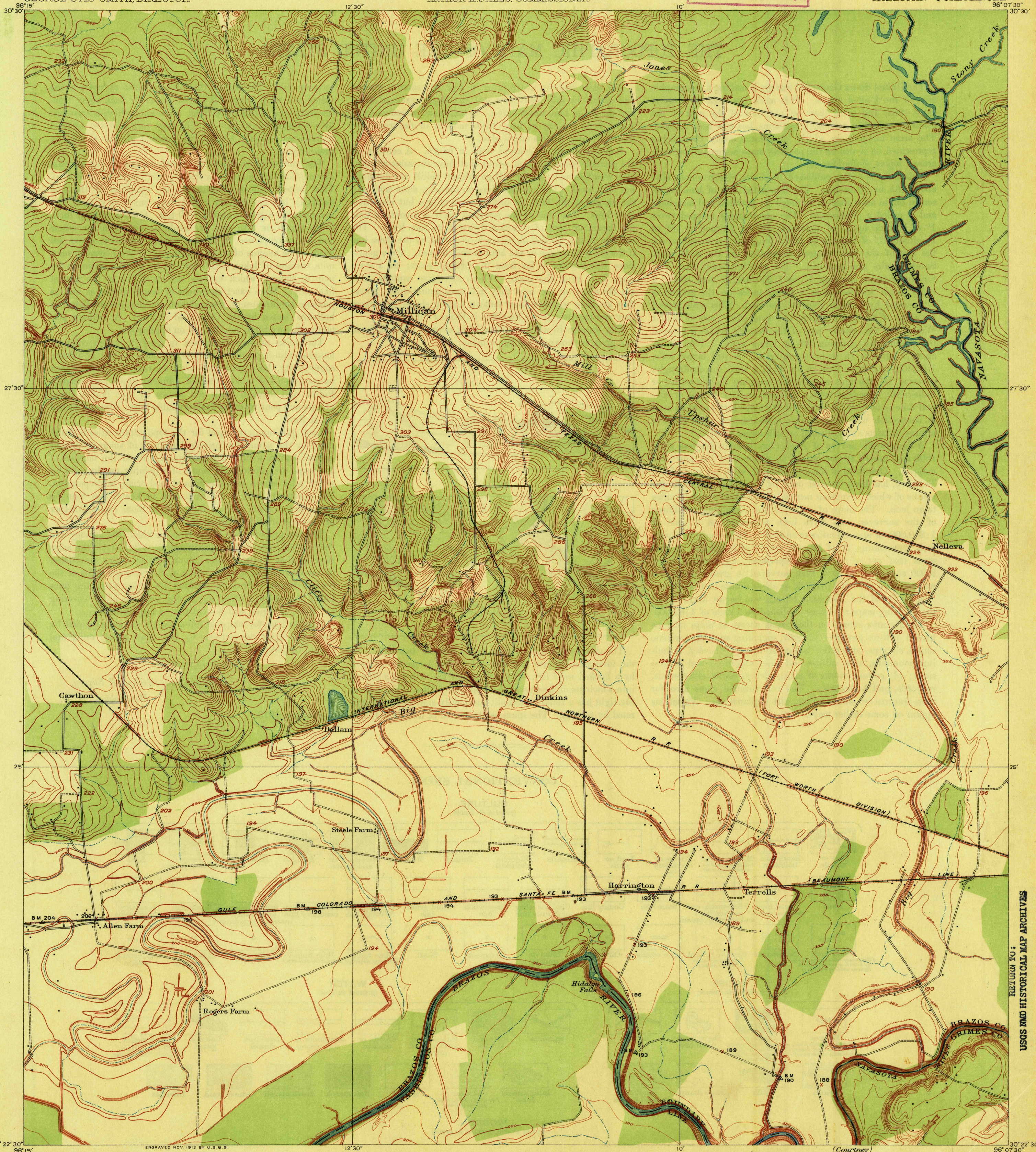
TOPOGRAPHY

STATE OF TEXAS
 T.M. CAMPBELL, GOVERNOR. LEVEE AND
 J.P. LIGHTFOOT, ATTORNEY GENERAL. DRAINAGE.
 J.T. ROBISON, LAND COMMISSIONER. BOARD
 ARTHUR A. STILES, COMMISSIONER.

U. S. G. S.
FILE COPY
 Ed. Div. Topographic Maps.

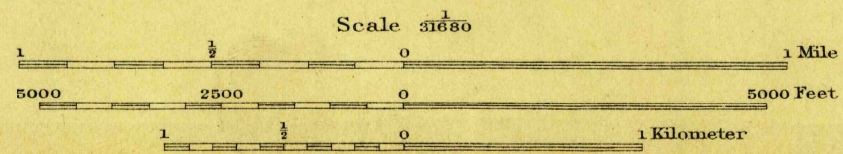
U.S. GEOLOGICAL SURVEY
 GEORGE OTIS SMITH, DIRECTOR.

TEXAS
 MILLICAN QUADRANGLE



30° 22' 30" 96° 15'
 ENGRAVED NOV. 1912 BY U.S.G.S.
 R. B. Marshall, Chief Geographer.
 E. C. Barnard, Geographer in charge.
 Topography by B. A. Jenkins and Chas. Hartmann, Jr.
 Control by F. J. McMaugh, C. H. Semper, and F. H. West.
 Surveyed in 1910.
 SURVEYED IN COOPERATION WITH THE STATE OF TEXAS.

Hartmann
Jenkins



Contour interval 5 feet.
 Datum is mean sea level.

APPROXIMATE MEAN
 MAGNETIC DECLINATION 1910.

U. S. G. S.
FILE COPY
 Ed. Div. Topographic Maps.

Edition of Feb. 1913.

JUN 30 1913
 3533
 MILLICAN
 TEXAS

RETURN TO:
 USGS AND HISTORICAL MAP ARCHIVES