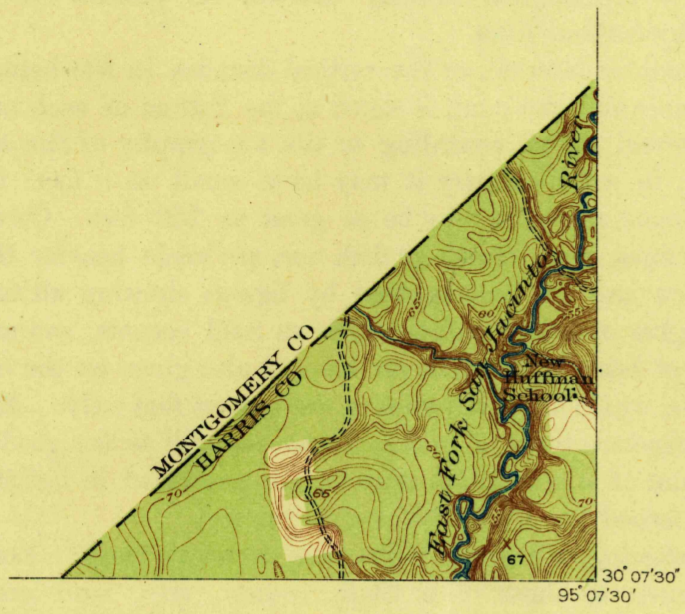


DEPARTMENT OF THE INTERIOR  
JOHN BARTON PAYNE, SECRETARY  
U.S. GEOLOGICAL SURVEY  
GEORGE OTTS SMITH, DIRECTOR

**TOPOGRAPHY**  
HARRIS COUNTY, TEXAS  
W.H. WARD, COUNTY JUDGE  
W.H. LLOYD, J.A. SMITH, W.H. KISER, D. BARKER,  
COUNTY COMMISSIONERS

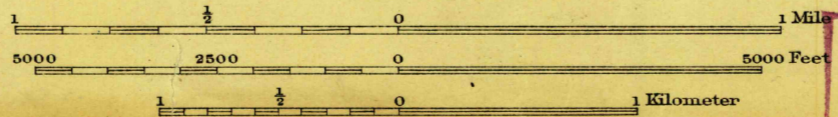
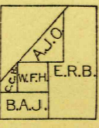
TEXAS  
(HARRIS COUNTY)  
MOONSHINE HILL QUADRANGLE



PRELIMINARY EDITION  
UNSURVEYED AREA

U. S. G. S.  
**FILE COPY**  
Inspection and Editing.

W.H. Heron, Acting Chief Geographer.  
C.H. Birdseye, Topographic Engineer in charge  
Topography by B.A. Jenkins, E.R. Bartlett,  
A.J. Ogle, C.C. Holder, and W.F. Hicks  
Control by E.L. McNair and D.S. Birkett.  
Surveyed in 1916.



Contour interval 1 foot.  
Datum is mean sea level.

U. S. G. S.  
**FILE COPY**  
Inspection and Editing.

Edition of 1920  
**FEB 28 1921 2175**

MOONSHINE HILL