

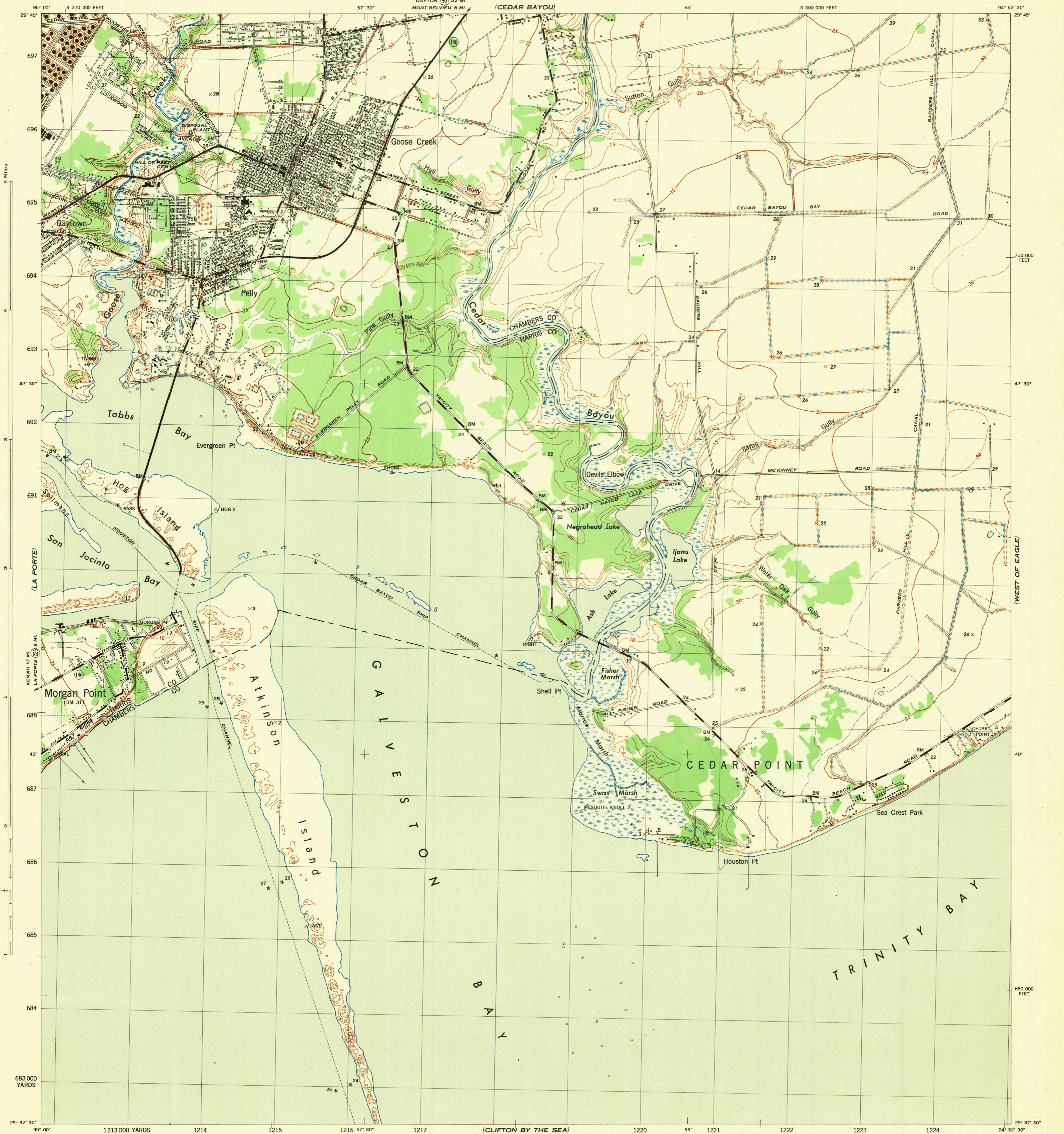
(BURNETT BAY)

TEXAS  
SCALE 1:31,680

WAR DEPARTMENT  
CORPS OF ENGINEERS, U. S. ARMY

MORGAN POINT QUADRANGLE  
7 1/2 - MINUTE SERIES

(COVE)

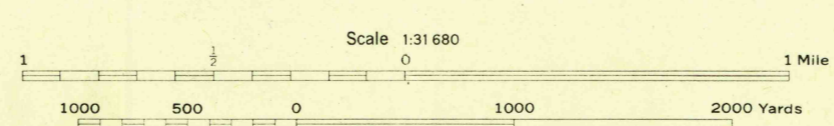


Mapped by Tennessee Valley Authority under direction of the Chief of Engineers, U. S. Army, 1943.  
Control by USCGS, USGS, TGS, Texas Reclamation Department, and TVA.  
Topography by TVA plane-table surveys, 1943.  
Contours in Harris Co. from 1916 maps of U. S. Geological Survey, revised by TVA plane-table surveys 1943.  
Culture and drainage base by multiplex, 1943.  
Wide-angle photography for TVA, 1942.  
Polyconic projection. 1927 North American datum.

**ROAD CLASSIFICATION**  
1943

Dependable hard-surface, heavy-duty road. U. S. Route (37)  
Secondary, hard-surface, all-weather road. State Route (154)  
Dirt road. 3 LANE 4 LANE  
More than two lanes indicated by note along road with tick at point of change.

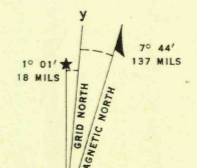
THIS MAP COMPLIES WITH THE NATIONAL STANDARD MAP ACCURACY REQUIREMENTS.



CONTOUR INTERVAL 5 FEET  
DATUM IS MEAN SEA LEVEL

ONE THOUSAND YARD GRID COMPUTED FROM "GRID SYSTEM FOR PROGRESSIVE MAPS IN THE U. S." ZONE D, U. S. C. & G. S. SPECIAL PUBLICATION NO. 59  
THE LAST THREE DIGITS OF THE GRID NUMBERS ARE OMITTED  
TEN THOUSAND FOOT GRID BASED ON TEXAS PLANE COORDINATE SYSTEM, SOUTH CENTRAL ZONE  
NOTE: OFFICERS USING THIS MAP WILL MAKE FREQUENT CORRECTIONS AND ADJUSTMENTS WHICH COME TO THEIR ATTENTION AND WILL DIRECT TO "THE CHIEF OF ENGINEERS, WASHINGTON, D. C."

U. S. G. S.  
FILE COPY  
Inspection and Editing



REPRODUCED BY THE TENNESSEE VALLEY AUTHORITY  
ANS NO. 121377

MORGAN POINT, TEX.  
N2937.5-W9452.5/7.5  
EDITION OF 1943

(SEABROOK)

(SMITH POINT)