

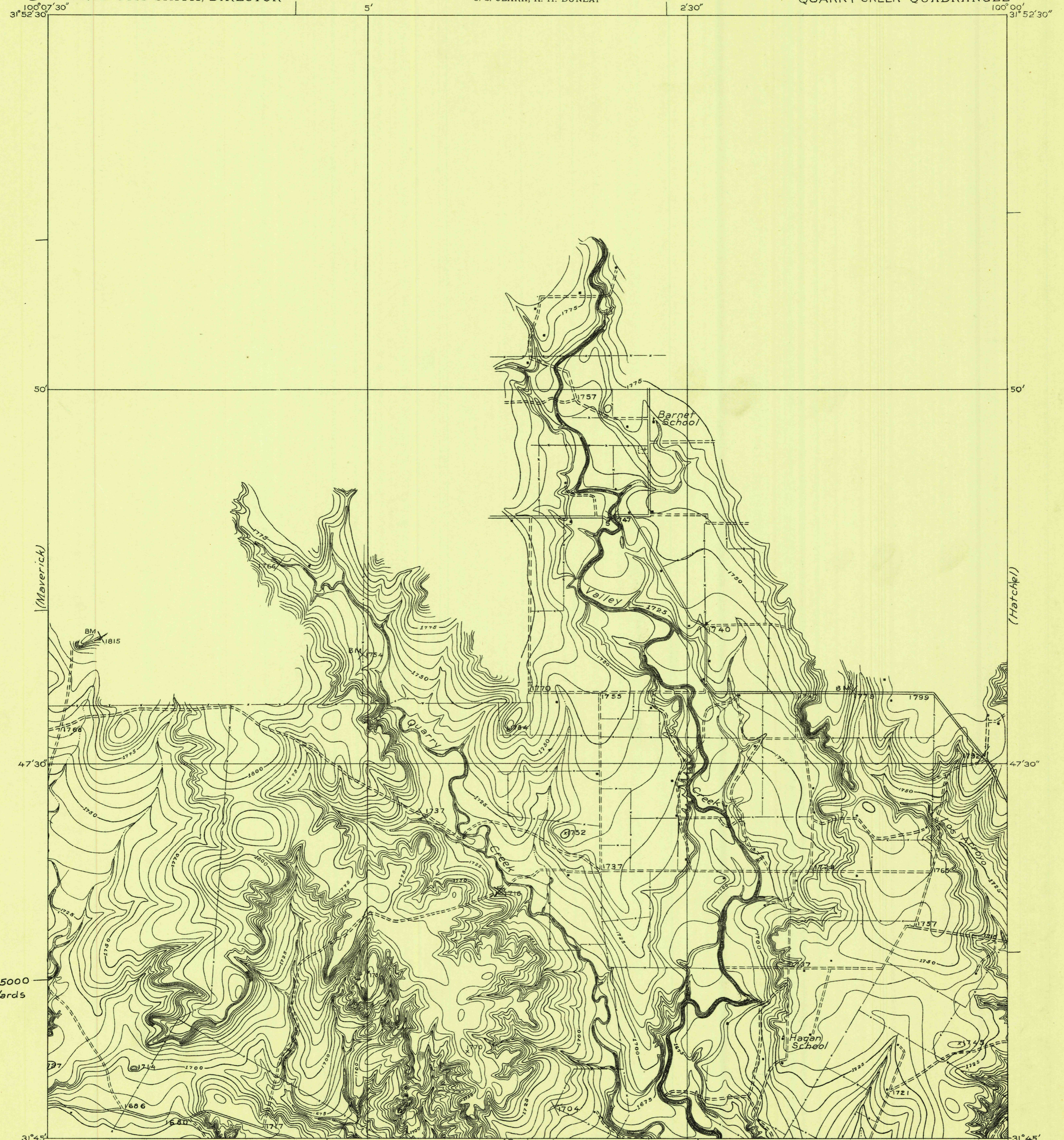
421-N1E/2-SE/4
TOPOGRAPHY

STATE OF TEXAS
BOARD OF WATER ENGINEERS
JOHN A. NORRIS, CHAIRMAN
C. S. CLARK, A. H. DUNLAP

Advance sheet.
Subject to correction.

TEXAS
RUNNELS COUNTY
QUARRY CREEK QUADRANGLE

DEPARTMENT OF THE INTERIOR
ALBERT B. FALL, SECRETARY
U. S. GEOLOGICAL SURVEY
GEORGE OTIS SMITH, DIRECTOR

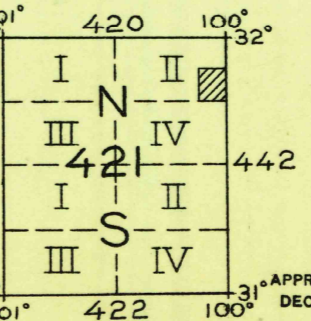
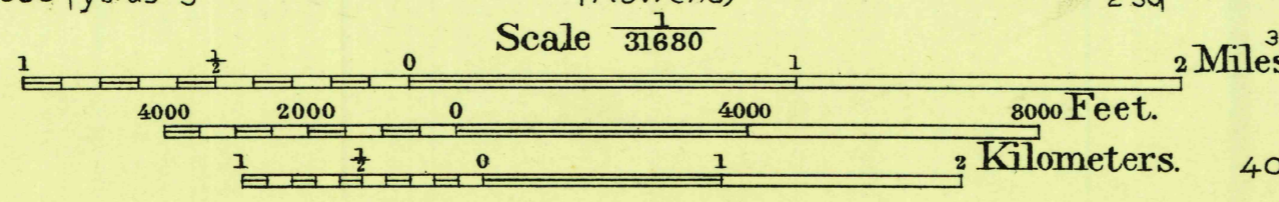


94500
Yards

(Baker Flat)

(Spur Creek)

C. H. Birdseye, Chief Topographic Engineer.
T. G. Gerdine, Division Topographic Engineer.
Topography by C.C. Holder.
Control by C.F. Urquhart, C.E. Fulmer and A.K. Andrews
Surveyed in 1921



Polyconic projection. To place on North American datum move projection lines 160 feet north and 120 feet east.
5000 yard grid based upon U. S. zone system, D.

TRUE NORTH
MAGNETIC NORTH
APPROXIMATE MEAN DECLINATION 1921

SURVEYED IN COOPERATION WITH THE STATE OF TEXAS

QUARRY CREEK