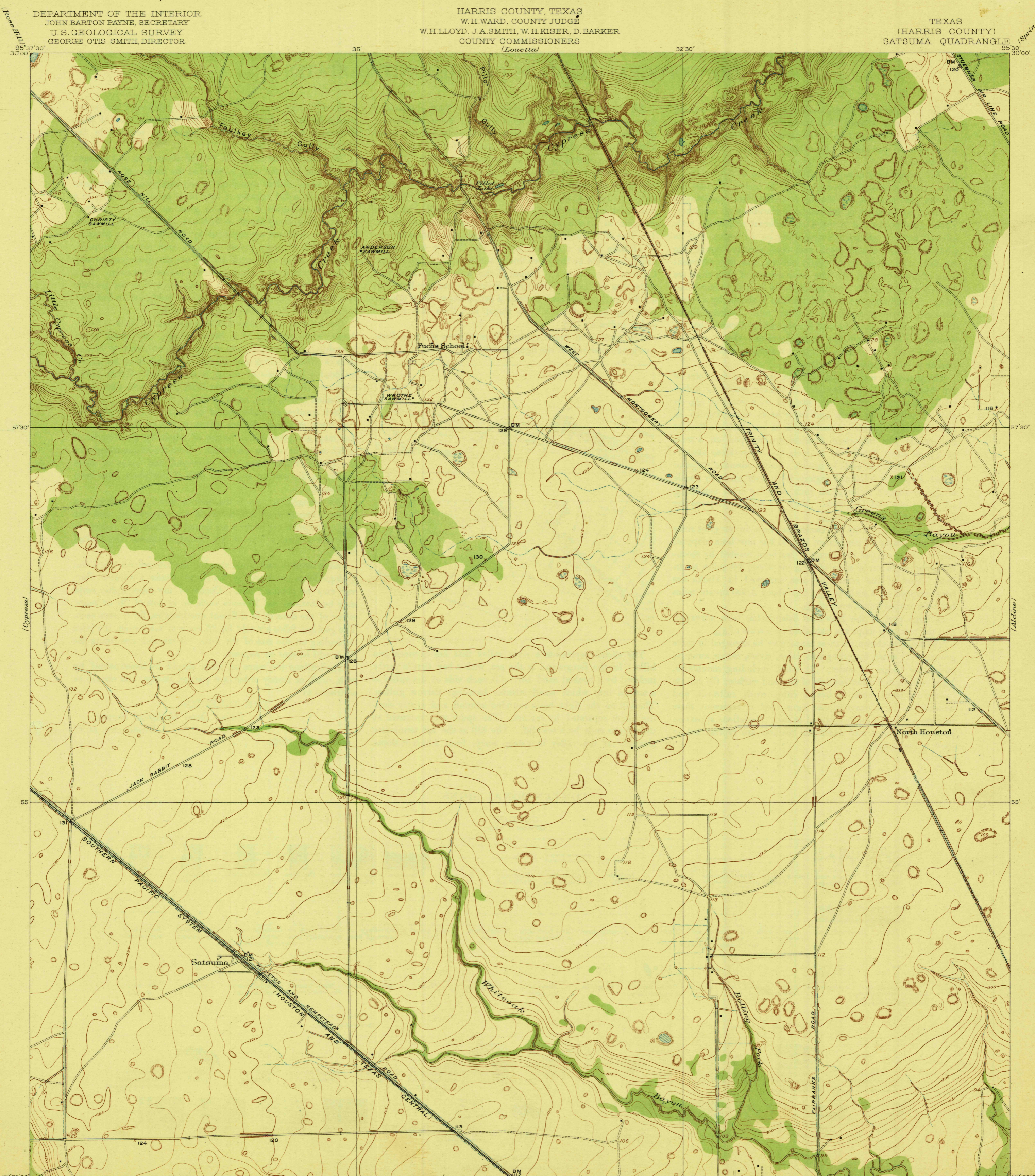


TOPOGRAPHY

DEPARTMENT OF THE INTERIOR
JOHN BARTON PAYNE, SECRETARY
U. S. GEOLOGICAL SURVEY
GEORGE OTIS SMITH, DIRECTOR

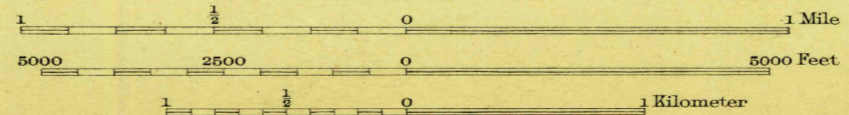
HARRIS COUNTY, TEXAS
W. H. WARD, COUNTY JUDGE
W. H. LLOYD, J. A. SMITH, W. H. KISER, D. BARKER,
COUNTY COMMISSIONERS
(Louetta)

TEXAS
(HARRIS COUNTY)
SATSUMA QUADRANGLE



W. H. Herron, Acting Chief Geographer.
C. H. Birdseye, Topographic Engineer in charge.
Topography by F. A. Danforth and D. H. Watson.
Control by E. L. McNair and R. R. Monbeck.
Surveyed in 1916.

Watson
Danforth



Contour interval 1 foot.
Datum is mean sea level.

U. S. G.
FILE COPY
Inspection and Editing.

Edition of 1920.
MAR 15 1921 2120

SATSUMA, TEX.