

Quarry Creek  
100 00'  
31° 45'

DEPARTMENT OF THE INTERIOR  
ALBERT B. FALL, SECRETARY  
U. S. GEOLOGICAL SURVEY  
GEORGE OTIS SMITH, DIRECTOR

442-N-III-W2-NW/4  
**TOPOGRAPHY**  
STATE OF TEXAS  
BOARD OF WATER ENGINEERS  
JOHN A. NORRIS, CHAIRMAN  
C. S. CLARK, A. H. DUNLAP  
(Hatchel)

Advance sheet.  
Subject to correction.

TEXAS  
(RUNNELS COUNTY)  
SPUR CREEK QUADRANGLE

99° 52' 30"  
31° 45'

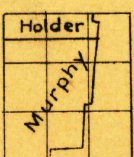


930 000  
yards

31° 37' 30"  
100° 00'  
(Lowake)

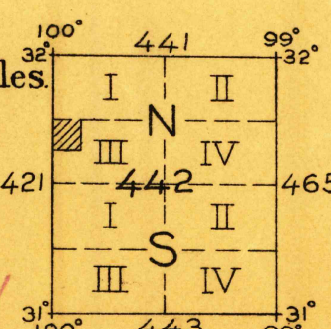
C. H. Birdseye, Chief Topographic Engineer.  
T. G. Gerdine, Division Topographic Engineer.  
Topography by C.C. Holder and T.F. Murphy.  
Control by C.F. Urquhart and C.E. Fulmer.  
Surveyed in 1921.

SURVEYED IN COOPERATION WITH THE STATE OF TEXAS



Contour interval 5 feet.  
Datum is mean sea level.

FILE COPY



Polyconic projection. To place on North American datum move projection lines 240 feet north and 190 feet east.  
5000 yard grid based upon U. S. zone system, D  
APPROXIMATE MEAN DECLINATION 1921

SPUR CREEK

Board of Surveys & Maps  
Information Office  
FILE COPY

RETURN TO:  
USGS AND HISTORICAL MAP ARCHIVES