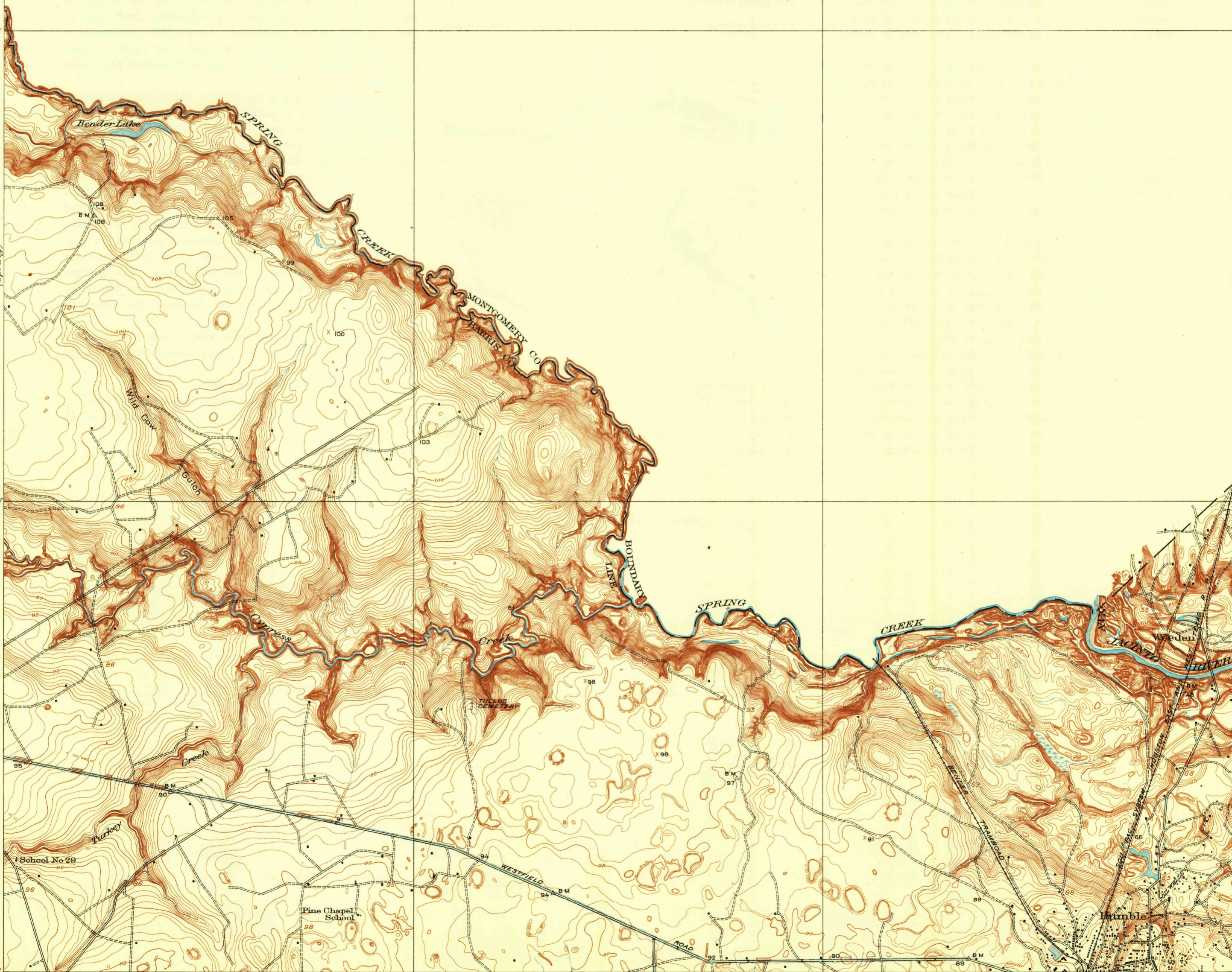


U. S. G. S.
FILE COPY
Inspection and Editing.

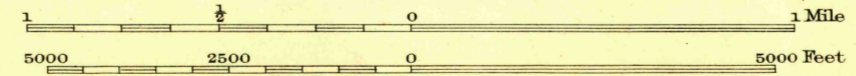
PRELIMINARY EDITION
UNSURVEYED AREA



W.H.Herron, Acting Chief Geographer.
C.H.Birdseye, Topographic Engineer in charge.
Topography by H.W.Peabody and Cornelius Schnurr.
Control by E.L.McNair and D.S.Birkett.
Surveyed in 1916.

SURVEYED IN COOPERATION WITH HARRIS COUNTY.

U. S. G. S.
FILE COPY
Inspection and Editing.



Contour interval 1 foot.
Datum is mean sea level.

TRUE NORTH
MAGNETIC NORTH
APPROXIMATE MEAN
DECLINATION, 1916.

Edition of 1919, reprinted 1932.
Polyconic projection, North American datum.

AUG 10 1932 (2520) WEEDEN, TEX.

(Moonshine Hill)

(Harrington)