

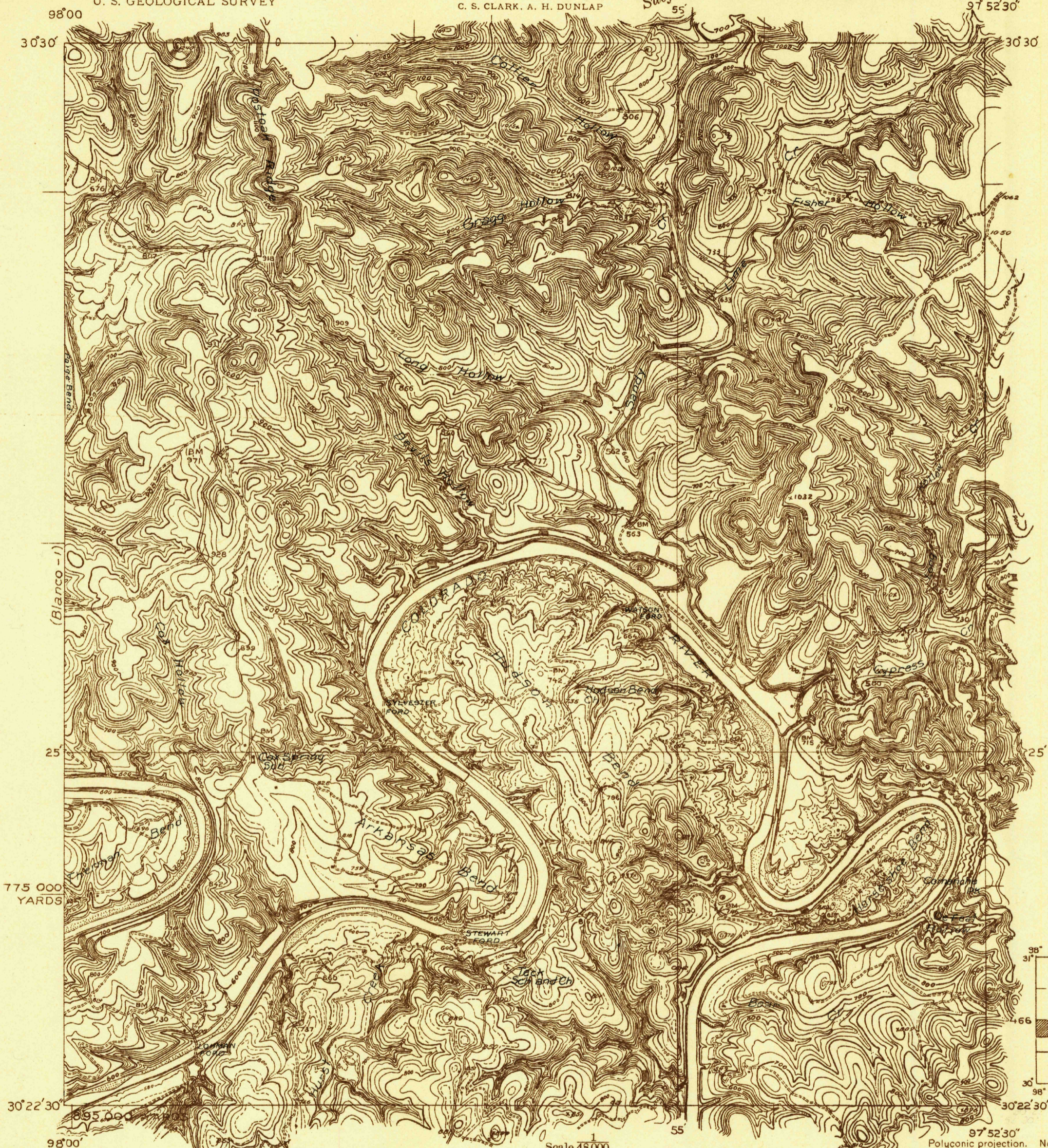
U. S. G. S.
FILE COPY
Inspection and Editing.

DEPARTMENT OF THE INTERIOR
U. S. GEOLOGICAL SURVEY

489-S-1-W/2-NW/4
STATE OF TEXAS
BOARD OF WATER ENGINEERS
JOHN A. NORRIS, CHAIRMAN
C. S. CLARK, A. H. DUNLAP

Advance sheet
Subject to correction

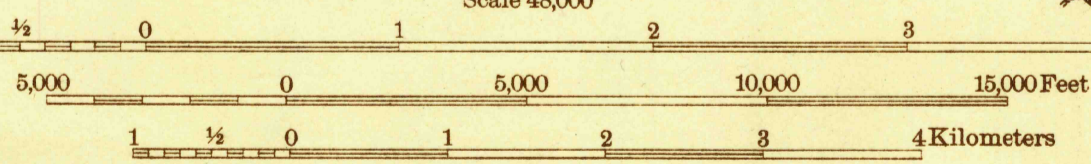
TEXAS
(TRAVIS COUNTY)
AUSTIN 2 QUADRANGLE



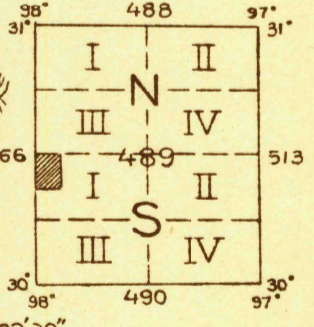
775 000
YARDS

TRUE NORTH
MAGNETIC NORTH
APPROXIMATE MEAN
DECLINATION, 1930

Glenn S Smith, Division Engineer
Topography by S. B. O'Hara,
J. B. Leachman and S. S. Evans
Culture and drainage in part compiled from aerial photographs
taken by Air Corps, U. S. Army
Control by U. S. Geological Survey
Surveyed in 1930



Contour interval 20 feet
10 foot contours added in dashed lines
Datum is mean sea level



97° 52' 30"
Polyconic projection. North American datum
5000 yard grid based upon U. S. zone system. D

AUSTIN-2, TEX.
RETURN TO:
USGS NHD HISTORICAL MAP ARCHIVES

FILE COPY

MAP INFORMATION OFFICE
GEOLOGICAL SURVEY

(Keep)
(PUB AS MT BONNELL 15' partial
but suppl. contours dropped)

U. S. G. S.
FILE COPY
Inspection and Editing.