

(Graham 4-c)

464-N-1-E/2-NE/4

Advance sheet  
Subject to correction

DEPARTMENT OF THE INTERIOR  
U. S. GEOLOGICAL SURVEY

STATE OF TEXAS  
BOARD OF WATER ENGINEERS  
JOHN A. NORRIS, CHAIRMAN  
C. S. CLARK, A. H. DUNLAP  
(Graham 4-d)

TEXAS  
BRECKENRIDGE I-a QUADRANGLE

98° 37' 30"  
33° 00'

35'

98° 30'  
33° 00'



(Breckenridge 1-b)

(Palo Pinto 2-b)

1080000  
YARDS

55'

55'

32° 52' 30"  
98° 37' 30"

835 000 YARDS

35'

(Breckenridge 1-d)

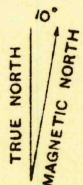
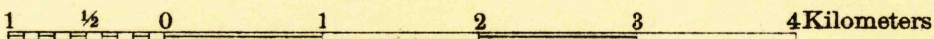
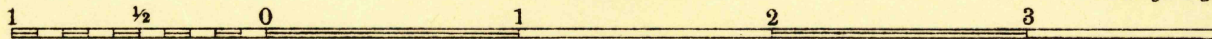
32° 52' 30"  
98° 30'

(Palo Pinto 2-c)

Topography by Max J. Gleissner  
Surveyed in 1924

Scale 48,000

Polyconic projection. North American datum  
5000 yard grid based upon U. S. zone system, D

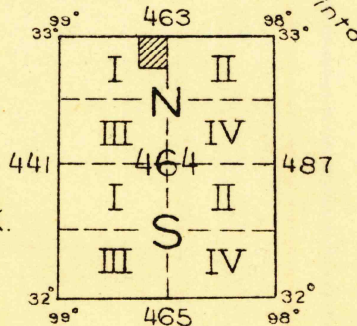


APPROXIMATE MEAN  
DECLINATION, 1924

Culture and drainage in part from aerial photographs  
from Air Service, U. S. Army

Contour interval 20 feet  
10 foot contours in dashed lines  
Datum is mean sea level

BRECKENRIDGE I-a, TEX.



RETURN TO:  
USGS NMD HISTORICAL MAP ARCHIVES

FILE COPY  
MAP INFORMATION OFFICE

Published as part of Ivan 15' partial quad.