

DEPARTMENT OF THE INTERIOR
U. S. GEOLOGICAL SURVEY

464-N-1-E/2-NW/4
STATE OF TEXAS
BOARD OF WATER ENGINEERS
JOHN A. NORRIS, CHAIRMAN
C. S. CLARK, A. H. DUNLAP

Advance sheet
Subject to correction

TEXAS
BRECKENRIDGE 1-b QUADRANGLE



Topography by G.E. Sisson
Culture and drainage in part from aerial photographs
from Air Service, U. S. Army
Surveyed in 1925

Scale 1/48,000

0 1 2 3 4 Miles

5,000 0 5,000 10,000 15,000 Feet

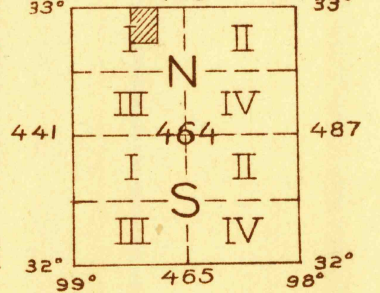
1 1/2 0 1 2 3 4 Kilometers

Contour interval 20 feet

Datum is mean sea level

BRECKENRIDGE 1-b TEX

Polyconic projection. North American datum
5000 yard grid based upon U. S. zone system, D



APPROXIMATE MEAN
DECLINATION, 1925

TRUE NORTH
MAGNETIC NORTH

FILE COPY
MAP INFORMATION OFFICE

RETURN TO:
USGS NHD HISTORICAL MAP ARCHIVES

Published as part of Ivan 15' partial and