

# TOPOGRAPHIC FILES

RETAINED COPY

This sheet must not be taken from the files without an order from the Chief Topographic Engineer.

JUL 10 1925

465-N-111-W/2-NW/4  
STATE OF TEXAS  
BOARD OF WATER ENGINEERS  
JOHN A. NORRIS, CHAIRMAN  
C. S. CLARK, A. H. DUNLAP

Advance sheet  
Subject to correction

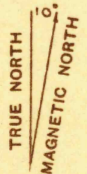
DEPARTMENT OF THE INTERIOR  
U. S. GEOLOGICAL SURVEY

TEXAS  
(BROWN COUNTY)  
55' BROWNWOOD 3-b QUADRANGLE

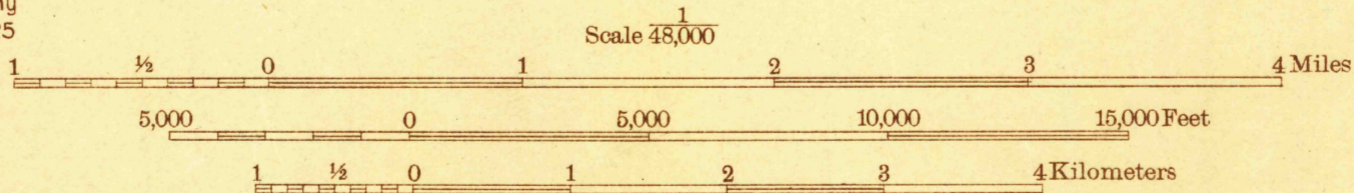


Topography by A.J. Ogle  
Culture and drainage in part from aerial photographs  
from Air Service, U. S. Army  
Surveyed in 1924 and 1925

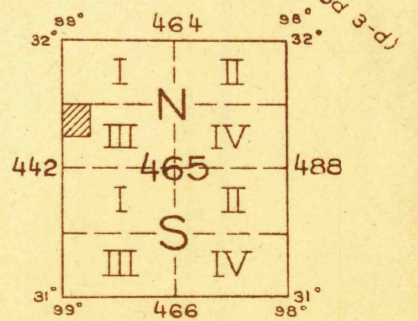
Polyconic projection. North American datum  
5000 yard grid based upon U. S. zone system, D



APPROXIMATE MEAN  
DECLINATION, 1925



Contour interval 20 feet  
Datum is mean sea level



BROWNWOOD 3-b, TEX.

RETURN TO:  
USGS NHD HISTORICAL MAP ARCHIVES

FILE COPY  
MAP INFORMATION OFFICE