

U. S. G. S.
FILE COPY
Inspection and Editing.

RETAINED COPY

This sheet must not be taken from
the files without an order from the
Chief Topographic Engineer.

TOPOGRAPHIC FILES

JUL 20 1925

Advance sheet
Subject to correction

465-N-111-W/2-SE/4
STATE OF TEXAS
BOARD OF WATER ENGINEERS
JOHN A. NORRIS, CHAIRMAN
C. S. CLARK, A. H. DUNLAP

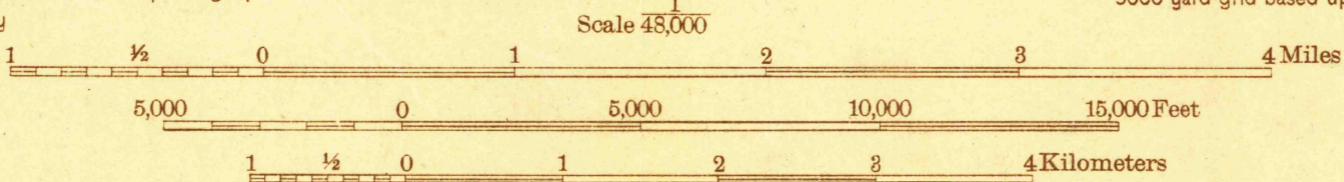
TEXAS
BROWNWOOD 3-d QUADRANGLE

DEPARTMENT OF THE INTERIOR
U. S. GEOLOGICAL SURVEY



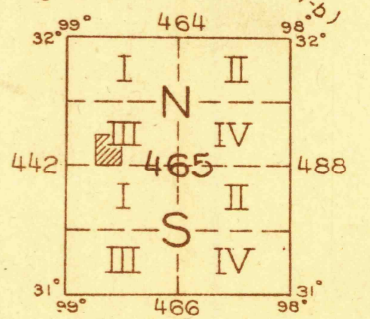
Topography by W.F. Chenault
Culture and drainage in part from aerial photographs
from Air Service, U. S. Army
Surveyed in 1925

Polyconic projection. North American datum
5000 yard grid based upon U. S. zone system, D



TRUE NORTH
MAGNETIC NORTH
APPROXIMATE MEAN
DECLINATION, 1925

Contour interval 20 feet
10 foot contours in dashed lines
Datum is mean sea level



BROWNWOOD 3-d, TEX.

RETURN TO:
USGS NMD HISTORICAL MAP ARCHIVES

U. S. G. S.
FILE COPY
Inspection and Editing.