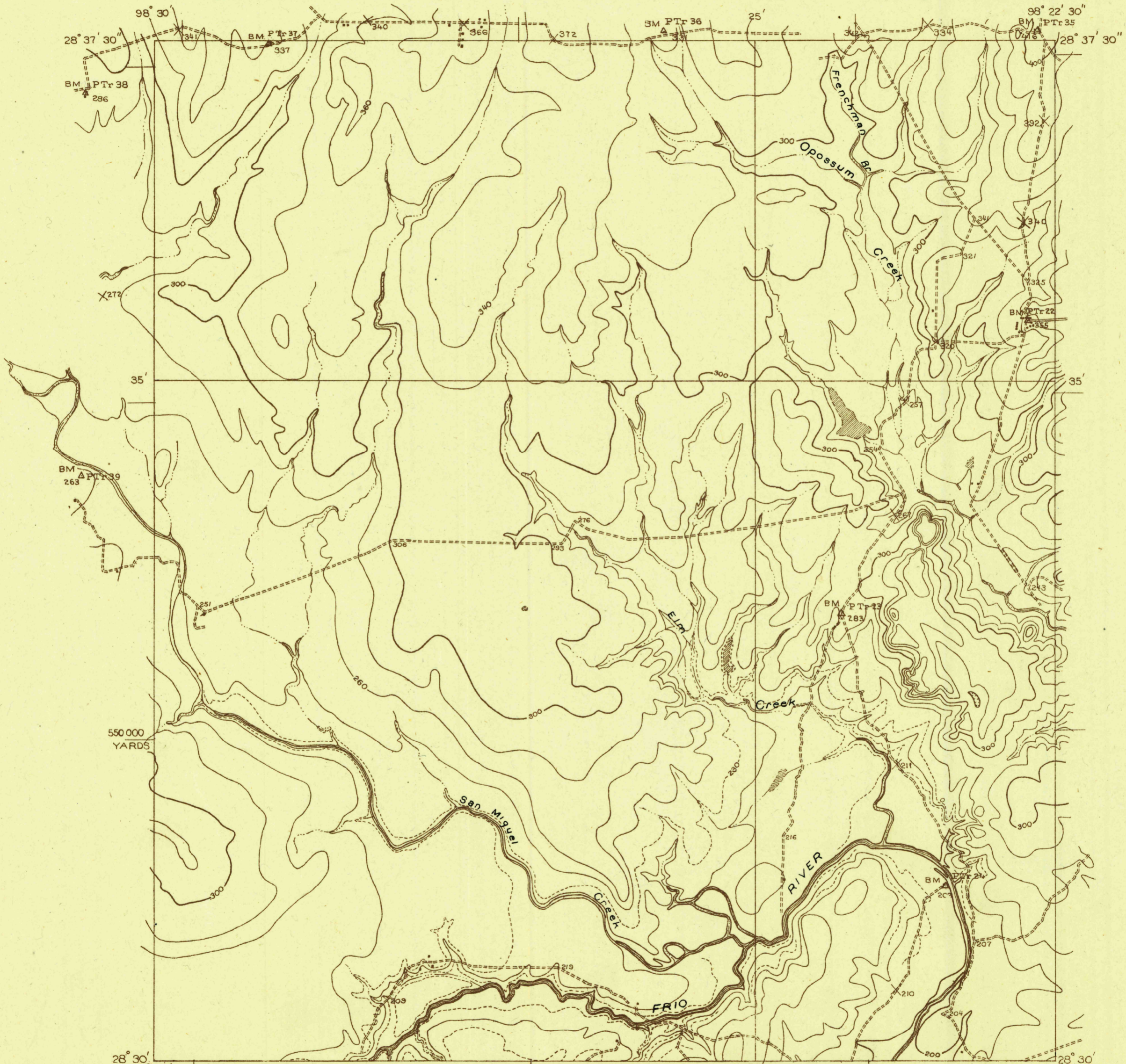


DEPARTMENT OF THE INTERIOR  
U. S. GEOLOGICAL SURVEY

468-N-IV-W/2-SW/4  
STATE OF TEXAS  
BOARD OF WATER ENGINEERS  
JOHN A. NORRIS, CHAIRMAN  
C. S. CLARK, A. H. DUNLAP

Advance sheet  
Subject to correction

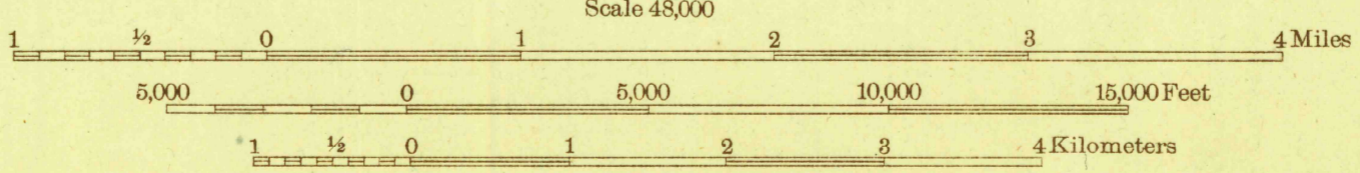
TEXAS  
(McMULLEN COUNTY)  
CROWTHER NO 3 QUADRANGLE



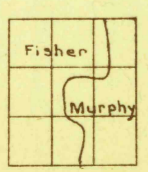
Topography by T.F. Murphy and W.A. Fisher  
Culture and drainage in part from aerial photographs  
from Air Service, U. S. Army  
Surveyed in 1925

(Simmons No 2)

Polyconic projection. North American datum  
5000 yard grid based upon U. S. zone system, D

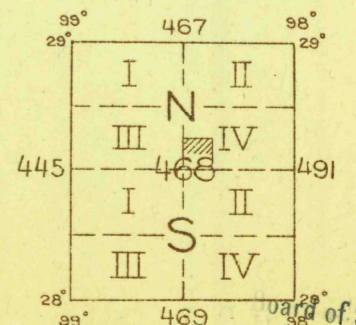


Contour interval 20 feet  
10 foot contours in dashed lines  
Datum is mean sea level



TRUE NORTH  
MAGNETIC NORTH  
APPROXIMATE MEAN  
DECLINATION, 1925

CROWTHER NO. 3, TEX



BOARD OF SURVEYS & MAPS  
RECEIVED  
AUG 17 1926  
Map Information Office

Board of Surveys & Maps  
FILE COPY  
Map Information Office

Published as Whitsett partial quad (but keep for suppl 10' contours)

RETURN TO:  
USGS AND HISTORICAL MAP ARCHIVES